

OAKS PRESERVE PHASES III & IV, A CLUSTER SUBDIVISION

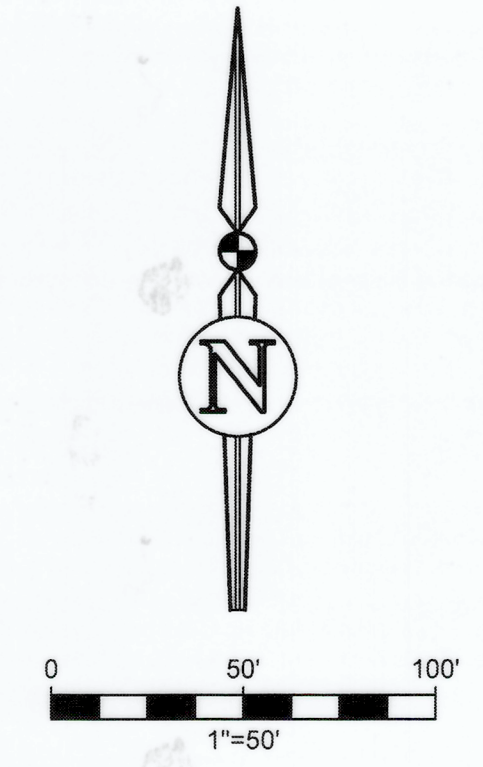
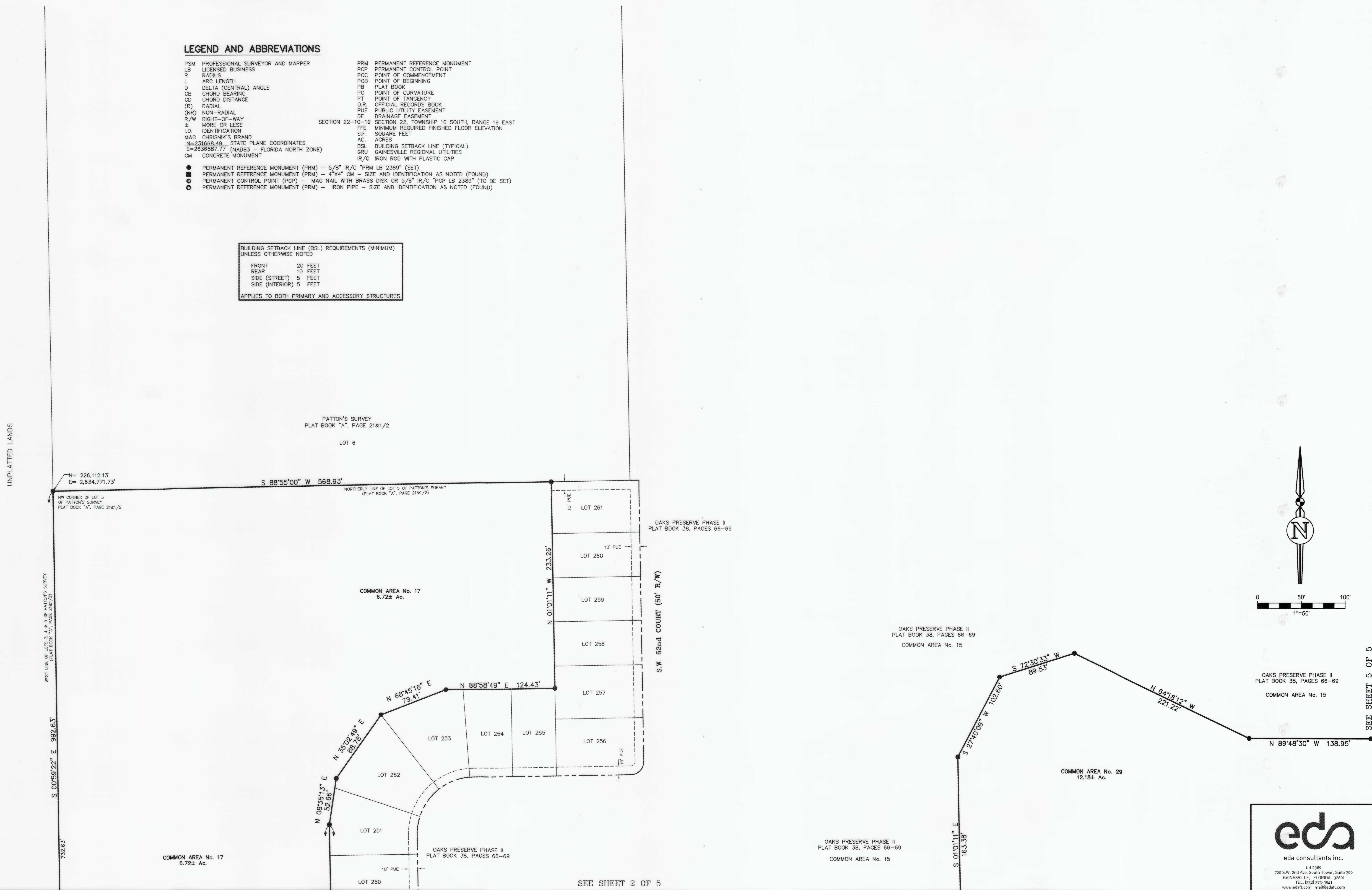
PLAT BOOK ____, PAGE ____
SHEET 4 OF 5

SITUATED IN SECTION 22, TOWNSHIP 10 SOUTH, RANGE 19 EAST, CITY OF GAINESVILLE, ALACHUA COUNTY, FLORIDA, A PORTION THEREOF BEING A REPLAT OF A PORTION OF LOTS 1, 3, 4 & 5 OF PATTON'S SURVEY, PLAT BOOK "A", PAGE 21&1/2, OF THE PUBLIC RECORDS OF ALACHUA COUNTY, FLORIDA


LEGEND AND ABBREVIATIONS

- | | |
|--|---|
| PSM PROFESSIONAL SURVEYOR AND MAPPER | PRM PERMANENT REFERENCE MONUMENT |
| LB LICENSED BUSINESS | PCP PERMANENT CONTROL POINT |
| R RADIUS | POC POINT OF COMMENCEMENT |
| L ARC LENGTH | POB POINT OF BEGINNING |
| D DELTA (CENTRAL) ANGLE | PB PLAT BOOK |
| CB CHORD BEARING | PC POINT OF CURVATURE |
| CD CHORD DISTANCE | PT POINT OF TANGENCY |
| (R) RADIAL | O.R. OFFICIAL RECORDS BOOK |
| (NR) NON-RADIAL | PUE PUBLIC UTILITY EASEMENT |
| R/W RIGHT-OF-WAY | DE DRAINAGE EASEMENT |
| ± MORE OR LESS | SECTION 22-10-19 SECTION 22, TOWNSHIP 10 SOUTH, RANGE 19 EAST |
| I.D. IDENTIFICATION | FFE MINIMUM REQUIRED FINISHED FLOOR ELEVATION |
| MAG CHRISNIK'S BRAND | S.F. SQUARE FEET |
| N=231688.49 STATE PLANE COORDINATES | AC. ACRES |
| E=263688.77 (NAD83 - FLORIDA NORTH ZONE) | B.S.L. BUILDING SETBACK LINE (TYPICAL) |
| CM CONCRETE MONUMENT | GRU GAINESVILLE REGIONAL UTILITIES |
| | IR/C IRON ROD WITH PLASTIC CAP |
-
- PERMANENT REFERENCE MONUMENT (PRM) - 5/8" IR/C "PRM LB 2389" (SET)
 - PERMANENT REFERENCE MONUMENT (PRM) - 4"x4" CM - SIZE AND IDENTIFICATION AS NOTED (FOUND)
 - PERMANENT CONTROL POINT (PCP) - MAG NAIL WITH BRASS DISK OR 5/8" IR/C "PCP LB 2389" (TO BE SET)
 - PERMANENT REFERENCE MONUMENT (PRM) - IRON PIPE - SIZE AND IDENTIFICATION AS NOTED (FOUND)

BUILDING SETBACK LINE (BSL) REQUIREMENTS (MINIMUM) UNLESS OTHERWISE NOTED	
FRONT	20 FEET
REAR	10 FEET
SIDE (STREET)	5 FEET
SIDE (INTERIOR)	5 FEET
APPLIES TO BOTH PRIMARY AND ACCESSORY STRUCTURES	



OAKS PRESERVE PHASE II
PLAT BOOK 38, PAGES 66-69
COMMON AREA No. 15



eda consultants inc.
 LB 2389
 728 S.W. 2nd Ave., South Tower, Suite 300
 GAINESVILLE, FLORIDA 32609
 TEL: (352) 373-2641
 www.edafl.com email: edafl.com

Plotted Mar. 25, 2024 - 13:07:21 - alocnie

SEE SHEET 5 OF 5

SEE SHEET 2 OF 5