

# City of **Gainesville**



## **Wild Spaces & Public Places**

**Betsy Waite, P.E. | Wild Spaces & Public Places Director**



# Agenda



**Proposed Master Plan**



**Phase I Improvements  
and Cost Estimates**



**Next Steps**







**City Hall Plaza Ponds – Rocks circa early 2000s**



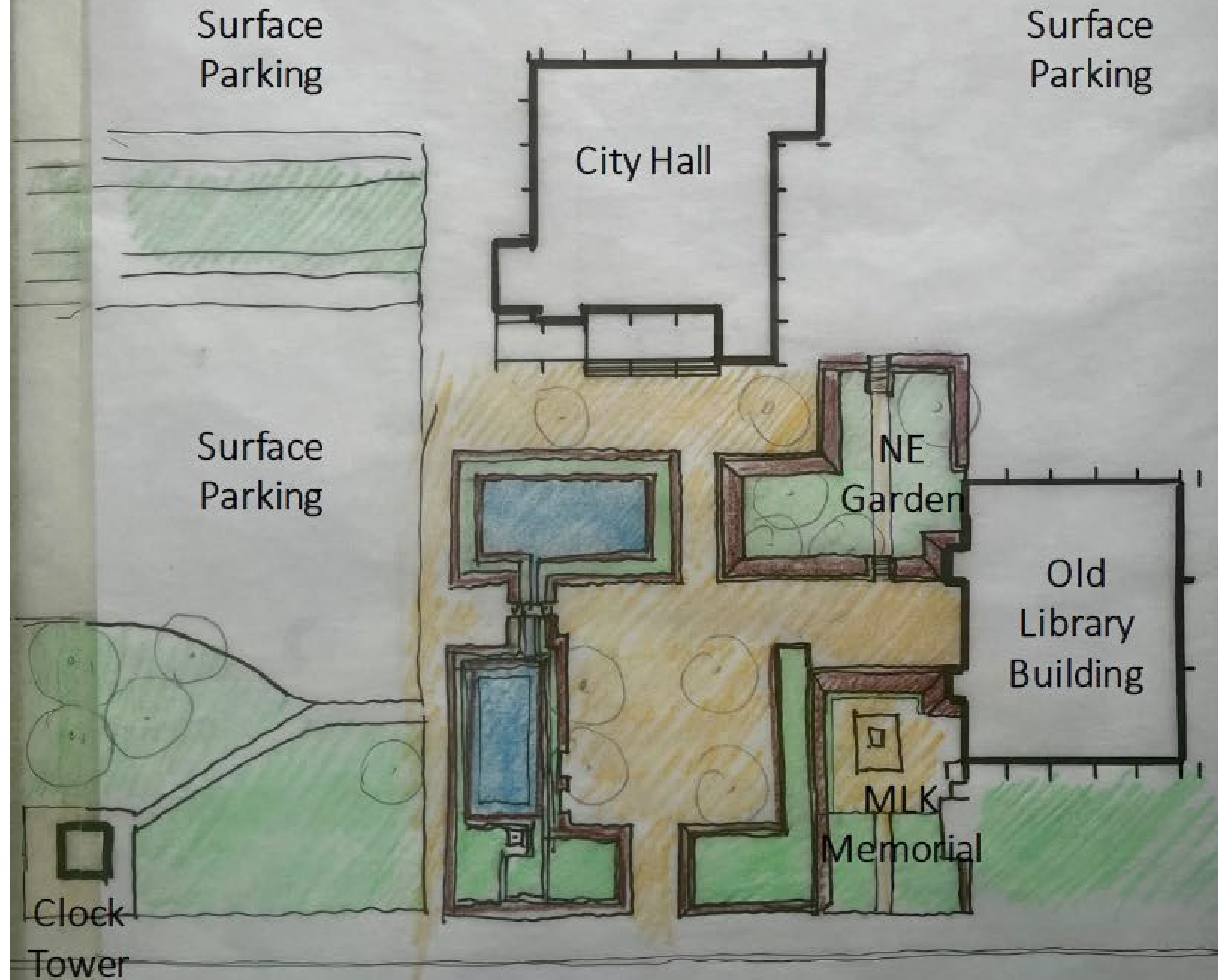


**City Hall Plaza Ponds – 2019**



# Current Layout

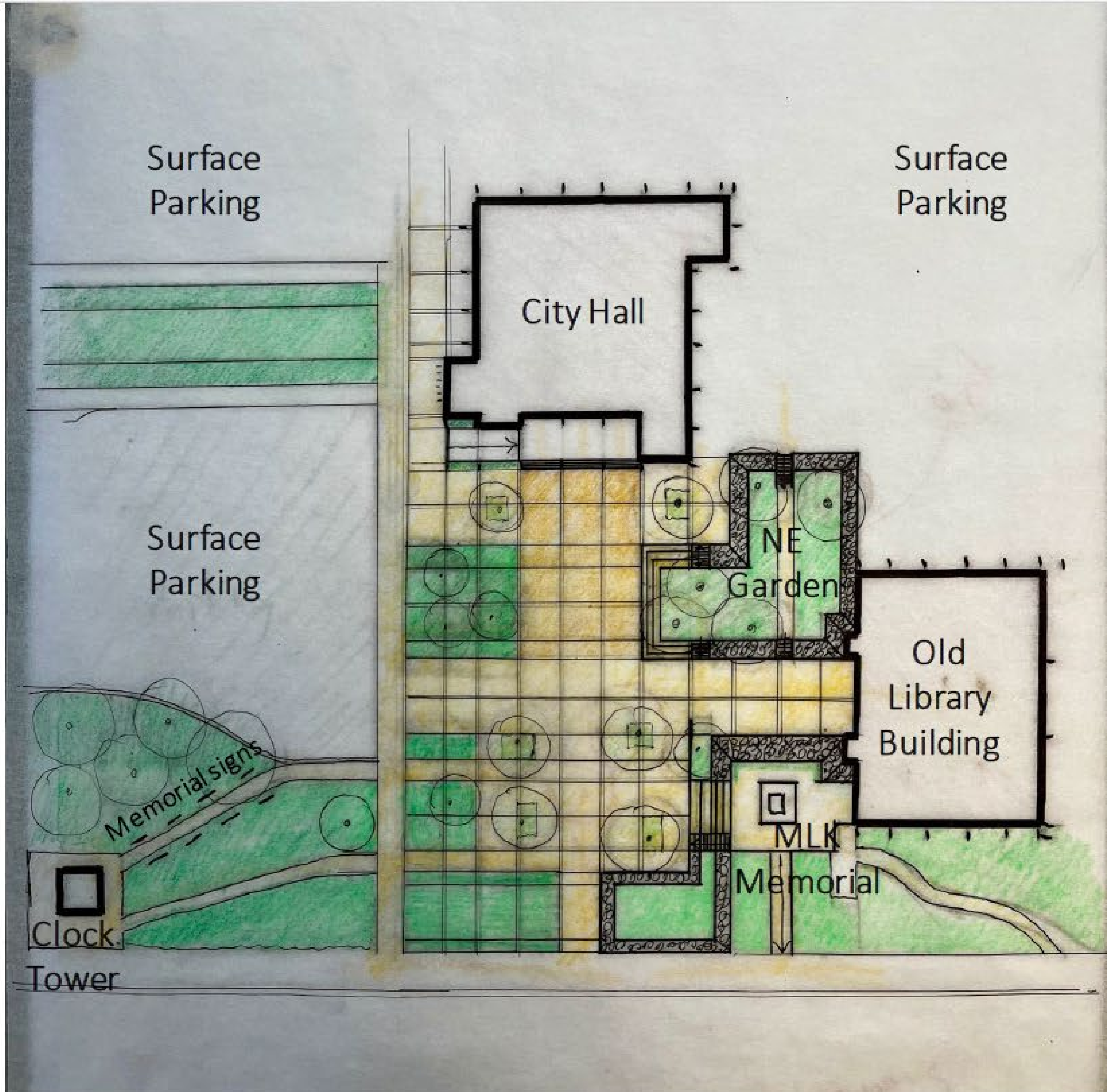
- Main Plaza area is disconnected from buildings and streets, separated by retaining walls and narrow passageways
- MLK Memorial and NE Garden disconnected from main Plaza
- Plaza disconnected from Clock Tower area
- Multiple surface parking lots on prime downtown block
- Memorial signs distributed across the site



# Proposed Conceptual

## Master Plan

- New gathering space in front of City Hall, echoing building entrance “stage”
- Raised pools replaced with grade level green areas and paving
- MLK Memorial and NE Garden connected to main Plaza by stairs and seating terraces, while maintaining historic design character
- Clock Tower area better connected to main plaza and includes coherent historic memorial signs display
- Multiple surface parking lots on prime downtown block





# Proposed Phase I Improvements:

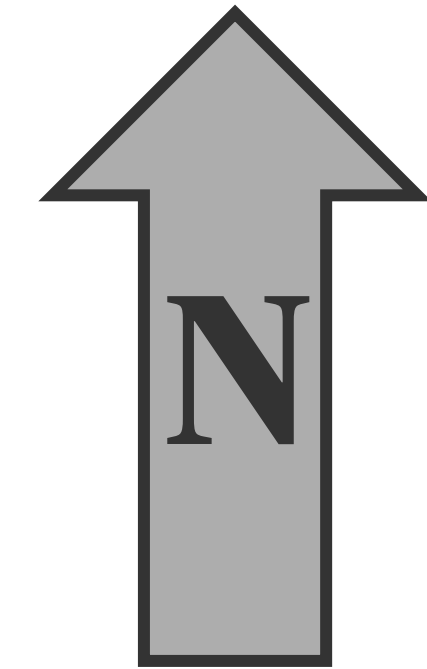
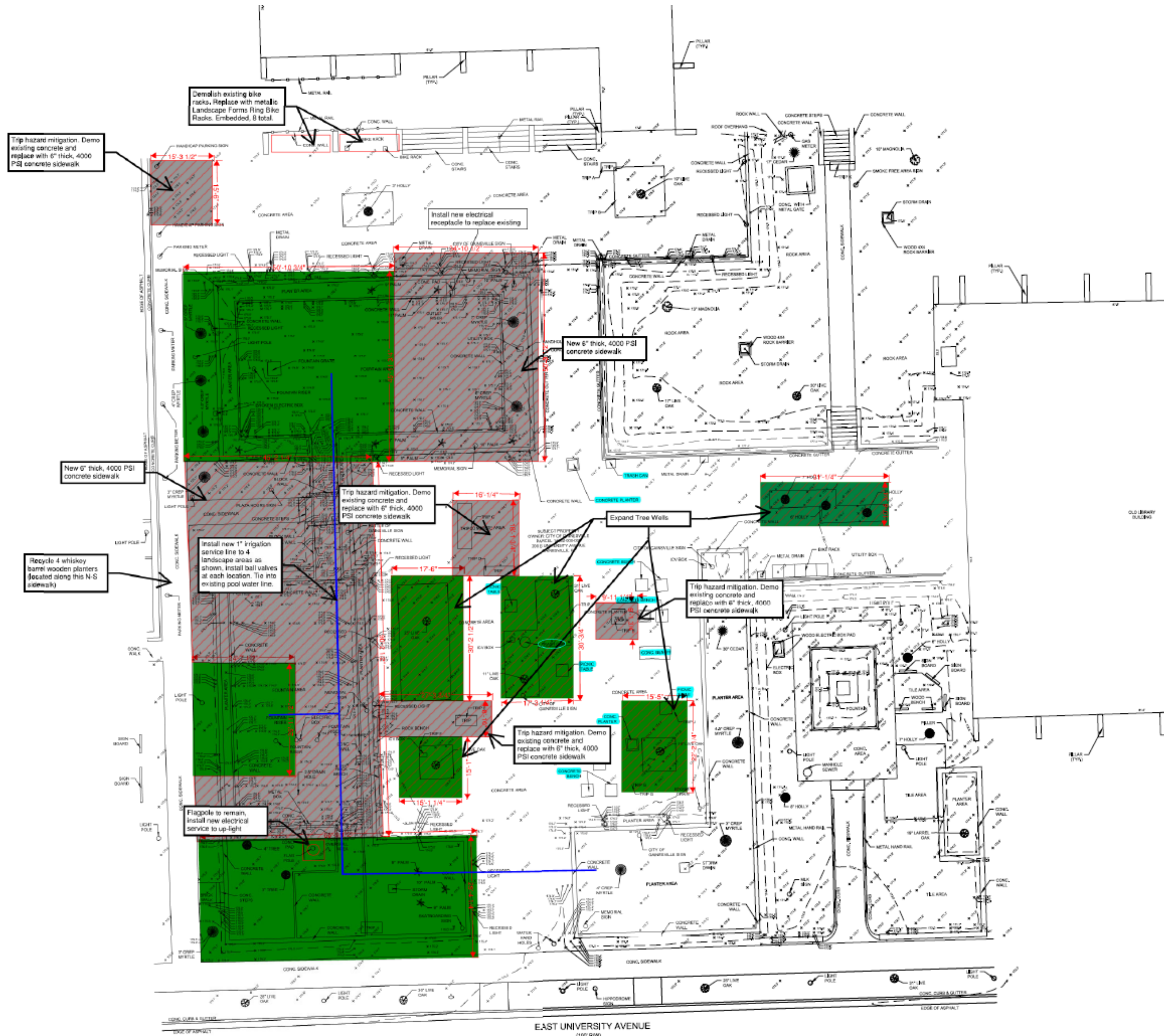
- ✿ Pond demolition and tree removal (palm trees and crepe myrtles)
- ✿ Trip hazard mitigation, tree well expansion, recycle picnic tables, recycle waste receptacles, recycle wooden whiskey barrel planters, recycle concrete planters and benches
- ✿ New and replacement concrete sidewalk
- ✿ Electrical work. Install a new service to the flag pole and new receptacle at northern pond (to replace the existing).
- ✿ Install water source connection for irrigation to establish new plantings. Irrigation will be low volume.
- ✿ New landscaping: annuals, shrubs, decorative grasses, trees (southern magnolia, bluff oak, white oak, blackgum, tulip trees) to be determined by a landscape architect and city staff. Mulch expanded tree wells. Planting palette will include native and pollinator plants to support Bee City initiatives.
- ✿ New site furnishings: bike racks, tables/chairs and trash/recycling containers.
- ✿ Signage: salvage/relocate monuments and historical markers, recreate regulatory signs to current city standards.
- ✿ Lighting: Add additional pedestrian scale lights for uniform lighting within the plaza.

# Proposed Phase II Improvements (unfunded):

- ✿ MLK Memorial and NE Garden connected by stairs and terracing
- ✿ Clock Tower sidewalk improvements
- ✿ Additional site furnishings



# Proposed Phase I Improvements Scope of Work





# Proposed Site Furnishings



Landscape Forms Mingle 4 backed seat for accessibility,  
Metallic Silver  
Quantity: 2



Landscape Forms Ring Bike Racks, Metallic Silver  
Quantity: 8



# Proposed Site Furnishings



Bigbelly Solar Trash and Recycling Compactor  
Quantity: 2





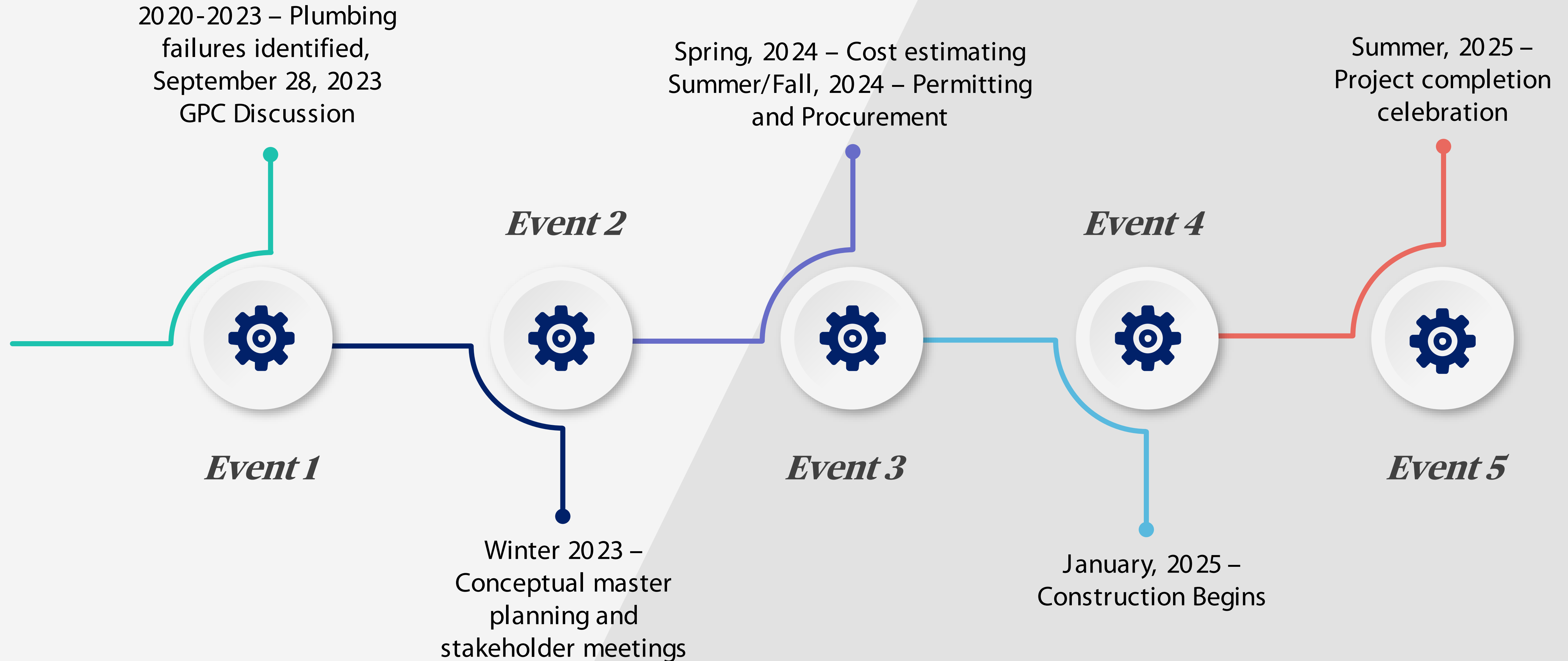
**New Landscaping – To be determined by a Landscape Architect and Staff**



City Hall Plaza Refresh - Phase I Cost Estimate		Cost Estimate
Pond demolition + tree removal (palms and crepe myrtles)	\$	29,259
Trip hazard demolition, tree well expansion, recycle picnic tables, recycle waste receptacles, recycle whiskey barrel wooden planters	\$	7,500
Concrete work (approximately 6,029 SF of new 6" thick 4000 psi concrete at \$11/SF)	\$	66,319
Electrical - New service to the flag pole and new receptacle at northern pond	\$	7,500
Plumbing work. Install a new 1" irrigation service line utilizing the existing pool water service and backflow preventer. Install irrigation isolation ball valves in valve boxes with river rock (typ.) in each landscape area (4 total).	\$	7,500
Landscape design	\$	2,500
Landscaping - New Plantings - annuals, shrubs, decorative grasses, trees (southern magnolia, bluff oak, white oak, blackgum, tulip trees) – to be determined by a landscape architect and city staff	Tree Mitigation Funds + PRCA Staff	
Mulch for new landscape areas and expanded tree wells	Tree Mitigation Funds + PRCA Staff	
New Bike Racks (8 x Landscape Forms Ring Bike Racks, Metallic Silver)	\$	7,500
New Tables and Chairs (2 x Landscape Forms Mingle 4 backed seat for accessibility, Metallic Silver)	\$	7,500
New trash/recycling receptacles (2 Bigbelly solar compactors)	\$	13,800
Replacement signage (design in-house, fabrication and installation contractual services)	\$	2,500
Lighting upgrades and conduit for future fiber	Street Lighting Fund	
Permitting Fees (City demolition permit, electrical permit, general site review)	\$	2,500
	\$	154,378
		*Total WSPP Construction Cost
*assumes no tree mitigation fees for palm tree removal - replanting covers 2:1 requirements		
*assumes no design fees other than \$2,500 for landscape architecture		
*assumes no right of way permit fees for using a few parking spaces at City Hall for the contractor's staff, a dumpster and equipment access		



# Timeline





# Staff Recommendation

The City Commission hear a staff update by Wild Spaces & Public Places, approve the proposed conceptual master plan and authorize staff to proceed with permitting and procurement.





# Questions?

