

## BID COVER PAGE

**City of  
Gainesville**

**Procurement Division**

(352) 334-5021(main)

Issue Date: 12/19/22]

# INVITATION TO BID: # PWDA-230027-DH

## Pavement Management (Preservation & Surfacing) Continuing Services

PRE-BID MEETING: ☐ Non-Mandatory ☐ Mandatory ☒ N/A ☐ Includes Site Visit

DATE: TIME:

LOCATION:

QUESTION SUBMITTAL DUE DATE: January 23, 2023 @ 3:00 pm

*All meetings and submittal deadlines are Eastern Time (ET).*

**DUE DATE FOR UPLOADING BID RESPONSE: January 30, 2023 at 3:00PM**

### SUMMARY OF SCOPE OF WORK:

Push button milling, asphalt surfacing, asphalt surface treating (crack seal, chip seal, scrub seal, micro-surfacing, cape seal and asphalt rejuvenation), roadway base work, roadway concrete work and pavement marking services.

For questions relating to this bid, contact: Diane Holder , holderds@gainesvillefl.gov

Bidder is not in arrears to City upon any debt, fee, tax or contract: ☒ Bidder is NOT in arrears ☐ Bidder IS in arrears

Bidder is not a defaulter, as surety or otherwise, upon any obligation to City: ☒ Bidder is NOT in default ☐ Bidder IS in default

Bidders who receive this bid from sources other than City of Gainesville Procurement Division or DemandStar MUST contact the Procurement Division prior to the due date to ensure any addenda are received in order to submit a responsible and responsive offer. Uploading an incomplete document may deem the offer non-responsive, causing rejection.

**ADDENDA ACKNOWLEDGMENT:** Prior to submitting my offer, I have verified that all addenda issued to date are considered as part of my offer: Addenda received (list all) # Addendum #1, dated 1/27/23

Legal Name of Bidder: Pavement Technology, Inc.

DBA: N/A

Authorized Representative Name/Title: Debbie Cancelliere, Contracts Administrator

E-mail Address: dcancelliere@pavetechinc.com

FEIN: 34-1108308

Street Address: 24144 Detroit Road, Westlake, OH 44145

Mailing Address (if different): N/A

Telephone: ( 440 ) 892-1895

Fax: ( 440 ) 892-0953

By signing this form, I acknowledge I have read and understand, and my business complies with all General Conditions and requirements set forth herein; and,

☒ Bid is in full compliance with the Specifications.

☐ Bid is in full compliance with specifications except as specifically stated and attached hereto.

SIGNATURE OF AUTHORIZED REPRESENTATIVE: \_\_\_\_\_

SIGNER'S PRINTED NAME: John Schlegel, Vice President

DATE: 1/27/2023

*This page must be completed and uploaded to DemandStar.com with your Submittal.*

## PART 4 – BID FORM

---

### Pavement Management (Preservation & Surfacing) Continuing Services

Date: 1/27/2023

The bidder hereby declares that he has examined the site of the work and informed himself fully in regard to all conditions pertaining to the place where the work is to be done, and that he has examined the plans, specifications, agreement and all documents related to the above referenced solicitation for the work and comments hereto attached. The Bidder further declares that the only persons, company or parties interested in this Bid or the Agreement to be entered into, as principals, are named herein; that this Bid is made without connection with any other person, company or parties making a Bid; and it is in all respects fair and in good faith and without collusion or fraud.

The Bidder proposes and agrees, if this Bid is accepted, to contract with City of Gainesville, Florida, through the City Commission, , in the form of Agreement specified, to furnish all necessary materials, equipment, machinery, tools, apparatus, means of transportation, labor and service necessary to complete the work covered by the Bid Solicitation for: Pavement Management (Preservation & Surfacing) Continuing Services and to furnish the prescribed Performance and Payment Bond for as required by the final agreement; and to furnish the required evidence of the specified insurance.

Attached is a list of similar projects and a list of Subcontractors as covered in the Instructions to Bidders.

The Bidder agrees to accept in full compensation for each item the prices named in the schedule incorporated herein and attached as "Bid Schedule". The Bidder understands that the quantities shown on the "Bid Schedule" are approximate only and subject to increase or decrease. Should they be increased or decreased, work will be performed at the unit price bid herein. Actual quantities will be determined upon completion of the work.



**4.1 BID FORM/PAY ITEM LIST**

Quantities requested will be placed in a single Work Order for work zones throughout the City; a single mobilization will be paid per treatment type per Work Order (crack seal, chip seal, micro-surfacing, etc). Once mobilized, the City will not require demobilization or remobilization until Work Order is completed. After hours mark-up percentage will be applied if the City request work to be performed nights, weekends and holidays and will be applied to each applicable pay item excluding mobilization. ***Each bidder shall fully complete at least one part of the bid to be considered responsive.***

**Part 1 –Base Work**

Type/Thickness	Unit	0 – 100	101 – 1000	1,001 – 5,000	5,001 – 10,000	Over 10,000
Mobilization	Lump Sum	NO BID	NO BID	NO BID	NO BID	NO BID
After-Hours Mark-up	Percentage	NO BID	NO BID	NO BID	NO BID	NO BID
Type B Stabilization	Square Yards	NO BID	NO BID	NO BID	NO BID	NO BID
4" Limerock Base	Square Yards	NO BID	NO BID	NO BID	NO BID	NO BID
6" Limerock Base	Square Yards	NO BID	NO BID	NO BID	NO BID	NO BID
8" Limerock Base	Square Yards	NO BID	NO BID	NO BID	NO BID	NO BID
10" Limerock Base	Square Yards	NO BID	NO BID	NO BID	NO BID	NO BID

**Part 2 – Crack Seal**

Crack Seal	Unit	0 – 100	101 – 1000	1,001 – 5,000	5,001 – 10,000	Over 10,000
Mobilization	Lump Sum	NO BID	NO BID	NO BID	NO BID	NO BID
After-Hours Mark-up	Percentage	NO BID	NO BID	NO BID	NO BID	NO BID
Spec. 305	Gallons	NO BID	NO BID	NO BID	NO BID	NO BID

**Part 3 – Milling Asphalt Pavement**

Depth	Unit	0 – 25,000	25,001 – 50,000	50,001 – 100,000	100,001 – 250,000	Over 250,000
Mobilization	Lump Sum	NO BID	NO BID	NO BID	NO BID	NO BID
After-Hours Mark-up	Percentage	NO BID	NO BID	NO BID	NO BID	NO BID
0.25 Inches	Square Yards	NO BID	NO BID	NO BID	NO BID	NO BID
0.50 Inches	Square Yards	NO BID	NO BID	NO BID	NO BID	NO BID
0.75 Inches	Square Yards	NO BID	NO BID	NO BID	NO BID	NO BID
1.00 Inches	Square Yards	NO BID	NO BID	NO BID	NO BID	NO BID
1.25 Inches	Square Yards	NO BID	NO BID	NO BID	NO BID	NO BID

***This page must be completed and uploaded with your Submittal.***

Depth	Unit	0 – 25,000	25,001 – 50,000	50,001 – 100,000	100,001 – 250,000	Over 250,000
1.5 Inches	Square Yards	NO BID	NO BID	NO BID	NO BID	NO BID
1.75 Inches	Square Yards	NO BID	NO BID	NO BID	NO BID	NO BID
2.0 Inches	Square Yards	NO BID	NO BID	NO BID	NO BID	NO BID
2.25 Inches	Square Yards	NO BID	NO BID	NO BID	NO BID	NO BID
2.5 Inches	Square Yards	NO BID	NO BID	NO BID	NO BID	NO BID
2.75 Inches	Square Yards	NO BID	NO BID	NO BID	NO BID	NO BID
3.0 Inches	Square Yards	NO BID	NO BID	NO BID	NO BID	NO BID
3.25 Inches	Square Yards	NO BID	NO BID	NO BID	NO BID	NO BID
3.5 Inches	Square Yards	NO BID	NO BID	NO BID	NO BID	NO BID

#### **Part 4 – Asphalt Pavement Placement**

Type	Unit	0 – 150	151 - 250	251 – 500	501 – 1000	Over 1,000
Mobilization	Lump Sum	NO BID	NO BID	NO BID	NO BID	NO BID
After-Hours Mark-up	Percentage	NO BID	NO BID	NO BID	NO BID	NO BID
Category 1 – SP-9.5	Tons	NO BID	NO BID	NO BID	NO BID	NO BID
Category 1 – SP-12.5	Tons	NO BID	NO BID	NO BID	NO BID	NO BID
Category 2 – SP-9.5	Tons	NO BID	NO BID	NO BID	NO BID	NO BID
Category 2 – SP-12.5	Tons	NO BID	NO BID	NO BID	NO BID	NO BID
Category 2 – FC-9.5	Tons	NO BID	NO BID	NO BID	NO BID	NO BID
Category 2 – FC-12.5	Tons	NO BID	NO BID	NO BID	NO BID	NO BID
Category 2 – SP-9.5 (PG 76-22)	Tons	NO BID	NO BID	NO BID	NO BID	NO BID
Category 2 – SP-12.5 (PG 76-22)	Tons	NO BID	NO BID	NO BID	NO BID	NO BID
Category 2 – FC-9.5 (PG 76-22)	Tons	NO BID	NO BID	NO BID	NO BID	NO BID
Category 2 – FC-12.5 (PG 76-22)	Tons	NO BID	NO BID	NO BID	NO BID	NO BID
Category 3 – SP-9.5	Tons	NO BID	NO BID	NO BID	NO BID	NO BID
Category 3 – SP-12.5	Tons	NO BID	NO BID	NO BID	NO BID	NO BID
Category 3 – FC-9.5	Tons	NO BID	NO BID	NO BID	NO BID	NO BID
Category 3 – FC-12.5	Tons	NO BID	NO BID	NO BID	NO BID	NO BID

*This page must be completed and uploaded with your Submittal.*

Type	Unit	0 – 150	151 - 250	251 – 500	501 – 1000	Over 1,000
Category 3 – SP-9.5 (PG 76-22)	Tons	NO BID	NO BID	NO BID	NO BID	NO BID
Category 3 – SP-12.5 (PG 76-22)	Tons	NO BID	NO BID	NO BID	NO BID	NO BID
Category 3 – FC-9.5 (PG 76-22)	Tons	NO BID	NO BID	NO BID	NO BID	NO BID
Category 3 – FC-12.5 (PG 76-22)	Tons	NO BID	NO BID	NO BID	NO BID	NO BID

**Part 5 – Asphalt Pavement Pick-up Only**

Type	Unit	0 – 150	151 - 250	251 – 500	501 – 1000	Over 1,000
After-Hours Mark-up	Percentage	NO BID	NO BID	NO BID	NO BID	NO BID
SP-9.5	Tons	NO BID	NO BID	NO BID	NO BID	NO BID
SP-12.5	Tons	NO BID	NO BID	NO BID	NO BID	NO BID
FC-9.5	Tons	NO BID	NO BID	NO BID	NO BID	NO BID
FC-12.5	Tons	NO BID	NO BID	NO BID	NO BID	NO BID
SP-9.5 (PG 76-22)	Tons	NO BID	NO BID	NO BID	NO BID	NO BID
SP-12.5 (PG 76-22)	Tons	NO BID	NO BID	NO BID	NO BID	NO BID
FC-9.5 (PG 76-22)	Tons	NO BID	NO BID	NO BID	NO BID	NO BID
FC-12.5 (PG 76-22)	Tons	NO BID	NO BID	NO BID	NO BID	NO BID

**Part 6 – Chip Seal**

Chip Seal – Spec. 335-1	Unit	10,000 – 25,000	25,001 – 50,000	50,001 – 100,000	100,001 – 250,000	Over 250,000
Mobilization	Lump Sum	NO BID	NO BID	NO BID	NO BID	NO BID
After-Hours Mark-up	Percentage	NO BID	NO BID	NO BID	NO BID	NO BID
Single Conventional	Square Yards	NO BID	NO BID	NO BID	NO BID	NO BID
Single Modified	Square Yards	NO BID	NO BID	NO BID	NO BID	NO BID
Double Conventional	Square Yards	NO BID	NO BID	NO BID	NO BID	NO BID
Double Modified	Square Yards	NO BID	NO BID	NO BID	NO BID	NO BID

*This page must be completed and uploaded with your Submittal.*

**Part 7 – Micro-Surfacing**

<b>Micro-Surfacing – Spec. 335-2</b>	<b>Unit</b>	<b>10,000 – 25,000</b>	<b>25,001 – 50,000</b>	<b>50,001 – 100,000</b>	<b>100,001 – 250,000</b>	<b>Over 250,000</b>
Mobilization	Lump Sum	NO BID	NO BID	NO BID	NO BID	NO BID
After-Hours Mark-up	Percentage	NO BID	NO BID	NO BID	NO BID	NO BID
Single Conventional	Square Yards	NO BID	NO BID	NO BID	NO BID	NO BID
Single Premium	Square Yards	NO BID	NO BID	NO BID	NO BID	NO BID
Double Conventional	Square Yards	NO BID	NO BID	NO BID	NO BID	NO BID
Double Premium	Square Yards	NO BID	NO BID	NO BID	NO BID	NO BID
Rut Filling	Unit	<b>0 – 150</b>	<b>151 - 250</b>	<b>251 – 500</b>	<b>501 – 1000</b>	<b>Over 1,000</b>
Conventional	Tons	NO BID	NO BID	NO BID	NO BID	NO BID
Premium	Tons	NO BID	NO BID	NO BID	NO BID	NO BID

**Part 8 – Asphalt Rejuvenation**

<b>Asphalt Rejuvenation – Spec. 335-4</b>	<b>Unit</b>	<b>10,000 – 25,000</b>	<b>25,001 – 50,000</b>	<b>50,001 – 100,000</b>	<b>100,001 – 250,000</b>	<b>Over 250,000</b>
Mobilization	Lump Sum	\$2,500.00	\$2,500.00	\$2,500.00	\$2,500.00	\$2,500.00
After-Hours Mark-up	Percentage	20%	20%	20%	20%	20%
Asphalt Rejuvenation	Square Yards	\$1.50	\$1.28	\$1.25	\$1.18	\$1.18
Asphalt Rejuvenation with TiO <sub>2</sub>	Square Yards	\$3.00	\$2.80	\$2.65	\$2.50	\$2.45

**Part 9 –Rejuvenating Scrub Seal**

<b>Scrub – Spec. 335-5</b>	<b>Unit</b>	<b>10,000 – 25,000</b>	<b>25,001 – 50,000</b>	<b>50,001 – 100,000</b>	<b>100,001 – 250,000</b>	<b>Over 250,000</b>
Mobilization	Lump Sum	NO BID	NO BID	NO BID	NO BID	NO BID
After-Hours Mark-up	Percentage	NO BID	NO BID	NO BID	NO BID	NO BID
Rejuvenating Scrub Seal	Square Yards	NO BID	NO BID	NO BID	NO BID	NO BID

*This page must be completed and uploaded with your Submittal.*

**Part 10 –Concrete Work**

Type	Unit	0 – 150	151 - 250	251 – 500	501 – 1000	Over 1,000
Mobilization	Lump Sum	NO BID	NO BID	NO BID	NO BID	NO BID
After-Hours Mark-up	Percentage	NO BID	NO BID	NO BID	NO BID	NO BID
4" Thick Sidewalk & Driveways	Square Yards	NO BID	NO BID	NO BID	NO BID	NO BID
6" Thick Sidewalk & Driveways	Square Yards	NO BID	NO BID	NO BID	NO BID	NO BID
8" Thick Sidewalk & Bus Stops	Square Yards	NO BID	NO BID	NO BID	NO BID	NO BID
6" Thick Concrete Curb Ramps	Square Yards	NO BID	NO BID	NO BID	NO BID	NO BID
Detectable Warning Surface	Square Foot	NO BID	NO BID	NO BID	NO BID	NO BID
Type A Curb	Linear Foot	NO BID	NO BID	NO BID	NO BID	NO BID
Type B Curb	Linear Foot	NO BID	NO BID	NO BID	NO BID	NO BID
Type D Curb	Linear Foot	NO BID	NO BID	NO BID	NO BID	NO BID
Type E Curb	Linear Foot	NO BID	NO BID	NO BID	NO BID	NO BID
Type F Curb	Linear Foot	NO BID	NO BID	NO BID	NO BID	NO BID
Drop Curb	Linear Foot	NO BID	NO BID	NO BID	NO BID	NO BID
Valley Gutter	Linear Foot	NO BID	NO BID	NO BID	NO BID	NO BID
Removal of Existing Concrete	Square Yards	NO BID	NO BID	NO BID	NO BID	NO BID

**Part 11 – Pavement Markings – (White or yellow if applicable)**

Long Line	Unit	0 – 5	5 - 10	10 – 25	25 – 50	Over 50
6" Solid Paint	Gross Mile	NO BID	NO BID	NO BID	NO BID	NO BID
6" Skip 10'-30' Paint	Gross Mile	NO BID	NO BID	NO BID	NO BID	NO BID
6" Solid Thermo	Gross Mile	NO BID	NO BID	NO BID	NO BID	NO BID
6" Skip 10'-30' Thermo	Gross Mile	NO BID	NO BID	NO BID	NO BID	NO BID

Supplemental Markings	Unit	0 – 150	151 - 250	251 – 500	501 – 1000	Over 1,000
6" Solid Paint (BLUE)	Linear Foot	NO BID	NO BID	NO BID	NO BID	NO BID

*This page must be completed and uploaded with your Submittal.*

<b>Supplemental Markings</b>	<b>Unit</b>	<b>0 – 150</b>	<b>151 - 250</b>	<b>251 – 500</b>	<b>501 – 1000</b>	<b>Over 1,000</b>
8" Solid Paint	Liner Foot	NO BID	NO BID	NO BID	NO BID	NO BID
12" Solid Paint	Liner Foot	NO BID	NO BID	NO BID	NO BID	NO BID
18" Solid Paint	Liner Foot	NO BID	NO BID	NO BID	NO BID	NO BID
24" Solid Paint	Liner Foot	NO BID	NO BID	NO BID	NO BID	NO BID
6" Skip 6'-10' Paint	Gross Liner Foot	NO BID	NO BID	NO BID	NO BID	NO BID
6" Skip 2'-4' Paint	Gross Liner Foot	NO BID	NO BID	NO BID	NO BID	NO BID
6" Skip 3'-9' Paint	Gross Liner Foot	NO BID	NO BID	NO BID	NO BID	NO BID
6" Solid Thermo (BLUE)	Linear Foot	NO BID	NO BID	NO BID	NO BID	NO BID
8" Solid Thermo	Liner Foot	NO BID	NO BID	NO BID	NO BID	NO BID
12" Solid Thermo	Liner Foot	NO BID	NO BID	NO BID	NO BID	NO BID
18" Solid Thermo	Liner Foot	NO BID	NO BID	NO BID	NO BID	NO BID
24" Solid Thermo	Liner Foot	NO BID	NO BID	NO BID	NO BID	NO BID
6" Skip 6'-10' Thermo	Gross Liner Foot	NO BID	NO BID	NO BID	NO BID	NO BID
6" Skip 2'-4' Thermo	Gross Liner Foot	NO BID	NO BID	NO BID	NO BID	NO BID
6" Skip 3'-9' Thermo	Gross Liner Foot	NO BID	NO BID	NO BID	NO BID	NO BID
Work Zone RPMs	Each	NO BID	NO BID	NO BID	NO BID	NO BID
Permanent RPMs	Each	NO BID	NO BID	NO BID	NO BID	NO BID
Yield Lines Paint	Square Foot	NO BID	NO BID	NO BID	NO BID	NO BID
Speed Hump/Speed Table Paint	Square Foot	NO BID	NO BID	NO BID	NO BID	NO BID
Misc. Paint (Bullnose, Curb, Etc.)	Square Foot	NO BID	NO BID	NO BID	NO BID	NO BID
Yield Lines Thermo	Square Foot	NO BID	NO BID	NO BID	NO BID	NO BID
Speed Hump/Speed Table Thermo	Square Foot	NO BID	NO BID	NO BID	NO BID	NO BID
Misc. Thermo (Bullnose, Curb, Etc.)	Square Foot	NO BID	NO BID	NO BID	NO BID	NO BID

<b>Messages &amp; Symbols</b>	<b>Unit</b>	<b>0 – 5</b>	<b>6 - 10</b>	<b>11 – 25</b>	<b>26 – 50</b>	<b>Over 50</b>
Left (Message) Paint	Each	NO BID	NO BID	NO BID	NO BID	NO BID
Right (Message) Paint	Each	NO BID	NO BID	NO BID	NO BID	NO BID

*This page must be completed and uploaded with your Submittal.*



<b>Messages &amp; Symbols</b>	<b>Unit</b>	<b>0 – 5</b>	<b>6 - 10</b>	<b>11 – 25</b>	<b>26 – 50</b>	<b>Over 50</b>
Stop (Message) Paint	Each	NO BID	NO BID	NO BID	NO BID	NO BID
Lane (4') (Message) Paint	Each	NO BID	NO BID	NO BID	NO BID	NO BID
Only (4') (Message) Paint	Each	NO BID	NO BID	NO BID	NO BID	NO BID
Only (8') (Message) Paint	Each	NO BID	NO BID	NO BID	NO BID	NO BID
Lane (8') (Message) Paint	Each	NO BID	NO BID	NO BID	NO BID	NO BID
Turn (Message) Paint	Each	NO BID	NO BID	NO BID	NO BID	NO BID
Merge (Message) Paint	Each	NO BID	NO BID	NO BID	NO BID	NO BID
Bus (Message) Paint	Each	NO BID	NO BID	NO BID	NO BID	NO BID
School (Message) Paint	Each	NO BID	NO BID	NO BID	NO BID	NO BID
Railroad (Message) Paint	Each	NO BID	NO BID	NO BID	NO BID	NO BID
Railroad (Bike Path) (Message) Paint	Each	NO BID	NO BID	NO BID	NO BID	NO BID
Wrong Way Arrow (Symbol) Paint	Each	NO BID	NO BID	NO BID	NO BID	NO BID
U-Turn (Symbol) Paint	Each	NO BID	NO BID	NO BID	NO BID	NO BID
Thru Arrow (Symbol) Paint	Each	NO BID	NO BID	NO BID	NO BID	NO BID
Left or Right Arrow (Symbol) Paint	Each	NO BID	NO BID	NO BID	NO BID	NO BID
Left or Right and Thru Arrow (Symbol) Paint	Each	NO BID	NO BID	NO BID	NO BID	NO BID
Left, Right and Thru Arrow (Symbol) Paint	Each	NO BID	NO BID	NO BID	NO BID	NO BID
Bike Lane Arrow (Symbol) Paint	Each	NO BID	NO BID	NO BID	NO BID	NO BID
Helmeted Bicyclist (Symbol) Paint	Each	NO BID	NO BID	NO BID	NO BID	NO BID
Shared Lane Marking (Symbol) (Paint	Each	NO BID	NO BID	NO BID	NO BID	NO BID

*This page must be completed and uploaded with your Submittal.*

<b>Messages &amp; Symbols</b>	<b>Unit</b>	<b>0 – 5</b>	<b>6 - 10</b>	<b>11 – 25</b>	<b>26 – 50</b>	<b>Over 50</b>
Accessibility (3') (Symbol) Paint	Each	NO BID	NO BID	NO BID	NO BID	NO BID
Accessibility (5') (Symbol) Paint	Each	NO BID	NO BID	NO BID	NO BID	NO BID
Left (Message) Thermo	Each	NO BID	NO BID	NO BID	NO BID	NO BID
Right (Message) Thermo	Each	NO BID	NO BID	NO BID	NO BID	NO BID
Stop (Message) Thermo	Each	NO BID	NO BID	NO BID	NO BID	NO BID
Lane (4') (Message) Thermo	Each	NO BID	NO BID	NO BID	NO BID	NO BID
Only (4') (Message) Thermo	Each	NO BID	NO BID	NO BID	NO BID	NO BID
Only (8') (Message) Thermo	Each	NO BID	NO BID	NO BID	NO BID	NO BID
Lane (8') (Message) Thermo	Each	NO BID	NO BID	NO BID	NO BID	NO BID
Turn (Message) Thermo	Each	NO BID	NO BID	NO BID	NO BID	NO BID
Merge (Message) Thermo	Each	NO BID	NO BID	NO BID	NO BID	NO BID
Bus (Message) Thermo	Each	NO BID	NO BID	NO BID	NO BID	NO BID
School (Message) Thermo	Each	NO BID	NO BID	NO BID	NO BID	NO BID
Railroad (Message) Thermo	Each	NO BID	NO BID	NO BID	NO BID	
Railroad (Bike Path) (Message) Thermo	Each	NO BID	NO BID	NO BID	NO BID	NO BID
Wrong Way Arrow (Symbol) Thermo	Each	NO BID	NO BID	NO BID	NO BID	NO BID
U-Turn (Symbol) Thermo	Each	NO BID	NO BID	NO BID	NO BID	NO BID
Thru Arrow (Symbol) Thermo	Each	NO BID	NO BID	NO BID	NO BID	NO BID
Left or Right Arrow (Symbol) Thermo	Each	NO BID	NO BID	NO BID	NO BID	NO BID
Left or Right and Thru Arrow	Each	NO BID	NO BID	NO BID	NO BID	NO BID

*This page must be completed and uploaded with your Submittal.*

<b>Messages &amp; Symbols</b>	<b>Unit</b>	<b>0 – 5</b>	<b>6 - 10</b>	<b>11 – 25</b>	<b>26 – 50</b>	<b>Over 50</b>
(Symbol) Thermo	NO BID	NO BID	NO BID	NO BID	NO BID	NO BID
Left, Right and Thru Arrow (Symbol) Thermo	Each	NO BID	NO BID	NO BID	NO BID	NO BID
Bike Lane Arrow (Symbol) (Preformed Only) Thermo	Each	NO BID	NO BID	NO BID	NO BID	NO BID
Helmeted Bicyclist (Symbol) (Preformed Only) Thermo	Each	NO BID	NO BID	NO BID	NO BID	NO BID
Shared Lane Marking (Symbol) (Preformed Only) Thermo	Each	NO BID	NO BID	NO BID	NO BID	NO BID
Accessibility (3') (Symbol) Thermo	Each	NO BID	NO BID	NO BID	NO BID	NO BID
Accessibility (5') (Symbol) Thermo	Each	NO BID	NO BID	NO BID	NO BID	NO BID

<b>Removal – Grinding</b>	<b>Unit</b>	<b>0 – 150</b>	<b>151 - 250</b>	<b>251 – 500</b>	<b>501 – 1000</b>	<b>Over 1,000</b>
Mobilization	Lump Sum	NO BID	NO BID	NO BID	NO BID	NO BID
Painted Symbols and Messages	Square Foot	NO BID	NO BID	NO BID	NO BID	NO BID
Painted Stripe	Square Foot	NO BID	NO BID	NO BID	NO BID	NO BID
Thermoplastic Symbols and Messages	Square Foot	NO BID	NO BID	NO BID	NO BID	NO BID
Thermoplastic Stripe	Square Foot	NO BID	NO BID	NO BID	NO BID	NO BID

<b>Removal – Water Blasting</b>	<b>Unit</b>	<b>0 – 150</b>	<b>151 - 250</b>	<b>251 – 500</b>	<b>501 – 1000</b>	<b>Over 1,000</b>
Mobilization	Lump Sum	NO BID	NO BID	NO BID	NO BID	NO BID
Painted Symbols and Messages	Square Foot	NO BID	NO BID	NO BID	NO BID	NO BID
Painted Stripe	Square Foot	NO BID	NO BIDN	NO BID	NO BID	NO BID
Thermoplastic Symbols and Messages	Square Foot	NO BID	NO BID	NO BID	NO BID	NO BID
Thermoplastic Stripe	Square Foot	NO BID	NO BID	NO BID	NO BID	NO BID

*This page must be completed and uploaded with your Submittal.*

After-Hours Mark-up	Percentage	NO BID	NO BID	NO BID	NO BID	NO BID
------------------------	------------	--------	--------	--------	--------	--------

List of Unit Abbreviations:

SY Square Yards	GL Gallons	SD Side Drain
LS Lump Sum	MG Thousand Gallons	ED Each Day
CY Cubic Yards	GM Gross Miles	CD Cross Drain
EA Each	LF Linear Feet	AC Acre
TN Tons	NM Net Miles	RCP Reinforced Concrete Pipe
HR Hour	AS Assembly	PI Per Intersection

Note: THE CITY RESERVES THE RIGHT TO AWARD THIS BID ON THE BASIS OF EACH LINE INDIVIDUALLY, ANY COMBINATION OF LINE ITEMS OR ALL LINE ITEMS COMBINED AS IT DETERMINES TO BE IN ITS BEST INTEREST. THE CITY RESERVES THE RIGHT TO NOT AWARD ANY LINE ITEM AS IT DETERMINES TO BE IN ITS BEST INTEREST.

Note: THE CITY RESERVES THE RIGHT TO ADD OR DELETE LOCATIONS, SERVICES, ITEMS, OR MATERIALS FROM THIS CONTRACT SHOULD IT BE IN THE BEST INTEREST OF THE CITY. THE CONTRACT PRICE MAY BE ADJUSTED UPON AGREEMENT OF THE CONTRACTOR AND THE CITY'S REPRESENTATIVE AND BASED UPON BID PRICES.

**[THE REMAINDER OF THIS PAGE IS INTENTIONALLY BLANK]**

## DRUG-FREE WORKPLACE FORM

The undersigned bidder in accordance with Florida Statute 287.087 hereby certifies that

Pavement Technology, Inc.

(Name of Bidder)

does:

1. Publish a statement notifying employees that the unlawful manufacture, distribution, dispensing, possession, or use of a controlled substance is prohibited in the workplace and specifying the actions that will be taken against employees for violations of such prohibition.
2. Inform employees about the dangers of drug abuse in the workplace, the business's policy of maintaining a drug-free workplace, any available drug counseling, rehabilitation, and employee assistance programs, and the penalties that may be imposed upon employees for the drug abuse violations.
3. Give each employee engaged in providing the commodities or contractual services that are under bid a copy of the statement specified in subsection (1).
4. In the statement specified in subsection (1), notify the employees that, as a condition of working on the commodities or contractual services that are under bid, the employee will abide by the terms of the statement and will notify the employer of any conviction of, or plea of guilty or nolo contendere to, any violation of Chapter 893 or of any controlled substance law of the United States or any state, for a violation occurring in the workplace no later than five (5) days after such conviction.
5. Impose a sanction on, or require the satisfactory participation in a drug abuse assistance or rehabilitation program if such is available in the employee's community, by any employee who is so convicted.
6. Make a good faith effort to continue to maintain a drug-free workplace through implementation of this section.

As the person authorized to sign the statement, I certify that this bidder complies fully with the above requirements.

  
\_\_\_\_\_  
Bidder's Signature John Schlegel, Vice President

1/27/2023

\_\_\_\_\_  
Date

*In the event of a tie bid, bidders with a Drug Free Workplace Program will be given preference. To be considered for the preference, this document must be completed and uploaded to DemandStar.com with your Submittal.*

## BIDDER VERIFICATION FORM

### LOCAL PREFERENCE (Check one)

Local Preference requested: ☐ YES ☒ NO

A copy of the following documents must be included in your submission if you are requesting Local Preference:

- Business Tax Receipt
- Zoning Compliance Permit

### QUALIFIED SMALL BUSINESS AND/OR SERVICE DISABLED VETERAN BUSINESS STATUS (Check one)

Is your business qualified, in accordance with the City of Gainesville's Small Business Procurement Program, as a local Small Business? ☐ YES ☒ NO

Is your business qualified, in accordance with the City of Gainesville's Small Business Procurement Program, as a local Service-Disabled Veteran Business? ☐ YES ☒ NO

### LIVING WAGE COMPLIANCE

See Living Wage Decision Tree:

(Check one)

- ☐ Living Wage Ordinance does not apply (check all that apply)
- ☐ Not a covered service
  - ☐ Contract does not exceed \$100,000
  - ☐ Not a for-profit individual, business entity, corporation, partnership, limited liability company, joint venture, or similar business, who or which employees 50 or more persons, but not including employees of any subsidiaries, affiliates or parent businesses.
  - ☐ Located within the City of Gainesville enterprise zone.
- ☒ Living Wage Ordinance applies and the completed Certification of Compliance with Living Wage is included with this bid.

**NOTE: If Contractor has stated Living Wage Ordinance does not apply and it is later determined Living Wage Ordinance does apply, Contractor will be required to comply with the provision of the City of Gainesville's living wage requirements, as applicable, without any adjustment to the bid price.**

### REGISTERED TO DO BUSINESS IN THE STATE OF FLORIDA

Is Bidder registered with Florida Department of State's, Division of Corporations, to do business in the State of Florida?

☒ YES ☐ NO (refer to Part 1, 1.5, last paragraph)

If the answer is "YES", provide a copy of SunBiz registration or SunBiz Document Number (# P12308)

If the answer is "NO", please state reason why: \_\_\_\_\_

### DIVERSITY AND INCLUSION (Applies to solicitations above \$50,000)

Does your company have a policy on diversity and inclusion? ☒ YES ☐ NO

If yes, please attach a copy of the policy to your submittal.

*Note: Possessing a diversity and inclusion policy will have no effect on the City's consideration of your submittal, but is simply being requested for information gathering purposes.*

**Pavement Technology, Inc.**

Bidder's Name

**John Schlegel, Vice President**

Printed Name/Title of Authorized Representative

Signature of Authorized Representative

1/27/2023

Date

***This page must be completed and uploaded to DemandStar.com with your Submittal.***



## CUSTOMER HISTORY

Name of Bidder: Pavement Technology, Inc.

Provide a list of prior customers **for similar services** that your bidder has provided within the last five (5) years. Copy form as necessary.

Customer Name: <b>City of Plantation</b>	
Address: <b>400 N. W. 73rd Ave.</b>	
City, State, Zip: <b>Plantation, FL 33317</b>	
Point of Contact: <b>Steve Rodgers</b>	Phone Number: <b>954-797-2200</b>
E-mail: <b>srodgers@plantation.org</b>	

Customer Name: <b>Polk County</b>	
Address: <b>3000 Sheffield Road</b>	
City, State, Zip: <b>Bartow, FL 33830</b>	
Point of Contact: <b>Austin Potts</b>	Phone Number: <b>865-535-2221</b>
E-mail: <b>austinpotts@polk-county.net</b>	

Customer Name: <b>City of Orlando</b>	
Address: <b>400 S. Orange Avenue</b>	
City, State, Zip: <b>Orlando, FL 32801</b>	
Point of Contact: <b>Howard Elkin</b>	Phone Number: <b>407-246-2289</b>
E-mail: <b>howard.elkin@cityoforlando.net</b>	

Customer Name: <b>City of Palm Bay</b>	
Address: <b>120 Malabar Road SE</b>	
City, State, Zip: <b>Palm Bay, FL 32907</b>	
Point of Contact: <b>Frank Watanabe</b>	Phone Number: <b>321-409-6341</b>
E-mail: <b>frank.watanabe@palmbayflorida.org</b>	

Customer Name: <b>St. Johns County</b>	
Address: <b>2740 Industry Center Road</b>	
City, State, Zip: <b>St. Augustine, FL 32084</b>	
Point of Contact: <b>Tommy Mashburn</b>	Phone Number: <b>904-209-0184</b>
E-mail: <b>tmashburn@sjcfl.us</b>	

## Request for Taxpayer Identification Number and Certification

Go to [www.irs.gov/FormW9](http://www.irs.gov/FormW9) for instructions and the latest information.

Give Form to the  
requester. Do not  
send to the IRS.

Print or type.  
See Specific Instructions on page 3.

1 Name (as shown on your income tax return). Name is required on this line; do not leave this line blank.

Pavement Technology, Inc.

2 Business name/disregarded entity name, if different from above

3 Check appropriate box for federal tax classification of the person whose name is entered on line 1. Check only **one** of the following seven boxes.

☐ Individual/sole proprietor or single-member LLC ☐ C Corporation ☒ S Corporation ☐ Partnership ☐ Trust/estate

☐ Limited liability company. Enter the tax classification (C=C corporation, S=S corporation, P=Partnership) ▶

**Note:** Check the appropriate box in the line above for the tax classification of the single-member owner. Do not check LLC if the LLC is classified as a single-member LLC that is disregarded from the owner unless the owner of the LLC is another LLC that is not disregarded from the owner for U.S. federal tax purposes. Otherwise, a single-member LLC that is disregarded from the owner should check the appropriate box for the tax classification of its owner.

☐ Other (see instructions) ▶

4 Exemptions (codes apply only to certain entities, not individuals; see instructions on page 3):

Exempt payee code (if any) \_\_\_\_\_

Exemption from FATCA reporting code (if any) \_\_\_\_\_

(Applies to accounts maintained outside the U.S.)

5 Address (number, street, and apt. or suite no.) See instructions.

24144 Detroit Road

6 City, state, and ZIP code

Westlake, OH 44145

Requester's name and address (optional)

The City of Gainesville  
200 E. University Ave.  
Gainesville, FL 32601

7 List account number(s) here (optional)

### Part I Taxpayer Identification Number (TIN)

Enter your TIN in the appropriate box. The TIN provided must match the name given on line 1 to avoid backup withholding. For individuals, this is generally your social security number (SSN). However, for a resident alien, sole proprietor, or disregarded entity, see the instructions for Part I, later. For other entities, it is your employer identification number (EIN). If you do not have a number, see *How to get a TIN*, later.

**Note:** If the account is in more than one name, see the instructions for line 1. Also see *What Name and Number To Give the Requester* for guidelines on whose number to enter.

Social security number

\_\_\_\_ - \_\_\_\_ - \_\_\_\_

or

Employer identification number

3 4 - 1 1 0 8 3 0 8

### Part II Certification

Under penalties of perjury, I certify that:

- The number shown on this form is my correct taxpayer identification number (or I am waiting for a number to be issued to me); and
- I am not subject to backup withholding because: (a) I am exempt from backup withholding, or (b) I have not been notified by the Internal Revenue Service (IRS) that I am subject to backup withholding as a result of a failure to report all interest or dividends, or (c) the IRS has notified me that I am no longer subject to backup withholding; and
- I am a U.S. citizen or other U.S. person (defined below); and
- The FATCA code(s) entered on this form (if any) indicating that I am exempt from FATCA reporting is correct.

**Certification instructions:** You must cross out item 2 above if you have been notified by the IRS that you are currently subject to backup withholding because you have failed to report all interest and dividends on your tax return. For real estate transactions, item 2 does not apply. For mortgage interest paid, acquisition or abandonment of secured property, cancellation of debt, contributions to an individual retirement arrangement (IRA), and generally, payments other than interest and dividends, you are not required to sign the certification, but you must provide your correct TIN. See the instructions for Part II, later.

Sign  
Here

Signature of  
U.S. person ▶

Date ▶ 1/23/2023

### General Instructions

Section references are to the Internal Revenue Code unless otherwise noted.

**Future developments.** For the latest information about developments related to Form W-9 and its instructions, such as legislation enacted after they were published, go to [www.irs.gov/FormW9](http://www.irs.gov/FormW9).

### Purpose of Form

An individual or entity (Form W-9 requester) who is required to file an information return with the IRS must obtain your correct taxpayer identification number (TIN) which may be your social security number (SSN), individual taxpayer identification number (ITIN), adoption taxpayer identification number (ATIN), or employer identification number (EIN), to report on an information return the amount paid to you, or other amount reportable on an information return. Examples of information returns include, but are not limited to, the following.

- Form 1099-INT (interest earned or paid)

- Form 1099-DIV (dividends, including those from stocks or mutual funds)
  - Form 1099-MISC (various types of income, prizes, awards, or gross proceeds)
  - Form 1099-B (stock or mutual fund sales and certain other transactions by brokers)
  - Form 1099-S (proceeds from real estate transactions)
  - Form 1099-K (merchant card and third party network transactions)
  - Form 1098 (home mortgage interest), 1098-E (student loan interest), 1098-T (tuition)
  - Form 1099-C (canceled debt)
  - Form 1099-A (acquisition or abandonment of secured property)
- Use Form W-9 only if you are a U.S. person (including a resident alien), to provide your correct TIN.

If you do not return Form W-9 to the requester with a TIN, you might be subject to backup withholding. See *What is backup withholding*, later.



# CERTIFICATE OF LIABILITY INSURANCE

DATE (MM/DD/YYYY)

1/16/2023

THIS CERTIFICATE IS ISSUED AS A MATTER OF INFORMATION ONLY AND CONFERS NO RIGHTS UPON THE CERTIFICATE HOLDER. THIS CERTIFICATE DOES NOT AFFIRMATIVELY OR NEGATIVELY AMEND, EXTEND OR ALTER THE COVERAGE AFFORDED BY THE POLICIES BELOW. THIS CERTIFICATE OF INSURANCE DOES NOT CONSTITUTE A CONTRACT BETWEEN THE ISSUING INSURER(S), AUTHORIZED REPRESENTATIVE OR PRODUCER, AND THE CERTIFICATE HOLDER.

**IMPORTANT:** If the certificate holder is an **ADDITIONAL INSURED**, the policy(ies) must have **ADDITIONAL INSURED** provisions or be endorsed. If **SUBROGATION IS WAIVED**, subject to the terms and conditions of the policy, certain policies may require an endorsement. A statement on this certificate does not confer rights to the certificate holder in lieu of such endorsement(s).

<b>PRODUCER</b> McGowan & Company, Inc. 20595 Lorain Rd Fairview Park OH 44126	<b>CONTACT NAME:</b> Frances Lyons <b>PHONE (A/C, No, Ext):</b> 440.895.4359 <b>E-MAIL ADDRESS:</b> flyons@mcgowaninsurance.com <b>FAX (A/C, No):</b> 440-333-3214
<b>INSURED</b> Pavement Technology, Inc 24144 Detroit Rd Westlake OH 44145	<b>INSURER(S) AFFORDING COVERAGE</b> <b>INSURER A:</b> Travelers Property Casualty Co of America <b>INSURER B:</b> Phoenix Insurance Company <b>INSURER C:</b> <b>INSURER D:</b> <b>INSURER E:</b> <b>INSURER F:</b>
<b>PAVETEC-01</b>	<b>NAIC #</b> 36161 25623

**COVERAGES****CERTIFICATE NUMBER: 1016033447****REVISION NUMBER:**

THIS IS TO CERTIFY THAT THE POLICIES OF INSURANCE LISTED BELOW HAVE BEEN ISSUED TO THE INSURED NAMED ABOVE FOR THE POLICY PERIOD INDICATED. NOTWITHSTANDING ANY REQUIREMENT, TERM OR CONDITION OF ANY CONTRACT OR OTHER DOCUMENT WITH RESPECT TO WHICH THIS CERTIFICATE MAY BE ISSUED OR MAY PERTAIN, THE INSURANCE AFFORDED BY THE POLICIES DESCRIBED HEREIN IS SUBJECT TO ALL THE TERMS, EXCLUSIONS AND CONDITIONS OF SUCH POLICIES. LIMITS SHOWN MAY HAVE BEEN REDUCED BY PAID CLAIMS.

INSR LTR	TYPE OF INSURANCE	ADDL INSD	SUBR WVD	POLICY NUMBER	POLICY EFF (MM/DD/YYYY)	POLICY EXP (MM/DD/YYYY)	LIMITS
A	<input checked="" type="checkbox"/> <b>COMMERCIAL GENERAL LIABILITY</b> <input type="checkbox"/> CLAIMS-MADE <input checked="" type="checkbox"/> OCCUR  GEN'L AGGREGATE LIMIT APPLIES PER: <input type="checkbox"/> POLICY <input checked="" type="checkbox"/> PROJECT <input type="checkbox"/> LOC OTHER:	Y		DTCO324N6425	3/1/2022	3/1/2023	EACH OCCURRENCE \$ 1,000,000 DAMAGE TO RENTED PREMISES (Ea occurrence) \$ 500,000 MED EXP (Any one person) \$ 10,000 PERSONAL & ADV INJURY \$ 1,000,000 GENERAL AGGREGATE \$ 2,000,000 PRODUCTS - COMP/OP AGG \$ 2,000,000 \$
B	<input checked="" type="checkbox"/> <b>AUTOMOBILE LIABILITY</b> <input checked="" type="checkbox"/> ANY AUTO <input type="checkbox"/> OWNED AUTOS ONLY <input checked="" type="checkbox"/> HIRED AUTOS ONLY <input type="checkbox"/> SCHEDULED AUTOS <input checked="" type="checkbox"/> NON-OWNED AUTOS ONLY	Y		8108L678293	3/1/2022	3/1/2023	COMBINED SINGLE LIMIT (Ea accident) \$ 1,000,000 BODILY INJURY (Per person) \$ BODILY INJURY (Per accident) \$ PROPERTY DAMAGE (Per accident) \$ \$
A	<input checked="" type="checkbox"/> <b>UMBRELLA LIAB</b> <input checked="" type="checkbox"/> OCCUR <input type="checkbox"/> EXCESS LIAB <input type="checkbox"/> CLAIMS-MADE <input type="checkbox"/> DED <input checked="" type="checkbox"/> RETENTION \$ 10,000	Y		CUP2J391570	3/1/2022	3/1/2023	EACH OCCURRENCE \$ 5,000,000 AGGREGATE \$ 5,000,000 \$
A	<input checked="" type="checkbox"/> <b>WORKERS COMPENSATION AND EMPLOYERS' LIABILITY</b> ANY PROPRIETOR/PARTNER/EXECUTIVE OFFICER/MEMBER EXCLUDED? (Mandatory in NH) If yes, describe under DESCRIPTION OF OPERATIONS below	Y/N	N/A	UB0K349145	3/1/2022	3/1/2023	PER STATUTE <input type="checkbox"/> OTH-ER <input type="checkbox"/> E.L. EACH ACCIDENT \$ 1,000,000 E.L. DISEASE - EA EMPLOYEE \$ 1,000,000 E.L. DISEASE - POLICY LIMIT \$ 1,000,000

DESCRIPTION OF OPERATIONS / LOCATIONS / VEHICLES (ACORD 101, Additional Remarks Schedule, may be attached if more space is required)

Project: 2023 Pavement Management - ITB PWDA-230027-DH

Certificate Holder is included as an additional insured as required by written contract. It is further agreed that a waiver of subrogation applies in favor of the certificate holder as required by written contract.

**CERTIFICATE HOLDER****CANCELLATION**

City of Gainesville, Florida, a Municipal Corporation  
200 E. University Avenue  
Gainesville FL 32601

SHOULD ANY OF THE ABOVE DESCRIBED POLICIES BE CANCELLED BEFORE THE EXPIRATION DATE THEREOF, NOTICE WILL BE DELIVERED IN ACCORDANCE WITH THE POLICY PROVISIONS.

AUTHORIZED REPRESENTATIVE

© 1988-2015 ACORD CORPORATION. All rights reserved.

# *State of Florida*

## *Department of State*

I certify from the records of this office that PAVEMENT TECHNOLOGY, INC. is an Ohio corporation authorized to transact business in the State of Florida, qualified on November 26, 1986.

The document number of this corporation is P12308.

I further certify that said corporation has paid all fees due this office through December 31, 2023, that its most recent annual report/uniform business report was filed on January 12, 2023, and that its status is active.

I further certify that said corporation has not filed a Certificate of Withdrawal.

*Given under my hand and the  
Great Seal of the State of Florida  
at Tallahassee, the Capital, this  
the Twelfth day of January, 2023*



  
*Secretary of State*

**Tracking Number: 4520686575CC**

**To authenticate this certificate, visit the following site, enter this number, and then follow the instructions displayed.**

**<https://services.sunbiz.org/Filings/CertificateOfStatus/CertificateAuthentication>**

**A.R.A.-1 Ti<sup>®</sup> Asphalt  
Rejuvenator/Sealer  
Product Data**



**EMULSIONS**  
INC.

Quality Products and Dependable Service Since 1981

## CERTIFICATE OF COMPLIANCE

TO WHOM IT MAY CONCERN

PRODUCT: A.R.A.-1 Ti®

IT IS HEREBY CERTIFIED THAT THE ABOVE PRODUCT DESIGNATED HEREON  
CONFORMS TO THE APPLICABLE SPECIFICATIONS FOR THE PRODUCT SO  
INDICATED, AND THAT PAVEMENT TECHNOLOGY, INCORPORATED HAS BEEN  
AN AUTHORIZED APPLICATOR FOR D & D EMULSIONS, INC.

Date: January 25, 2023    Approved by:

A handwritten signature in black ink, appearing to read 'Charles Dawson V.P.', written over a horizontal line.

Charles Dawson  
Vice President





Real Science.  
Real Results.

**PlusTi™**  
**Smog Eating Roads**

A Better Way to Get There

**Pavement Technology, Inc.**

800-333-6309

www.pavetechinc.com

## A.R.A.-1 Ti® asphalt rejuvenator/sealer



PlusTi A.R.A.-1 Ti® asphalt rejuvenator/sealer application

The PlusTi™ family of smog-eating road penetrants includes A.R.A.-1 Ti® pollution-reducing asphalt rejuvenator/sealer. Formulated from the same maltene fractions that vitalize asphalt binders, A.R.A.-1 Ti asphalt rejuvenator/sealer revitalizes aging asphalt while leaving behind a self-cleaning surface that removes nitrogen oxides (NOx), volatile organic compounds and other pollutants introduced into the atmosphere through vehicular exhaust. The air-purifying surface regenerates itself, contributing to compliance with U.S. EPA's stringent new National Ambient Air Quality Standard (NAAQS). The ideal solution for government agencies dealing with reduced budgets, deteriorating infrastructures and pollution concerns.

### Markets

- DOTs
- Urban/Suburban Municipalities, Counties, Gated Communities
- Airports
- Bridges
- Parking Lots
- Highway Shoulders

### Compatible Substrates

- For newly constructed asphalt pavement, PlusTi asphalt rejuvenator/sealer improves durability by replacing volatile components lost to the heat of production, providing an in-depth seal to reduce permeability.

- For older asphalt pavement, PlusTi asphalt rejuvenator/sealer reverses the effects of UV, weathering and water intrusion by reintroducing volatile components deep into the asphalt to restore ductility and flexibility.

### Benefits

- Penetrates deeply to protect against air and water – not a topical coating
- Provides a self-cleaning, self-regenerating, air-purifying surface that removes nitrogen oxides (NOx) volatile organic compounds (VOCs) and other airborne pollutants from the atmosphere for the life of the structure
- Captures and removes up to 60% of toxic airborne vehicular emissions
- Creates a quick-drying super-hydrophilic surface
- Prevents stripping and raveling of the aggregate
- Reduces long-term pavement maintenance costs by extending the life of new and existing asphalt pavements:
  - Increases the durability of the top portion of new asphalt pavements
  - Improves the ductility and flexibility of the top portion of aging asphalt pavements
- Will not obliterate striping and other markings
- Supports NAAQS compliance

### How It Works

A.R.A.-1 Ti PlusTi asphalt rejuvenator/sealer uses Maltene Replacement Technology to restore the reactive components that asphalt

pavements lose due to hot-plant operations and the aging process. The emulsion uses Photo Catalytic Technology (PCT) to deliver TiO<sub>2</sub> deep into the asphalt surface, leaving behind a photo catalytic surface layer that removes NOx, volatile organic compounds (VOCs) and other airborne pollutants from the atmosphere for the life of the pavement. As weather and traffic wear the surface layers of pavements, deeper layers of TiO<sub>2</sub> are exposed at the surface in a self-generating process of air purification.

### How to Apply

#### Temperature

Apply only when ambient temperature is expected to remain at or above 40°F during application and for the next 12 hours.

#### Surface Preparation

Surface must be dry with no threat of rain within 4 hours of application.

Field testing shall be performed prior to application to determine the maximum amount of material that the pavement can absorb within a 20 minute period. Contractor shall apply various test strips ranging in length from 100-150 ft. using different rates, noting the time it takes for total absorption to occur without surface residues remaining.

#### Application Method

PlusTi asphalt rejuvenator/sealer must be applied by an approved applicator using a computerized distributor truck cleaned of all other materials to prevent contamination.

Apply uniformly to all surfaces. Where grades / elevations are prone to excessive runoff, multiple applications may be required; successive applications must be made as soon as complete penetration of previous applications has occurred.

A light application of dry sand or rock dust shall be applied to all treated pavement after absorption and prior to reopening to traffic; if spills or misapplication occur, a heavier application may be required. The sand or rock dust should be removed within 24 hours.

(continued)

## Application Rate

- For new asphalt, recommended rate between 0.04 and 0.08 gallons per square yard (GSY)
- For old asphalt, recommended rate up to 0.15 GSY

## Other Considerations

Treated sections must be closed and free from traffic until **PlusTi** treatment with subsequent sand or rock dust application is complete. Traffic control shall be conducted in compliance with all local, state and federal requirements.

## Limited Warranty

Pavement Technology, Inc. (PTI) warrants its products to be of the highest quality. Refund of purchase price or replacement of product shall constitute the limit of PTI's liability. PTI makes no other warranties, express or implied, with respect to the products or any service and disclaims all other warranties, including any warranty of merchantability and fitness for particular purpose. This limited warranty may not be modified by reps of PTI, its distributors or dealers.

## Specifications/Testing<sup>1</sup>

Property	Test Method	Requirements
<b>Air Pollution Reduction</b>		
Titanium dioxide (TiO <sub>2</sub> )		Min. 2.0%
<b>Emulsion</b>		
Residue, %w <sup>2</sup>	ASTM D-244 (Mod)	Min. 55, Max. 60
Miscibility <sup>3</sup>	ASTM D-244 (Mod)	No Coagulation
Particle Charge	ASTM D-244	Positive
<b>Residue from Distillation</b>		
Flash Point, COC °C	ASTM D-92	Min. 196
Viscosity @ 60°C, cSt	ASTM D-445	Min. 100, Max. 200
Asphaltenes, %w	ASTM D-2006-70	Max. 1.0
Maltene Distribution Ratio (PC+A <sub>1</sub> ) / (S+A <sub>2</sub> ) <sup>4</sup>	ASTM D-2006-70	Min. 0.3, Max. 0.6
PC/S Ratio <sup>5</sup>	ASTM D-2006-70	Min. 0.5
Saturated Hydrocarbons	ASTM D-2006-70	Min. 21, Max. 28
Percent Light Transmittance <sup>6</sup>	D&D Emulsions	Max. 30
<b>Polymer</b>		
Charge	Positive	0.5%
<b>Property</b>		
		<b>Description</b>
Monomer Ratio, Butadiene/Styrene	76/24	
Solids Content, %w	63	
Coagulum on 80 mesh screen (max. %w)	0.1	
Mooney Viscosity of Polymer (ML 4 @ 212°F) min.	100	
PH of Polymer	5.0	

## NOx Reduction Efficiency<sup>7</sup>

Compound	Control Sample	0.16 kg/m2	0.21 kg/m2	0.26 kg/m2	0.31 kg/m2	0.36 kg/m2
A.R.A.-1 Ti	4.12	52.78	58.61	61.12	53.44	48.26

<sup>1</sup> The Texas A&M Transportation Institute, using samples of A.R.A.-1 Ti rejuvenating seal (**PlusTi** asphalt rejuvenator/sealer), studied the application of this Ti-enhanced emulsion to asphalt pavement surfaces to impart air pollution remediation properties. The test program on specimens yielded data to assess the effects of the application rate and the carrier on the effectiveness of the photo catalytic reaction. To understand the proper application rate for asphalt specimens, the NOx removal efficiency was measured with A.R.A.-1 Ti compounds at five different application rates as indicated in the chart below. The NOx reduction efficiency of A.R.A.-1 Ti rejuvenating seal ranged from 48.26 to 61.12 percent; the effectiveness of the treatment was not linear. The NOx reduction efficiency of the control sample was negligible.

<sup>2</sup> ASTM D-244 Evaporation Test for percent of residue is calculated by heating 50 gram sample to 149°C (300°F) until foaming ceases, then cooling immediately.

<sup>3</sup> Test procedure identical with ASTM D-244 except that .02 Normal Calcium Chloride solution shall be used in place of distilled water.

<sup>4</sup> PC = Polar compounds; A<sub>1</sub> = First Acidifins; A<sub>2</sub> = Second Acidifins; S = Saturated Hydrocarbons

<sup>5</sup> Chemical composition by ASTM D-2006-70

<sup>6</sup> Light Transmittance minimum of 30 without the complete test method shown.

<sup>7</sup> Laboratory Investigation of the Effect of TiO<sub>2</sub> Topical Treatments on Asphalt Specimens (Phase I) - Texas A&M Transportation Institute, September 2018.

## Safety Guidelines

Contractors shall follow all stipulated application requirements.

## National Distributor

Pavement Technology, Inc., Westlake, OH

Contact Mike Durante,  
[mdurante@pavetechinc.com](mailto:mdurante@pavetechinc.com)  
972.974.6037

## Manufacturer

D&D Emulsions, Inc., Mansfield, OH

Patents: US 8,899,871 B2



Made and  
Sourced in  
America

800-333-6309  
[www.pavetechinc.com](http://www.pavetechinc.com)



USGBC® and the  
related logo are  
trademarks owned  
by the U.S. Green  
Building Council®



**Reclamite® Asphalt  
Rejuvenating Agent  
Product Data**





**EMULSIONS**  
**INC.**

Quality Products and Dependable Service Since 1981

Licensed Manufacturer  
Tricor Refining, LLC  
Producers of Golden Bear® Preservation Products

## CERTIFICATE OF COMPLIANCE

TO WHOM IT MAY CONCERN

PRODUCT: RECLAMITE®

IT IS HEREBY CERTIFIED THAT THE ABOVE PRODUCT DESIGNATED HEREON CONFORMS TO THE APPLICABLE SPECIFICATIONS FOR THE PRODUCT SO INDICATED, AND THAT PAVEMENT TECHNOLOGY, INCORPORATED HAS BEEN AN AUTHORIZED APPLICATOR FOR D & D EMULSIONS, INC., AN AUTHORIZED LICENSED MANUFACTURER FOR TRICOR REFINING, LLC.

Date: March 28, 2022

Approved by:

Delbert Dawson Pres.  
Title: President



# TRICOR REFINING, LLC

Producers of GOLDEN BEAR PRESERVATION PRODUCTS

1134 Manor St. • Oildale, CA 93308 / P.O. Box 5877 • Bakersfield, CA 93388  
Phone 661.393.7110 – Fax 661.393.1601

## RECLAMITE® Asphalt Rejuvenating Agent

### Specifications:

Tests	Test Method		Requirements	
	ASTM	AASHTO	Min.	Max.
<b>Tests on Emulsion:</b>				
Viscosity @ 25°C, SFS	D-244	T-59	15	40
Residue, % w <sup>(1)</sup>	D-244 (mod)	T-59 (mod)	60	65
Miscibility Test <sup>(2)</sup>	D-244 (mod)	T-59 (mod)	No Coagulation	
Sieve Test, % w <sup>(3)</sup>	D-244 (Mod)	T-59 (mod)	—	0.1
Particle Charge Test	D-244	T-59	Positive	
Percent Light Transmittance <sup>(4)</sup>	GB	GB	—	30
Cement Mixing	D-244			2.0

<b>Tests on Residue from Distillation</b>				
Flash Point, COC, °C	D-92	T-48	196	—
Viscosity @ 60°C, cSt	D-445	—	100	200
Asphaltenes, %w	D-2006-70	—		0.75
Maltene Distribution Ratio	D-2006-70	—	0.3	0.6
PC + A <sub>1</sub> <sup>(5)</sup>				
S + A <sub>2</sub>				
PC/S Ratio <sup>(5)</sup>	D-2006-70	—	0.5	—
Saturate hydrocarbons, S <sup>(5)</sup>	D-2006-70	—	21	28

<sup>1</sup>ASTM D-244 Evaporation Test for percent of residue is made by heating 50 gram sample to 149°C (300°F) until foaming ceases, then cool immediately and calculate results.

<sup>2</sup>Test procedure identical with ASTM D-244 60 except that .02 Normal Calcium Chloride solution shall be used in place of distilled water.

<sup>3</sup>Test procedure identical with ASTM D-244 60 except that distilled water shall be used in place of two percent sodium oleate solution.

<sup>4</sup>Test procedure is attached.

<sup>5</sup>Chemical composition by ASTM Method D-2006-70:

PC = Polar Compounds,

A<sub>1</sub> = First Acidaffins.

A<sub>2</sub> = Second Acidaffins,

S = Saturated Hydrocarbons.

Note: For gal/ton conversion use 242 gal/ton.

Note: Data presented are typical. Slight variation may occur from lot to lot.

---

# **Evaluation of Seal Coat Runway 16-34 Lajes Field, Azores**

---

by  
**J. E. Pickett**

**Geotechnical Laboratory**  
**U.S. Army Engineer Waterways Experiment Station**  
**P.O. Box 631**  
**Vicksburg, Mississippi**

**March 1983**

**Pavement Technology, Inc.**  
*Preventive Maintenance Specialists*  
**24144 Detroit Rd.**  
**Westlake, OH 44145**  
**1-800-333-6309**





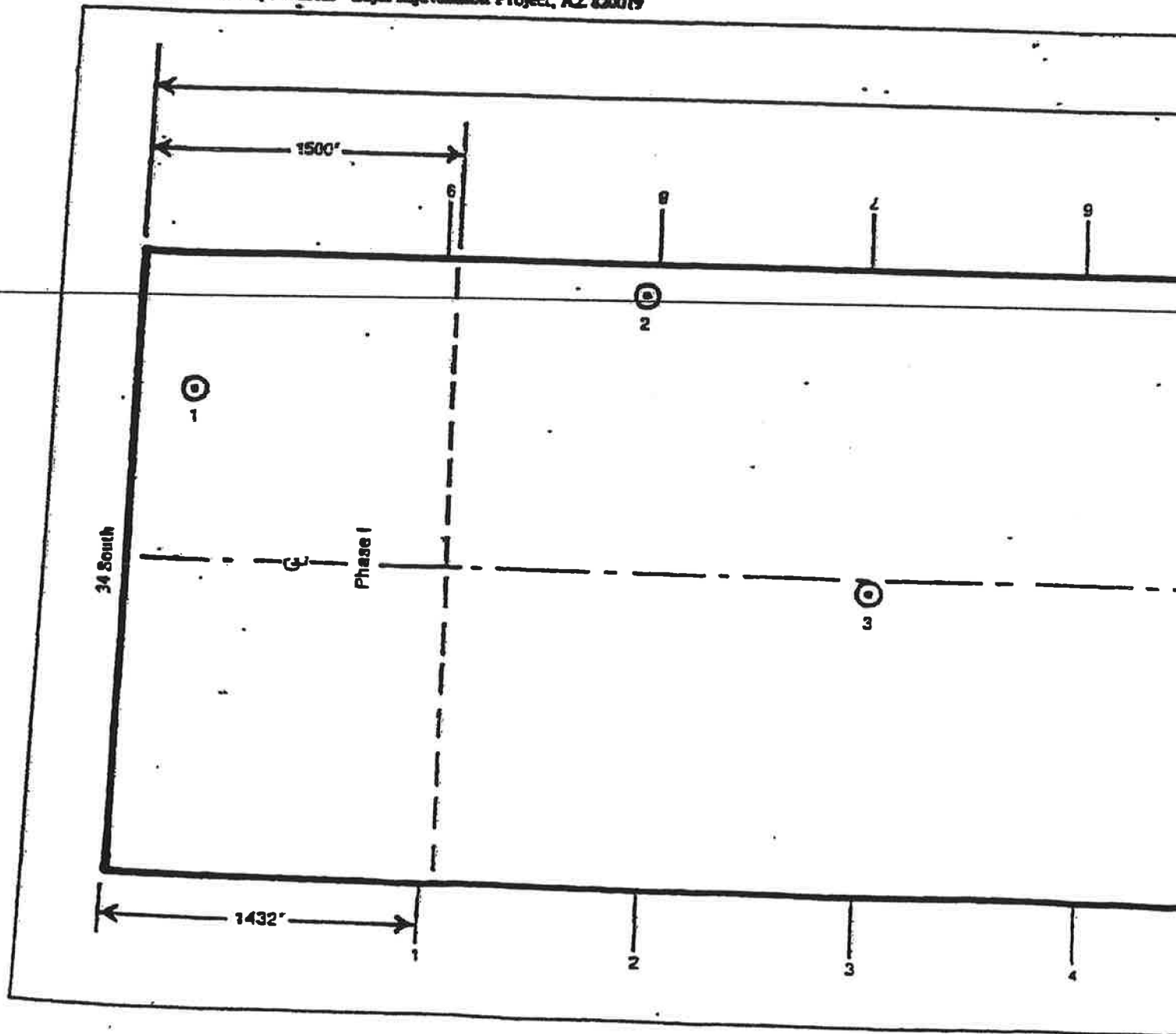
1. In February 1983, the Pavement Systems Division, Geotechnical Laboratory, U.S. Army Engineer Waterways Experiment Station (WES), Vicksburg, Mississippi, was requested by the 1605th Air Base Wing (MAC), Lajes Field, Azores, to provide technical assistance and construction inspection of the rejuvenator project on Runway 16-34, which included sampling and laboratory testing. Treatment of the runway was per-

formed 10-15 March. An excess of Reclamite remaining from projects in 1979 and 1983 was used to treat some parking aprons and taxiways

2. Messrs. Jack E. Pickett and James E. Schoenberger traveled to Lajes Field on 28 February 1983 to take samples before and after treatment and to observe the rejuvenator application.

3. The 10,864-ft runway was divided into sections and treated in three phases. This was

Incl 1 Layout of sampled areas Lajes Rejuvenation Project, AZ 830019



done so the runway could remain open to traffic during treatment. Before treatment, one set of three 6-in. cores were taken at each of eight locations, selected at random throughout the runway, two sets from Phase I and three sets each from Phases II and III. Core locations are shown on Incl 1. After treatment, three additional cores were taken at each location within 2 to 4 ft of the original core locations and in the same construction lane.

The samples were processed by sawing 3/8 in. of material from the upper surface. The asphalt was extracted from this 3/8-in.-thick sample and recovered; untreated samples were processed at the field laboratory at Lajes. The recovered asphalt and treated samples were returned to WES for processing and penetration and viscosity testing. Results of these laboratory tests are summarized in Table I. Test results indicate the rejuvenation of

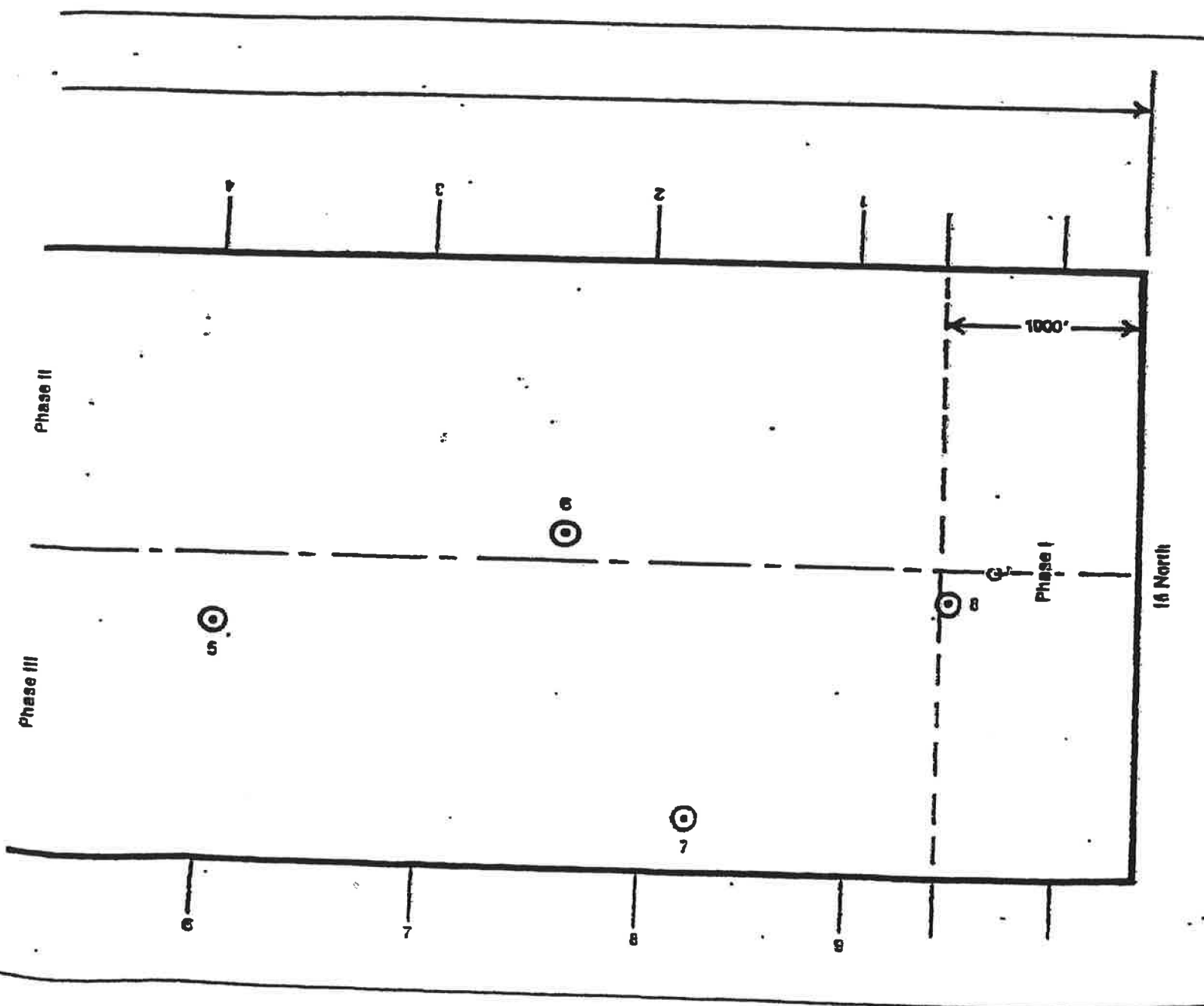


Table I

Lajes Rejuvenator, 1983

Sample Number	Station From South End R/W & C	Penetration 77°F (25°C) 100 g, 5 sec 0.1 mm		Absolute Viscosity 140°F (60°C) 300.0 mm Hg Vacuum, Poises	
		Untreated	Treated	Untreated	Treated
1	2+43, 83.7 ft W	11.00	20.00	401, 351	65, 420
2	23+55, 134.9 ft W	11.00	23.00	449, 520	62, 011
3	34+34, 5.1 ft E	13.00	31.00	242, 293	32, 860
4	52+07, 51.3 ft W	9.00	27.00	1, 852, 362	43, 497
5	64+36, 32.4 ft E	4.00	17.00	2, 774, 367	177, 941
6	80+67, 14.6 ft W	9.00	22.00	863, 971	62, 736
7	86+86, 121.4 ft E	6.00	34.00	1, 263, 880	23, 444
8	99+17, 17 ft E	6.00	29.00	1, 318, 687	41, 392
Average		8.63	25.38	1, 145, 804	63, 663
Change (%)		Penetration	194.00	Viscosity	94.40
			Increase		Decrease

Runway 16-34 was satisfactory. The penetration test shows an increase of approximately 194 percent and the viscosity test shows a decrease of approximately 94 percent. The specification requires the average penetration to be increased by 20 percent and the average viscosity to be decreased by 40 percent.

4. The contractor for the project was Mr. Colin M. Durante, Pavement Technology, Inc., 11260 Berett Road, Cleveland, Ohio 44102. He elected to use Reclamite, a proprietary material manufactured by the Golden Bear Division of Witco Chemical Corporation, Bakersfield, California, as a rejuvenator. Reclamite is a resin-based emulsion that leaves an oily residue and is applied with a bituminous distributor. The Reclamite material was mixed at the job site in a two to one ratio with water, two parts Reclamite to one part water. The Reclamite mixture at ambient temperature (60-70°F) was sprayed onto the runway pavement by using a 1140 gal bituminous distributor equipped with a 10-ft spray bar. Application rates were varied intentionally to avoid excess rejuvenator in areas,

such as recently patched areas, and areas with rubber build-up. Areas outside regular traffic were sprayed heavier, which would not bother air traffic, in case of excess rejuvenator on the surface. Dates of treatment and application rates (gal/yd<sup>2</sup>) are shown in Table II. The remainder of the material was used to spray various taxiways and parking aprons.

Table II

Phase I	
Center 100-ft-wide area	0.053 gal/sq yd
All other areas	0.061 gal/sq yd
Phase II	
From center line runway out 50 ft	0.055 gal/sq yd
All other areas	0.066 gal/sq yd
Phase III	
From center line runway out 50 ft	0.058 gal/sq yd
All other areas	0.074 gal/sq yd

Jack E. Pickett  
Materials Engineering Technician  
Pavement Systems Division  
Geotechnical Laboratory

# Construction seal.



Reclamite was used as a construction seal. For comparison, the lower left area was not treated.



Reclamite was used as a construction seal on the dry areas of this pavement. Untreated areas are still wet from water penetrating the surface.



Reclamite was used as a construction seal on the dry areas of the pavement.

Penetration values of asphalt extracted from cores (New Mexico Highway Department).

Core	Reclamite treated (2 years)	
	Depth	Value
1	Top 1/2"	52
2	Top 1/2"	48
3	Top 1/2"	40
Untreated		
4	Top 1/2"	17
5	Top 1/2"	23
6	Top 1/2"	22

Penetration values of asphalt extracted from cores (Douglas Street, Kern County, Calif.).

Depth	Reclamite treated	
	6 mos.	30 mos.
Top 1/2"	37	25
Untreated		
Top 1/2"	18	13

Penetration values of asphalt on cores taken at intervals over period of time (Day Street, Kern County, Calif.).

Depth	Reclamite treated		
	2 mos.	18 mos.	36 mos.
Top 1/2"	82	48	40
Untreated			
Top 1/2"	23	19	16

Customer: Pavement Technology, Inc. - Colin Durante, John Schlegel

Project: Charleston County, South Carolina - 2015 Reclamite Application

Samples Submitted: Sixteen core samples (8 untreated and 8 treated with RECLAMITE®) identified as:

Forest Trail, Halsey Boulevard, Patterson Avenue, South Rhett Avenue, Shadowmoss Parkway, Algon Quin Road, Queen Street, Wingo Way

**Requested Testing:**

Determine the Dynamic Shear Rheological properties at 60°C of the recovered asphalt binder from the top 3/8-inch layer of each core. These properties include viscosity, phase angle, complex, elastic, and viscous moduli.

**Summary of Testing:**

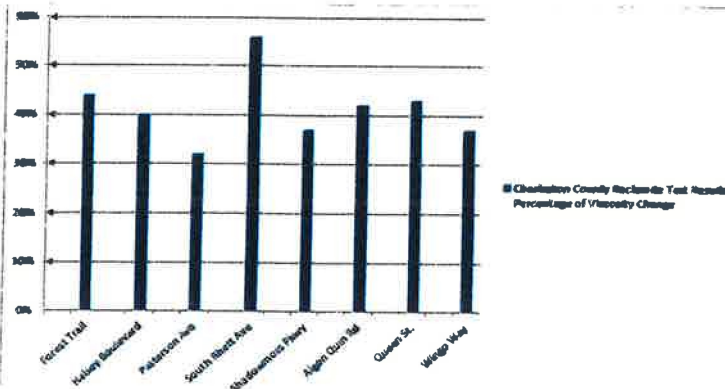
The top 3/8-inch of each core was removed for testing. The asphalt was extracted and recovered as prescribed by California Test Method 365. Viscosity and phase angle, as well as, complex, elastic, and viscous moduli were determined on the recovered asphalt binder using Dynamic Shear Rheology as prescribed by AASHTO T315. Test results are reported by Table I.

Sample Identification	Viscosity 60°C, Poise	Phase Angle, °	MODULUS, 60°C, Pa		
			Complex	Elastic	Viscous
Forest Trail					
Untreated	110430	57.8	110720	59055	93653
Treated	61394	68.9	61556	22166	57427
	44% decrease				
Halsey Boulevard					
Untreated	96417	63.8	96672	39579	80190
Treated	57450	69.1	57601	20972	53003
	40% decrease				
Patterson Avenue					
Untreated	108930	65.5	109220	45355	99359
Treated	74116	67.5	74311	20457	68646
	32% decrease				
South Rhett Avenue					
Untreated	87271	66.9	87501	34302	80498
Treated	38907	70.8	38969	12787	36740
	55% decrease				
Shadowmoss Parkway					
Untreated	85824	67.5	86024	37873	80729
Treated	53725	69.6	53892	23267	49505
	37% decrease				
Algon Quin Road					
Untreated	102100	64.7	102370	43770	92539
Treated	58971	68.4	59126	21781	54960
	42% decrease				
Queen Street					
Untreated	55747	59.9	55867	33013	49677
Treated	32020	70.2	32150	17667	29074
	42% decrease				
Wingo Way					
Untreated	60464	68.2	60624	22522	56285
Treated	37862	70.1	37962	18947	32896
	37% decrease				

Charleston County, South Carolina

Reclamite Application 2015

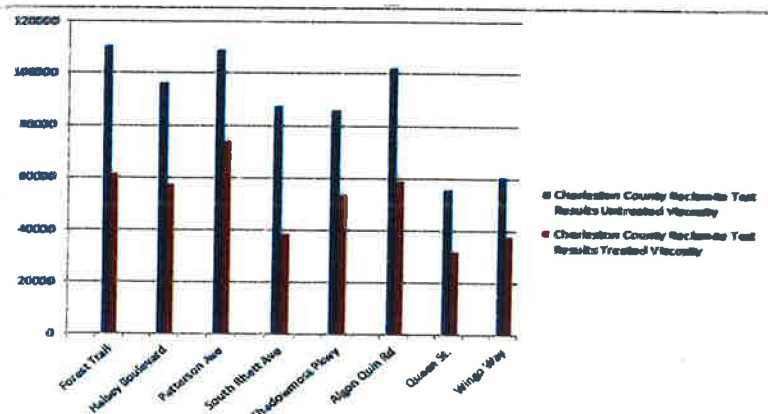
Change in Viscosity Results



Charleston County, South Carolina

Reclamite Application 2015

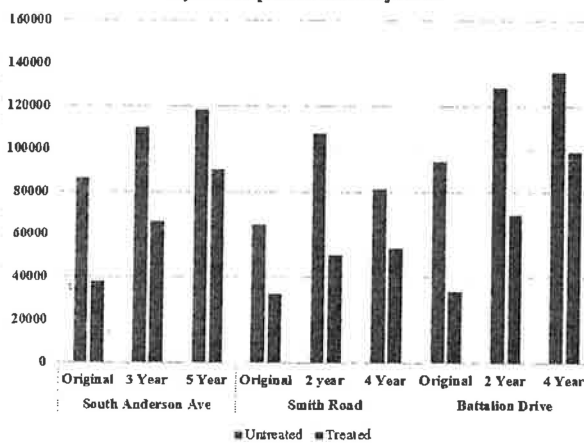
Viscosity Test Results Control vs. Treated



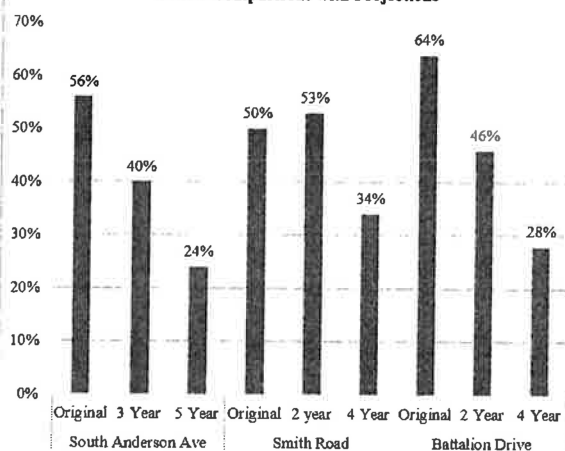


Sample Identification	Viscosity 60° C, Poises		
	Original	3 Year	5 Year
<b>South Anderson Avenue</b>			
Untreated	86177	109950	118490
Treated	38220	66424	90198
Percentage Decrease	56%	40%	24%
	Original	2 Year	4 Year
<b>Smith Road</b>			
Untreated	64993	107220	81289
Treated	32426	50643	53746
Percentage Decrease	50%	53%	34%
	Original	2 Year	4 Year
<b>Battalion Drive</b>			
Untreated	94533	128750	136340
Treated	33743	69437	98896
Percentage Decrease	64%	46%	28%

**Charleston County, SC**  
**Viscosity Test Results Control Vs. Treated**  
 5 year Comparison with Projections



**Charleston County, SC**  
**Decrease in Viscosity (by Percentage)**  
 5 Year Comparisons with Projections



# Key Employees'

## Resumes & Experience Records



# **Pavement Technology, Inc.**

24144 Detroit Rd.  
Westlake, Ohio 44145

Phone: 800-333-6309 440-892-1895  
Fax: 440-892-0953

## **Experience Outline**

### **President/General Manager – Colin Durante**

#### **Construction Operations Education/Training:**

Ohio University  
Civil Engineering  
**1960-1964**

Registered Professional Surveyor  
**1973 to present**

#### **Employment History:**

WVH and Associates  
General Civil Design & Survey Supervision  
**1964-1972**

Pavement Technology, Inc.  
President/General Manager  
**1972-Present**

#### **Work Experience:**

City, County, State, and Military Projects in Pavement Maintenance and Recycling

#### **Professional Affiliations:**

American Society of Highway Engineers  
American Public Works Association  
Northern Ohio Service Directors Association  
Street Maintenance & Sanitation Officers of Ohio

# **Pavement Technology, Inc.**

24144 Detroit Rd.  
Westlake, Ohio 44145

Phone: 800-333-6309 440-892-1895  
Fax: 440-892-0953

## **Experience Outline**

### **General Superintendent / Vice President – John J. Schlegel**

- |                |  |
|----------------|--|
| 1977 - 1983    | General laborer/driver on rejuvenating and recycling projects for Pavement Technology, Inc.                            |
| 1983 – 1988    | General foreman in charge of rejuvenating agent application, crack filling, and other miscellaneous construction work. |
| 1988 – 1991    | Construction Manager in charge of all crew scheduling, equipment maintenance, and general construction projects.       |
| 1991 – Present | General Superintendent / Vice President in charge of all construction operations.                                      |

# **PAVEMENT TECHNOLOGY INC.**

24144 DETROIT ROAD  
WESTLAKE, OHIO 44145  
(440) 892-1895  
(800) 333-6309  
FAX (440) 892-0953

Asphalt Recycling & Preventive Maintenance Specialists

## **Experience Outline**

### **Operations and Fleet Manager – Michael Faustini**

2003 – 2018      Fleet Owner/Operator – Faustini Trucking Inc., Tampa, Florida

- Interviewing, hiring/firing of staff, payroll, log audits, DOT, safety maintenance on equipment, purchasing of equipment, packing, loading/unloading, driving, and sales.
- In 2018 the fleet was sold.

2018 – Present      Pavement Technology, Inc., Westlake, Ohio

- General laborer/driver – rejuvenating agents and crack sealing roadways
- General supervisor in charge of rejuvenating agent application, crack sealing and other miscellaneous construction work
- Fleet Manager in charge of all repairs and scheduling repairs for all trucks and equipment
- Operations and Fleet Manager – in charge of scheduling and day to day operations.
- ATSSA Flagger Course
- Advanced TTC - Florida Department of Transportation

# PAVEMENT TECHNOLOGY INC.

24144 DETROIT ROAD  
WESTLAKE, OHIO 44145  
(440) 892-1895  
(800) 333-6309  
FAX (440) 892-0953

Asphalt Recycling & Preventive Maintenance Specialists

## KEY EMPLOYEES

### Foremen, Supervisors & Management

Individual's Name	Title	Employed by PTI Since
David Baker II	Supervisor	2009
Thomas Donegan III	Asst. Supervisor	2013
Charles McNamee, Jr.	Supervisor	1998
Norman Sabol	Supervisor	2009
Jeffery Mosby	Supervisor	2000
Kedrick Faison	Supervisor	2019
Terronce Pugh	Supervisor	2018
Mark Young	Field Operations Manager	2018
Mike Faustini	Southern Operations Mgr.	2018
Bruce Noble	Assistant Supervisor	2010

### Drivers & Laborers

Individual's Name	Title	Years & Type of Construction Experience
Danny Bolin	Driver	2009
Tradell Huntington	Driver	2011
David Kratky	Driver	1992
Kevin Wilson, Jr.	Driver	2013
Matthew Davis	Driver	2009
David Neff	Laborer	2016
Eric Parson	Driver	2013
Jack Shane	Driver	2010
Javier Torres	Driver	2019
Joshua Lewis	Driver	2021
Al Winston	Driver	2015
Willie Wilson	Driver	2018

# Asphalt Rejuvenation Previous Experience Record

# **Pavement Technology, Inc.**

24144 Detroit Rd.  
Westlake, Ohio 44145

Phone: (800) 333-6309 (440) 892-1895  
Fax: (440) 892-0953

## **Previous Experience Record Reclamite® Asphalt Rejuvenating Agent & A.R.A.-1 Ti® Asphalt Rejuvenator/Sealer**

<b><u>City and Contact</u></b>	<b><u>Project Information</u></b>	<b><u>Using Reclamite® Since</u></b>
St. Johns County 2740 Industry Center Road St. Augustine, FL 32084 Tommy Mashburn P: 904-209-0184 tmashburn@sjcfl.us	2021 Rejuvenation 380,324 sq. yds. \$368,910.40 Completed March, 2022	2003
City of Raleigh 2550 Westinghouse Boulevard Raleigh, NC 27602 Steve Halsey P: 919-996-6446 steven.halsey@raleighnc.gov	2022 Asphalt Rejuvenating Service 157,442 sq. yds. \$307,012.00 Completed August, 2022	2018
Polk County 3000 Sheffield Road Bartow, FL 33830 Austin Potts P: 865-535-2221 austinpotts@polk-county.net	2022 Rejuvenation 704,679 sq. yds. \$618,080.36 Completed April, 2022	2015
City of Orlando 400 S. Orange Ave. Orlando, FL 32801 Howard Elkin P: 407-246-2289 howard.elkin@cityoforlando.net	2021 Rejuvenation 511,575 sq. yds. \$470,649.00 Completed December, 2022	2000



City of Palm Bay 120 Malabar Road SE Palm Bay, FL 32907 Frank Watanabe P: 321-409-6341 frank.watanabe@palmbayflorida.org	2021 Pavement Rejuvenation 1,035,815 sq. yds. \$1,004,740.94 Completed February, 2022	2016
---	--	------

City of Plantation 400 N.W. 73 <sup>rd</sup> Avenue Plantation, FL 33317 Steve Rodgers P: 954-797-2200 srodgers@plantation.org	2022 Rejuvenation 318,703 sq. yds. \$302,169.35 Completed September, 2022	2001
---	--	------

# Company EEO/AA Policy Statement

## **Equal Employment Opportunity / Affirmative Action (EEO/AA) Policy Statement**

This statement is to reaffirm Pavement Technology Inc.'s policy on providing Equal Employment Opportunity to all employees and applicants for employment in accordance with all applicable Equal Employment Opportunity / Affirmative Action laws, directives, and regulations of Federal, State, and Local governing bodies or agencies thereof.

Pavement Technology, Inc. will not discriminate against any employee or applicant for employment because of race, color, sex, national origin, sexual orientation, age, handicap, marital status, familial status, or religion.

Pavement Technology, Inc. will take Affirmative Action to ensure that all employment practices are free of such discrimination. Such employment practices include, but are not limited to, the following: hiring, upgrading demotion, transfers, recruitment or recruitment advertising, selection layoff disciplinary action, termination, rates of pay or other forms of compensation, and selection for training, including apprenticeship.

Pavement Technology, Inc. prohibits the harassment of any employee or job applicant on the basis of their protected class status.

Pavement Technology, Inc. will commit the necessary time and resources, both financial and human, to achieve the goals of Equal Employment Opportunity and Affirmative Action.

Pavement Technology, Inc. will evaluate the performance of its management and supervisory personnel on the basis of their involvement in achieving these Affirmative Action objectives as well as other established criteria. Any employee of this Company or subcontractors to this Company who do not comply with Equal Employment Opportunity Policies and Procedures set forth in this Statement and plan will be subject to disciplinary action. Any subcontractor not complying with all applicable Equal Employment Opportunity / Affirmative Action laws, directives, and regulations of the Federal, State, and Local governing bodies or agencies thereof, will be subject to appropriate legal sanctions.

Pavement Technology, Inc. has appointed Susan J. Durante as EEO Coordinator to manage our Equal Employment Opportunity Program. The responsibilities will include monitoring all Equal Employment Opportunity activities and reporting the effectiveness of this Affirmative Action Program, as required by Federal, State, and Local agencies. If any employee or applicant for employment believes he/she has been discriminated against, please contact the EEO Coordinator.

Signature: \_\_\_\_\_

Susan J. Durante, EEO Coordinator

Date: \_\_\_\_\_

1/27/2023

## PROPOSED SUBCONTRACTORS FORM

Name of Bidder: Pavement Technology, Inc.

**This form is for all Subcontractors being utilized on this project.**

Name of Contractor: N/A

Address: \_\_\_\_\_

Scope of Work to be Performed: \_\_\_\_\_

Total \$ Value: \$ \_\_\_\_\_ % of Total BID/RFP: \_\_\_\_\_ %

Name of Contractor: \_\_\_\_\_

Address: \_\_\_\_\_

Scope of Work to be Performed: \_\_\_\_\_

Total \$ Value: \$ \_\_\_\_\_ % of Total BID/RFP: \_\_\_\_\_ %

Name of Contractor: \_\_\_\_\_

Address: \_\_\_\_\_

Scope of Work to be Performed: \_\_\_\_\_

Total \$ Value: \$ \_\_\_\_\_ % of Total BID/RFP: \_\_\_\_\_ %

Name of Contractor: \_\_\_\_\_

Address: \_\_\_\_\_

Scope of Work to be Performed: \_\_\_\_\_

Total \$ Value: \$ \_\_\_\_\_ % of Total BID/RFP: \_\_\_\_\_ %

Name of Contractor: \_\_\_\_\_

Address: \_\_\_\_\_

Scope of Work to be Performed: \_\_\_\_\_

Total \$ Value: \$ \_\_\_\_\_ % of Total BID/RFP: \_\_\_\_\_ %

If additional space is required for your subcontractor listing, make copies of this form and submit with you bid package.

*This page must be completed and uploaded to DemandStar.com with your Submittal.*

## RESPONSIBLE AGENT FORM

RESPONSIBLE AGENT: Debbie Cancelliere

ADDRESS: 24144 Detroit Road, Westlake, OH 44145

PHONE NO.: 440-892-1895

FAX NO.: 440-892-0953

EMAIL ADDRESS: dcancelliere@pavetechinc.com

ALTERNATE RESPONSIBLE AGENT: Susan Durante

ADDRESS: 24144 Detroit Road, Westlake, OH 44145

PHONE NO.: 440-892-1895

FAX NO.: 440-892-0953

EMAIL ADDRESS: sdurante@pavetechinc.com

**Pavement  
Technology,  
Inc.**

24144 Detroit Rd.  
Westlake, Ohio 44145

Phone: 800-333-6309 440-892-1895  
Fax: 440-892-0953

**CORPORATE RESOLUTION**

Pavement Technology, Inc.

I hereby certify that I am the duly elected and acting Secretary of Pavement Technology, Inc., a corporation duly organized and existing under the laws of the State of Ohio; that on this 2<sup>nd</sup> day of January, 2007, the board of directors of said Corporation authorized and approved the Vice President of said corporation to execute any proposals and contracts for and in behalf of said corporation; that said authority is not contrary to any provision in the articles of incorporation or code of regulations or code of bylaws of said corporation; that said authority has not been rescinded or modified and that John J. Schlegel is the duly elected and acting Vice President of said corporation.

IN WITNESS WHEREOF, I have hereunto subscribed my name on this 2<sup>nd</sup> day of January, 2007.



Susan J. Durante, Secretary/Treasurer



## ADDENDUM NO. 1



Date: January 27, 2023

Bid Date: January 30, 2023  
at 3:00 P.M. (Local Time)

Bid Name Pavement Management (Preservation & Surfacing)  
Continuing Services

Bid No.: PWDA-230027-DH

NOTE: This Addendum has been issued only to the holders of record of the specifications.

The original Specifications remain in full force and effect except as revised by the following changes which shall take precedence over anything to the contrary:

1. Any questions shall be submitted in writing to the City of Gainesville Purchasing Division by 3:00 p.m. (local time), January 23, 2023. Questions may be submitted as follows:  
Email: [holderds@gainesville.org](mailto:holderds@gainesville.org)
2. Please find attached:
  - a) Copy of the code of silence information (Financial Procedures Manual Section 41-524 Prohibition of Lobbying in Procurement Matters)).

The following are answers/clarifications to questions received:

3. Question: On the reference ITB, page 77 of 82, at the Living Wage Compliance section, a Certification of Compliance with Living Wage is mentioned. Can you please advise me on how a corporation becomes certified if they are already compliant? Is there a Certification form that is available?  
Answer: A Certification form is not required.
4. Question: After reviewing the specs laid out in the bid outline, our product, CPR, exceeds the specified requirements. Attached you will find the information regarding the testing and specifications of CPR Asphalt Rejuvenator. We are extremely interested in the opportunity to provide a bid upon approval from the proper department.  
Answer: The City of Gainesville will accept any asphalt rejuvenation product that meets the full requirements of Section 335-4 of the Technical Specifications posted with this solicitation.

ACKNOWLEDGMENT: Each Proposer shall acknowledge receipt of this Addendum No. 1 by his or her signature below, **and a copy of this Addendum to be returned with proposal.**

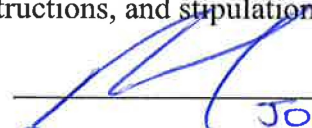
CERTIFICATION BY PROPOSER

The undersigned acknowledges receipt of this Addendum No. 1 and the Proposal submitted is in accordance with information, instructions, and stipulations set forth herein.

PROPOSER:

BY:

DATE:

  
\_\_\_\_\_  
John Schlegel, Vice President  
Pavement Technology, Inc.  
\_\_\_\_\_  
1/27/2023  
\_\_\_\_\_

# CITY OF \_\_\_\_\_ FINANCIAL SERVICES GAINESVILLE PROCEDURES MANUAL

## **41-524      Prohibition of Lobbying in Procurement Matters**

Except as expressly set forth in Resolution 170116, Section 9, during the Cone of Silence as defined herein no person may lobby, on behalf of a competing party in a particular procurement process, City Officials or employees, except the Procurement Division or the procurement designated staff contact person. Violation of this provision shall result in disqualification of the party on whose behalf the lobbying occurred.

Cone of Silence period means the period between the issue date which allows for immediate submittals to the City of Gainesville Procurement Division in response to an invitation to bid, or a request for proposal, or qualifications, or information, or an invitation to negotiate, as applicable, and the time that City Officials or the Procurement Division, or City Department awards the contract.

Lobbying means when a person seeks to influence or attempt to influence City Officials or employees with respect to a decision of the City, except as authorized by procurement procedures.