



**Photo 282. View of Mesic: Planted Pine-Mesic Pine Flatwoods as seen looking south from GPS location 5844 (Frames 2014-2015; 09/04/15).**



**Photo 283. View of Wetland: Mixed Hardwood Swamp as seen looking east from GPS location 5854 (Frames 2016-2017; 09/04/15).**





**Photo 284. View of Mesic: Planted Pine-Mesic Pine Flatwoods as seen looking southeast from GPS location 5877 (Frames 2020-2021; 09/04/15).**



**Photo 285. View of Physical Feature: Culvert as seen looking east from GPS location 5885 (Frame 2022; 09/04/15).**





**Photo 286. View of Physical Feature: Culvert as seen looking southeast from GPS location 5886 (Frame 2023; 09/04/15).**



**Photo 287. View of Hydric: Planted Pine Flatwoods as seen looking southwest from GPS location 5930 (Frames 2024-2025; 09/08/15).**





**Photo 288. View of Physical Feature Boundary: Wetland Delineation Flagging within the Wetland: Planted Pine-Marsh as seen looking west from GPS location 5955 (Frame 2026; 09/08/15).**



**Photo 289. View of Physical Feature Boundary: Wetland Delineation Flagging within the Wetland: Planted Pine-Marsh as seen looking northwest from GPS location 5955 (Frames 2027-2028; 09/08/15).**





**Photo 290. View of Mesic: Planted Pine-Mesic Pine Flatwoods as seen looking east from GPS location 5959 (Frames 2029-2030; 09/08/15).**



**Photo 291. View of Wetland: Planted Pine-Marsh as seen looking south-southwest from GPS location 5964 (Frames 2031-2032; 09/08/15).**





**Photo 292. View of Wetland: Planted Pine-Marsh as seen looking northwest from GPS location 5973 (Frames 2037-2038; 09/08/15).**



**Photo 293. View of Wetland: Planted Pine-Marsh as seen looking northeast from GPS location 5997 (Frames 2043-2044; 09/08/15).**





**Photo 294. View of Wetland: Planted Pine-Marsh as seen looking southwest from GPS location 6015 (Frames 2045-2046; 09/08/15).**



**Photo 295. View of Physical Feature: Culvert as seen looking north from GPS location 6070 (Frame 2047; 09/08/15).**





**Photo 296. View of Wetland: Planted Pine-Marsh as seen looking east from GPS location 6104 (Frames 2048-2049; 09/08/15).**



**Photo 297. View of Wetland: Planted Pine-Marsh as seen looking north from GPS 6112 (Frames 2050-2051; 09/08/15).**





**Photo 298. View of Mesic: Planted Pine-Mesic Pine Flatwoods as seen looking northeast from GPS location 6118 (Frames 2052-2053; 09/08/15).**



**Photo 299. View of Mesic: Planted Pine-Mesic Pine Flatwoods as seen looking west from GPS location 6182 (Frames 2054-2055; 09/08/15).**





**Photo 300. View of Wetland: Natural Flow-way as seen looking east from GPS location 6199 (Frames 2056-2057; 09/08/15).**



**Photo 301. View of Wetland: Natural Flow-way as seen looking west from GPS location 6199 (Frames 2058-2059; 09/08/15).**





**Photo 302. View of Wetland: Planted Pine-Marsh as seen looking southeast from GPS location 6221 (Frames 2060-2061; 09/18/15).**



**Photo 303. View of Mesic: Planted Pine-Mesic Pine Flatwoods as seen looking northeast from GPS location 6263 (Frames 2062-2063; 09/09/15).**





**Photo 304. View of Wetlands: Mixed Hardwood Swamp-Bays-Fetterbush as seen looking north from GPS location 6272 (Frames 2064-2065; 09/09/15).**



**Photo 305. View of Wetlands: Mixed Hardwood Swamp-Bays-Fetterbush as seen looking southwest from GPS location 6272 (Frames 2066-2067; 09/09/15).**





**Photo 306. View of Mesic: Planted Pine-Mesic Pine Flatwoods as seen looking north from GPS location 6337 (Frames 2072-2073; 09/09/15).**



**Photo 307. View of Mesic: Planted Pine-Mesic Pine Flatwoods as seen looking north from GPS location 6340 (Frames 2074-2075; 09/09/15).**





**Photo 308. View of Wetland: Cypress-Mixed Hardwoods-Bays as seen looking west from GPS location 6354 (Frames 2076-2077; 09/09/15).**



**Photo 309. View of Wetlands: Mixed Hardwood Swamp-Bays-Fetterbush as seen looking northwest from GPS location 6375 (Frames 2078-2079; 09/09/15).**





**Photo 310. View of Wetlands: Mixed Hardwood Swamp-Bays-Fetterbush as seen looking west from GPS location 6394 (Frames 2080-2081; 09/09/15).**



**Photo 311. View of Wetlands: Mixed Hardwood Swamp-Bays-Fetterbush as seen looking east from GPS location 6394 (Frames 2082-2083; 09/09/15).**





**Photo 312. View of Mesic: Planted Pine-Mesic Pine Flatwoods as seen looking north from GPS location 6462 (Frames 2084-2085; 09/09/15).**



**Photo 313. View of Wetland: Planted Pine-Marsh as seen looking north from GPS location 6513 (Frames 2086-2087; 09/09/15).**





**Photo 314. View of Wetland: Planted Pine-Mixed Hardwoods as seen looking east from GPS location 6545 (Frames 2088-2089; 09/09/15).**



**Photo 315. View of Wetland: Planted Pine-Mixed Hardwoods as seen looking west from GPS location 6545 (Frames 2090-2091; 09/09/15).**





**Photo 316. View of Mesic: Planted Pine-Mesic Pine Flatwoods as seen looking east from GPS location 6553 (Frames 2092-2093; 09/09/15).**



**Photo 317. View of Hydric: Planted Pine Flatwoods as seen looking south from GPS location 6570 (Frames 2094-2095; 09/10/15).**





**Photo 318. View of Wetland: Planted Pine-Marsh as seen looking west from GPS location 6574 (Frames 2096-2097; 09/10/15).**



**Photo 319. View of Wetland: Planted Pine-Marsh as seen looking south from GPS location 6574 (Frames 2098-2099; 09/10/15).**





**Photo 320. View of Wetland: Planted Pine-Marsh as seen looking north from GPS location 6574 (Frames 2100-2101; 09/10/15).**



**Photo 321. View of Transitional: Planted Pine Flatwoods as seen looking southeast from GPS location 6591 (Frames 2102-2103; 09/10/15).**





**Photo 322. View of Surface Water: Excavated Creek in Wetland as seen looking south from GPS location 6613 (Frames 2104-2105; 09/10/15).**



**Photo 323. View of Wetland: Marsh as seen looking north from GPS location 6630 (Frames 2106-2107; 09/10/15).**





**Photo 324. View of Wetland: Marsh as seen looking east from GPS location 6630 (Frames 2108-2109; 09/10/15).**



**Photo 325. View of Wetland: Planted Pine-Marsh as seen looking north from GPS location 6634 (Frame 2110; 09/10/15).**





**Photo 326. View of Wetland: Planted Pine-Marsh as seen looking east from GPS location 6634 (Frame 2111; 09/10/15).**



**Photo 327. View of Wetland: Planted Pine-Marsh as seen looking south from GPS location 6634 (Frame 2112; 09/10/15).**





**Photo 328. View of Wetland: Planted Pine-Marsh as seen looking west from GPS location 6634 (Frame 2113; 09/10/15).**



**Photo 329. View of Wetland: Planted Pine-Marsh as seen looking southeast from GPS location 6637 (Frames 2114-2115; 09/10/15).**





**Photo 330. View of Wetland: Planted Pine-Marsh as seen looking southeast from GPS location 6657 (Frames 2116-2117; 09/10/15).**



**Photo 331. View of Wetland: Marsh as seen looking north from GPS location 6670 (Frames 2118-2119; 09/10/15).**





**Photo 332. View of Wetland: Marsh as seen looking south from GPS location 6670 (Frames 2120-2121; 09/10/15).**



**Photo 333. View of Wetland: Cypress-Mixed Hardwoods-Bays as seen looking west from GPS location 6723 (Frames 2122-2123; 09/10/15).**





**Photo 334. View of Wetland: Natural Flow-way occurring across the top of the improved forest road as seen looking northwest from GPS location 6758 (Frames 2125-2126; 09/10/15).**



**Photo 335. View of Wetland: Natural Flow-way that occurs across the top of the improved forest road as seen looking east from GPS location 6786 (Frames 2130-2131; 09/11/15).**





**Photo 336. View of Wetland: Mixed Hardwoods-Seepage Slope as seen looking south from GPS location 6793 (Frames 2132-2133; 09/11/15).**



**Photo 337. View of Wetland: Mixed Shrubs & Vines as seen looking north from GPS location 6794 (Frames 2134-2135; 09/11/15).**





**Photo 338. View of Wetland: Planted Pine-Marsh as seen looking south from GPS location 6809 (Frames 2136-2137; 09/11/15).**



**Photo 339. View of Wetland: Cypress-Mixed Hardwoods-Bays as seen looking west from GPS location 6844 (Frames 2138-2139; 09/11/15).**





**Photo 340. View of Wetland: Natural Flow-way as seen looking northwest from GPS location 6858 (Frame 2140; 09/11/15).**



**Photo 341. View of Wetland: Natural Flow-way as seen looking southeast from GPS location 6858 (Frame 2141; 09/11/15).**





**Photo 342. View of Wetland: Natural Flow-way at GPS location 6862 (Frame 2142; 09/11/15).**



**Photo 343. View of Wetland: Natural Flow-way as seen looking downstream (northwest) from GPS location 6862 (Frame 2143; 09/11/15).**





**Photo 344. View of Mesic: Planted Pine-Mesic Pine Flatwoods as seen looking northwest from GPS location 6891 (Frames 2144-2145; 09/11/15).**



**Photo 345. View of Wetland: Natural Flow-way as seen at GPS location 6893 (Frame 2146; 09/11/15).**





**Photo 346. View of Wetland: Natural Flow-way as seen looking west from GPS location 6893 (Frames 2147-2148; 09/11/15).**



**Photo 347. View of Mesic: Planted Pine-Mesic Pine Flatwoods as seen looking south from GPS location 6911 (Frames 2149-2150; 09/11/15).**





**Photo 348. View of Wetland: Cypress-Mixed Hardwoods-Bays as seen looking north from GPS location 6922 (Frames 2151-2152; 09/11/15).**



**Photo 349. View of Mesic: Planted Pine-Mesic Pine Flatwoods as seen looking north from GPS location 6960 (Frames 2153-2154; 09/11/15).**





**Photo 350. View of Wetland Boundary: Mixed Shrubs & Vines as seen looking northwest from GPS location 6991 (Frames 2155-2156; 09/11/15).**



**Photo 351. View of Transitional: Planted Pine Flatwoods as seen looking north from GPS location 7007 (Frames 2157-2158; 09/11/15).**





**Photo 352. View of Mesic: Planted Pine-Mesic Pine Flatwoods as seen looking southeast from GPS location 7013 (Frames 2159-2160; 09/11/15).**



**Photo 353. View of Mesic: Planted Pine-Mesic Pine Flatwoods as seen looking south from GPS location 7028 (Frames 2161-2162; 09/11/15).**





**Photo 354. View of Wetland: Cypress-Mixed Hardwoods-Bays as seen looking northwest from GPS location 7034 (Frames 2163-2164; 09/11/15).**



**Photo 355. View of Mesic: Planted Pine-Mesic Pine Flatwoods as seen looking north from GPS location 7041 (Frames 2165-2166; 09/11/15).**





**Photo 356. View of Mesic: Planted Pine-Mesic Pine Flatwoods as seen looking northwest from GPS location 7047 (Frames 2167-2168; 09/11/15).**



**Photo 357. View of Ditch Block within ditch located along east boundary of gas line easement as seen looking east from GPS location 7068. Water is pooled to the south at this location (Frames 2169-2170; 09/11/15).**





**Photo 358. View of Wetland: Cypress-Mixed Hardwoods-Bays as seen looking east from GPS location 7086 (Frames 2171-2172; 09/11/15).**



**Photo 359. View of Wetland: Marsh as seen looking west from GPS location 7093 (Frames 2173-2174; 09/11/15).**





**Photo 360. View to south (upstream) of culverts located in Rocky Creek at GPS location 9841 (Frame 7490; 09/15/15).**



**Photo 361. View to south (upstream) of culverts located in Rocky Creek at GPS location 9841 (Frame 7491; 09/15/15).**





**Photo 362. View of downstream area of Rocky Creek south of culverts located at GPS location 7285 (Frame 7492; 09/15/15).**



**Photo 363. View of Wetland: Cypress-Mixed Hardwoods-Bays as seen looking west from GPS location 7304 (Frame 7494; 09/15/15).**





**Photo 364. View of Wetland: Cypress-Mixed Hardwoods-Bays as seen looking west from GPS location 7304 (Frame 7495; 09/15/15).**



**Photo 365. View of Wetland: Mixed Shrubs & Vines as seen looking east from GPS location 7337 (Frame 7496; 09/15/15).**





**Photo 366. View of Wetland: Mixed Shrubs & Vines as seen looking southeast from GPS location 7337 (Frame 7497; 09/15/15).**



**Photo 367. View of Mesic: Planted Pine-Mesic Pine Flatwoods as seen looking northwest from the jurisdiction line located south of GPS location 7338 (Frame 7498; 09/15/15).**





**Photo 368. View of Mesic: Planted Pine-Mesic Pine Flatwoods as seen looking north from GPS location 7340 (Frame 7499; 09/15/15).**



**Photo 369. View of Mesic: Planted Pine-Mesic Pine Flatwoods as seen looking northeast from GPS location 7340 (Frame 7500; 09/15/15).**





**Photo 370. View of Mesic: Planted Pine-Mesic Pine Flatwoods as seen looking west from GPS location 7349 (Frame 7501; 09/15/15).**



**Photo 371. View of Mesic: Planted Pine-Mesic Pine Flatwoods as seen looking northeast from GPS location 7349 (Frame 7502; 09/15/15).**





**Photo 372. View to south of gas line through Wetland: Cypress-Mixed Hardwoods-Bays as seen at culvert location at GPS location 7360 (Frame 7503; 09/15/15).**



**Photo 373. View of Physical Feature: Culvert as seen looking at east end (downstream) of culvert at GPS location 7360 (Frame 7504; 09/15/15).**





**Photo 374. View of Wetland: Cypress-Mixed Hardwoods-Bays from Physical Feature: Culvert as seen looking at west end (upstream) of culvert at GPS location 7360 (Frame 7506; 09/15/15).**



**Photo 375. View of wetland shrubs and marsh area of Wetland: Cypress-Mixed Hardwoods-Bays community from Physical Feature: Culvert as seen looking west (upstream) from GPS location 7360 (Frame 7507; 09/15/15).**





**Photo 376. View of cypress, pine, and disturbed vines and shrubs area of the Wetland: Cypress-Mixed Hardwoods-Bays community located west of Physical Feature: Culvert at GPS location 7360 (Frame 7508; 09/15/15).**



**Photo 377. View of Wetland: Planted Pine-Marsh as seen looking west from GPS location 7372 (Frames 7509-7510; 09/15/15).**





**Photo 378. View of gas line as seen looking south from GPS location 7378 Wetland: Natural Flow-way, which occurs from west to east across top of gas line extending from GPS locations 7375–7380 (Frame 7511; 09/15/15).**



**Photo 379. View of gas line as seen looking north from GPS location 7378 Wetland: Natural Flow-way, which occurs from west to east across top of gas line extending from GPS locations 7375–7380 (Frame 7512 (09/15/15).**





**Photo 380. View of Wetland: Planted Pine-Marsh as seen looking west from GPS location 7387 (Frames 7513-7314; 09/15/15).**



**Photo 381. View of gas line (right) and forest road (left) that accesses property to the east. This photo is taken from GPS location 7403 looking southeast to south. There are several Physical Feature: Culverts at this location that route water north and east through this intersection (Frame 7515; 09/15/15).**





**Photo 382. View of north end of Physical Feature: Culvert that runs north from GPS location 7403 to 7404 and routes water in this direction (Frame 7516; 09/15/15).**



**Photo 383. View to north of gas line as seen from Physical Feature: Culvert at GPS location 7404 (Frame 7517; 09/15/15).**





**Photo 384. View of area at west end of Physical Feature: Culvert located at GPS location 7405. This is upstream area west of gas line (Frame 7518; 09/15/15).**



**Photo 385. View of east area at east end (downstream) of Physical Feature: Culvert located at GPS location 7405. Water flows here from GRU property, north into ditch along gas line, then east into a large wetland area (Frame 7519; 09/15/15).**





**Photo 386. View of flow-way at east end of Physical Feature: Culvert located in gas line right-of-way at GPS location 7421 (Frame 7520; 09/15/15).**



**Photo 387. View of flow-way at west end of Physical Feature: Culvert located in gas line right-of-way at GPS location 7421 (Frame 7521; 09/15/15).**





**Photo 388. View of Physical Feature: Culvert area within gas line right-of-way as seen looking south from GPS location 7421 (Frame 7522; 09/15/15).**



**Photo 389. View of Wetland: Planted Pine Flatwoods as seen looking east from the jurisdictional boundary at GPS location 7430 (Frame 7524; 09/15/15).**





**Photo 390. View of Hydric: Planted Pine Flatwoods as seen looking west from the jurisdictional boundary at GPS location 7430 (Frame 7525; 09/15/15).**



**Photo 391. View of upland as seen looking south from Mesic: Planted Pine-Mesic Pine Flatwoods located at GPS location 7441 (Frame 7526; 09/15/15).**





**Photo 392. View of Hydric: Planted Pine Flatwoods as seen looking west from GPS location 7449 (Frames 7527-7528; 09/15/15).**



**Photo 393. View of Surface Water: Excavated Ditch within Upland within a Transitional: Planted Pine Flatwoods as seen at GPS location 7456 (Frame 7529; 09/15/15).**





**Photo 394. View of Surface Water: Excavated Ditch within Upland within a Transitional: Planted Pine Flatwoods as seen looking north (downstream) from GPS location 7456 Frame 7530 (09/15/15).**



**Photo 395. View of Surface Water: Excavated Ditch within Upland within a Transitional: Planted Pine Flatwoods as seen looking south (upstream) from GPS location 7456 (Frame 7531; 09/15/15).**





**Photo 396. View of boundary between wet flatwoods and transitional flatwoods within the Hydric: Planted Pine Flatwoods community as seen looking east from GPS location 7459 (Frame 7532; 09/15/15).**



**Photo 397. View of Hydric: Planted Pine Flatwoods as seen looking south from GPS location 7470 (Frame 7533; 09/15/15).**





**Photo 398. View of Hydric: Planted Pine Flatwoods as seen looking north from GPS location 7470 (Frame 7534; 09/15/15).**



**Photo 399. View of Physical Feature: Culvert as seen looking north (downstream) from GPS location 7497 (Frame 7535; 09/15/15).**





**Photo 400. View of Physical Feature: Culvert as seen looking south (upstream) from GPS location 7497 (Frame 7536; 09/15/15).**



**Photo 401. View of Hydric: Planted Pine Flatwoods as seen looking northeast from GPS location 7510 (Frame 7537; 09/15/15).**





**Photo 402. View of Hydric: Planted Pine Flatwoods as seen looking east from GPS location 7510 (Frame 7538; 09/15/15).**



**Photo 403. View of Surface Water: Excavated Ditch within Upland-Roadside Ditch within the Mesic: Planted Pine-Mesic Pine Flatwoods community at GPS location 7523 (Frame 7539; 09/15/15).**





**Photo 404. View of Mesic: Planted Pine-Mesic Pine Flatwoods as seen looking north from GPS location 7526 (Frame 7540; 09/15/15).**



**Photo 405. View of Wetland: Planted Pine-Marsh as seen at GPS location 7648 (Frame 7624; 09/17/15).**



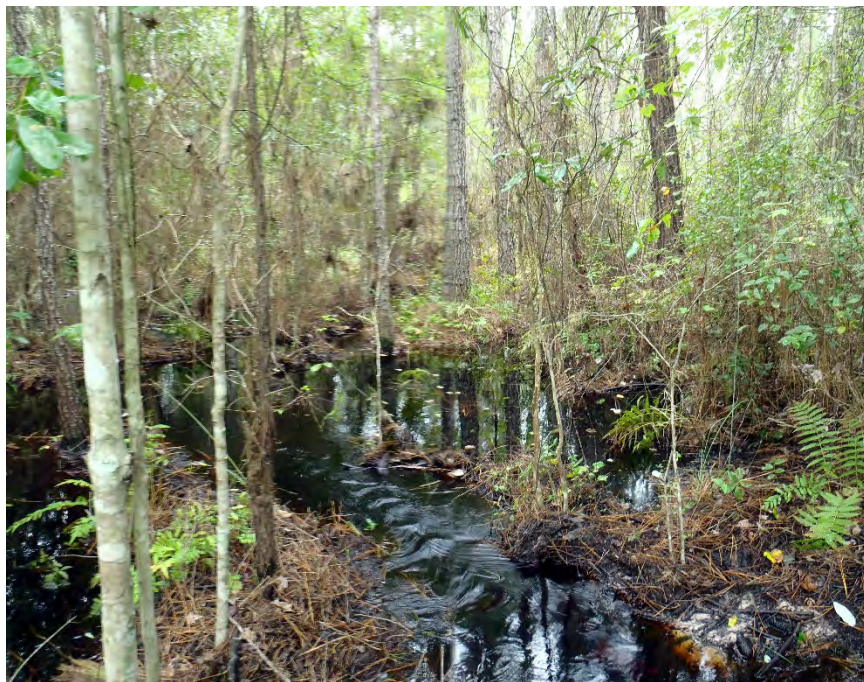


**Photo 406. View of Wetland: Planted Pine-Marsh as seen at GPS location 7649 (Frame 7625; 09/17/15).**



**Photo 407. View of Hydric: Planted Pine Flatwoods as seen at GPS location 7663 (Frame 7626; 09/17/15).**





**Photo 408. View of stream flow into Wetland: Planted Pine-Mixed Hardwoods as seen looking south from GPS location 7754 (Frames 2175-2176; 09/18/15).**



**Photo 409. View of stream inflow into Wetland: Planted Pine-Mixed Hardwoods as seen looking west from GPS location 7754 (Frames 2177-2178; 09/18/15).**





**Photo 410. View of flow-way across top of gas line access road as seen looking south from GPS location 7756. Flow-way extends from GPS location 7756 south to 7757, a distance of 325 ft (Frames 2183-2184; 09/18/15).**



**Photo 411. View of wetland marsh on south side of power line easement as seen looking east from Physical Structure: Culvert located at GPS location 7756 (Frame 2185; 09/18/15).**





**Photo 412. View of wetland marsh located south of power line access road as seen looking west from culvert located at GPS location 7756 (Frame 2186; 09/18/15).**



**Photo 413. View of gas line easement as seen looking north from culvert located at GPS location 7765 (Frames 2179-2180; 09/18/15).**





**Photo 414. View of wetland marsh on north side of power line access road as seen looking east from culvert at GPS location 7765 (Frame 2181; 09/18/15).**



**Photo 415. View of wetland marsh on north side of power line access road as seen looking west from culvert located at GPS location 7765 (Frame 2182; 09/18/15).**





**Photo 416. View of natural flow-way area within Wetland: Mixed Hardwood Swamp as seen looking southeast from GPS location 7804 (Frames 2187-2188; 09/18/15).**



**Photo 417. View of Mesic: Planted Pine-Mesic Pine Flatwoods as seen looking southwest from GPS location 7823 (Frames 2189-2190; 09/18/15).**





**Photo 418. View of Surface Water: Excavated Ditch within Upland as seen looking east from GPS location 7843 (Frame 2191; 09/18/15).**



**Photo 419. View of Surface Water: Excavated Ditch within Upland as seen looking west from GPS location 7843 (Frame 2192; 09/18/15).**





**Photo 420. View of Wetland: Marsh as seen looking southwest from GPS location 7854 (Frames 2193-2194; 09/18/15).**

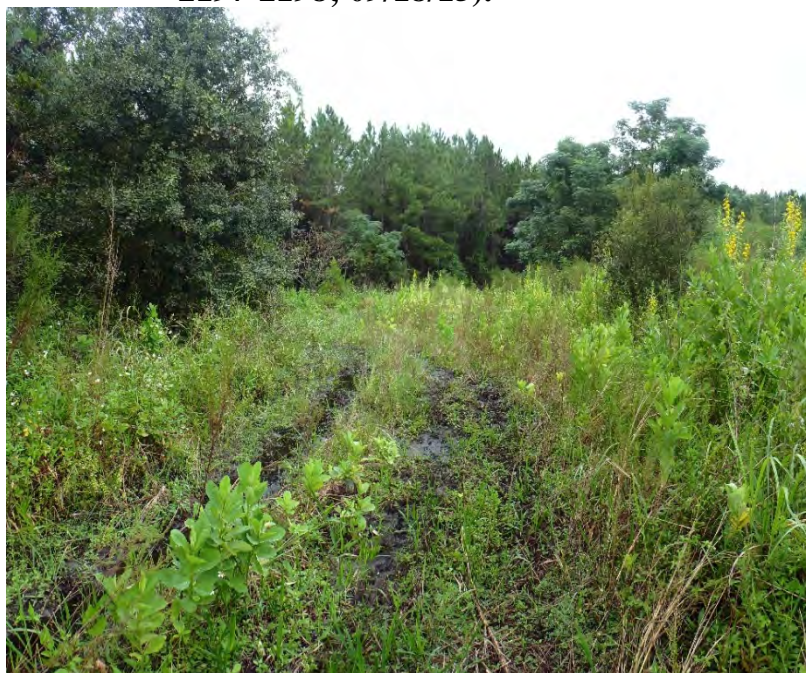


**Photo 421. View of Upland: Oldfield as seen looking east from GPS location 7861 (Frames 2195-2196; 09/18/15).**





**Photo 422. View of Wetland: Marsh as seen looking south from GPS location 7862 (Frames 2197-2198; 09/18/15).**



**Photo 423. View of Wetland: Natural Flow-way as seen looking north from GPS location 7863 (Frames 2199-2200; 09/18/15).**





**Photo 424. View of Wetland: Natural Flow-way as seen looking southwest from GPS location 7945 (Frames 2201-2202; 09/18/15).**



**Photo 425. View of Wetland: Natural Flow-way as seen looking northwest from GPS location 7945 (Frames 2203-2204; 09/18/15).**





**Photo 426. View of Wetland: Natural Flow-way as seen looking southeast from GPS location 7945 (Frames 2205-2206; 09/18/15).**



**Photo 427. View of Wetland: Natural Flow-way as seen looking west from GPS location 7945 (Frames 2207-2208; 09/18/15).**





**Photo 428. View of Hydric: Planted Pine Flatwoods as seen looking south from GPS location 7960 (Frames 2209-2210; 09/18/15).**



**Photo 429. View of Wetland: Cypress-Mixed Hardwoods-Bays as seen looking west from GPS location 7968 (Frames 2211-2212; 09/18/15).**





**Photo 430. View of Mesic: Planted Pine-Mesic Pine Flatwoods as seen looking east from GPS location 8026 (Frames 2213-2214; 09/18/15).**



**Photo 431. View of Hydric: Planted Pine Flatwoods as seen looking northeast from GPS location 8035 (Frames 2217-2218; 09/18/15).**





**Photo 432. View of Wetland: Cypress-Mixed Hardwoods-Bays as seen looking east from GPS location 8037 (Frames 2215-2216; 09/18/15).**



**Photo 433. View of Mesic: Planted Pine-Mesic Pine Flatwoods as seen looking northeast from GPS 8039 (Frames 2219-2220; 09/18/15).**





**Photo 434. View of eroded Physical Feature: Culvert as seen looking east from GPS locations 8099-8100 (Frame 7646; 09/29/15).**



**Photo 435. View of eroded Physical Feature: Culvert as seen looking north from GPS location 8100 (Frame 7647; 09/29/15).**





**Photo 436. View of eroded Physical Feature: Culvert as seen looking south from GPS location 8099 (Frame 7648; 09/29/15).**



**Photo 437. View of flow at Physical Feature: Culvert at GPS location 8099. View is to north on south side of road. Flow has eroded south side of road (Frame 7652; 09/29/15).**





**Photo 438. View of flow at Physical Feature: Culvert at GPS location 8100. Flow is to north on north side of road (Frame 7649; 09/29/15).**



**Photo 439. View of Physical Feature: Culvert at GPS locations 8101-8102. View is of north side of culvert (Frame 7650; 09/29/15).**





**Photo 440. View of south side of Physical Feature:  
Culvert at GPS locations 8101-8102 (Frame  
7651; 09/29/15).**



**Photo 441. View of offsite excavated ditch through an  
upland as seen from the Fill: Old Roads-  
Berms-Windrows at GPS location 8106  
(Frame 7653; 09/29/15).**





**Photo 442. View of berm on south side of Fill: Old Roads-Berms-Windrows as seen looking east from GPS location 8106 (Frame 7654; 09/29/15).**



**Photo 443. View of berm on south side of excavated ditch as seen looking east from GPS location 8110 (Frame 7655; 09/29/15).**





**Photo 444. View of Wetland: Wetland Shrubs-Rabbit-eye Blueberry (*Vaccinium virgatum*) Understory as seen looking south from GPS location 8120 (Frames 7656-7657; 09/29/15).**



**Photo 445. View of buttonbush dominated area of Wetland: Cypress-Mixed Hardwoods-Bays as seen looking northeast from GPS location 8138. This area is excavated (Frame 7658; 09/29/15).**





**Photo 446. View of south boundary of buttonbush dominated, excavated Wetland: Cypress-Mixed Hardwoods-Bays as seen looking southeast from GPS location 8138 (Frame 7660; 09/29/15).**



**Photo 447. Viewed of drained Wetland: Cypress-Mixed Hardwoods-Bays that lies along southwest boundary of excavated buttonbush and cypress area. View is southwest from GPS location 8138 (Frames 7661-7662; 09/29/15).**





**Photo 448. View of Wetland: Natural Flow-way that occurs at GPS locations 8166–8173. View is at GPS location 8168 (Frame 7663; 09/29/15).**



**Photo 449. View of Wetland: Natural Flow-way that occurs at GPS locations 8166–8173. View is at GPS location 8168 (Frame 7665; 09/29/15).**





**Photo 450. View of Wetland: Natural Flow-way that occurs at GPS locations 8166–8173. View is at GPS location 8168 (Frame 7666; 09/29/15).**



**Photo 451. View of Wetland: Natural Flow-way that occurs at GPS locations 8166–8173. View is at GPS location 8168 (Frame 7667; 09/29/15).**





**Photo 452. View of Wetland: Mixed Hardwood Swamp as seen looking east from GPS location 8215 (Frame 7668; 09/29/15).**



**Photo 453. View of Wetland: Natural Flow-way as seen looking west (upstream) from GPS location 8234 (Frame 7669; 09/29/15).**





**Photo 454. View of Wetland: Natural Flow-way as seen looking east (downstream) toward SR 121 from GPS location 8234 (Frame 7670; 09/29/15).**



**Photo 455. View of Wetland: Marsh dominated by *Panicum hemitomon* as seen looking west from GPS location 8242 (Frames 7671-7673; 10/01/15).**





**Photo 456. View of lichen and moss lines as seen within Wetland: Marsh at GPS location 8242 (Frame 7674; 10/01/15).**



**Photo 457. View of Hydric: Planted Pine Flatwoods in area of GPS location 8256 (Frame 7675; 10/01/15).**





**Photo 458. View of Hydric: Planted Pine Flatwoods in area of GPS location 8256 (Frame 7676; 10/01/15).**



**Photo 459. View of surface water in Hydric: Planted Pine Flatwoods at GPS location 8256 (Frame 7677; 10/01/15).**





**Photo 460. View of Sphagnum moss in Hydric: Planted Pine Flatwoods at GPS location 8256 (Frame 7678; 10/01/15).**



**Photo 461. View of Hydric: Planted Pine Flatwoods at GPS location 8256 (Frame 7679; 10/01/15).**





**Photo 462. View of buttressed *Pinus elliottii* in Hydric: Planted Pine Flatwoods at GPS location 8256 (Frame 7680; 10/01/15).**



**Photo 463. View of Hydric: Planted Pine Flatwoods at GPS location 8284 (Frame 7681; 10/01/15).**





**Photo 464. View of Hydric: Planted Pine Flatwoods at GPS location 8284 (Frame 7682; 10/01/15).**



**Photo 465. View of Wetland: Mixed Hardwood Swamp within excavated wetland at GPS location 8342 (Frame 7683; 10/01/15).**





**Photo 466. View of Wetland: Mixed Hardwood Swamp within excavated wetland at GPS location 8342 (Frame 7684; 10/01/15).**



**Photo 467. View of Wetland: Mixed Hardwood Swamp within excavated wetland at GPS location 8342 (Frame 7685; 10/01/15).**





**Photo 468. View of Mesic: Planted Pine-Mesic Pine Flatwoods as seen looking north to southeast from GPS location 8352 (Frame 7686; 08/31/15).**



**Photo 469. View of Mesic: Planted Pine-Mesic Pine Flatwoods as seen looking north to southeast from GPS location 8352 (Frames 7687-7688; 10/01/15).**





**Photo 470. View of Mesic: Planted Pine-Mesic Pine Flatwoods as seen looking south from GPS location 8352 (Frame 7689; 10/01/15).**



**Photo 471. View of Wetland: Cypress-Mixed Hardwoods-Bays as seen looking southeast from GPS location 8363 (Frame 7690; 10/01/15).**





**Photo 472. View of moss and lichen lines on *Taxodium ascendens* at GPS location 8363 (Frame 7691; 10/01/15).**



**Photo 473. View of Wetland: Planted Pine-Marsh as seen looking southwest from GPS location 8364 (Frame 7692; 10/01/15).**





**Photo 474. View of Wetland: Planted Pine-Marsh as seen looking northeast from GPS location 8364 (Frame 7693; 10/01/15).**



**Photo 475. View of Hydric: Planted Pine Flatwoods as seen at GPS location 8398 (Frame 7694; 10/01/15).**





**Photo 476. Pooled surface water and moss within the Hydric: Planted Pine Flatwoods at GPS location 8398 (Frame 7695; 10/01/15).**



**Photo 477. Buttressed slash pine and moss with the Hydric: Planted Pine Flatwoods as seen at GPS location 8398 (Frame 7696; 10/01/15).**





**Photo 478. Boundary of Hydric: Planted Pine Flatwoods and Transitional: Planted Pine Flatwoods as seen at GPS location 8416 (Frame 7697; 10/01/15).**



**Photo 479. *Lyonia lucida* and *Woodwardia virginiana* ground cover occurring at GPS location 8416 (Frame 7698; 10/01/15).**





**Photo 480. Dense dead and live *Lyonia lucida* occurring at GPS location 8416 (Frame 7699; 10/01/15).**



**Photo 481. View to northeast of Hydric: Planted Pine Flatwoods as seen from GPS location 8416 (Frame 7700; 10/01/15).**





**Photo 482. View of Hydric: Planted Pine Flatwoods as seen looking northwest from GPS location 8440 (Frame 7701; 10/01/15).**



**Photo 483. View of Hydric: Planted Pine Flatwoods as seen looking east from GPS location 8440 (Frame 7702; 10/01/15).**





**Photo 484. View of Hydric: Planted Pine Flatwoods at GPS location 8456 (Frame 7703; 10/01/15).**



**Photo 485. View of excavated pond occurring at GPS location 8574 (Frame 7708; 10/02/15).**





**Photo 486. View of excavated pond occurring at GPS location 8574 (Frame 7709; 10/02/15).**



**Photo 487. View of excavated pond occurring at GPS location 8574 (Frame 7710; 10/02/15).**





**Photo 488. View of Planted Pine-Mesic Pine Flatwoods as seen looking northwest from GPS location 8587 (Frame 7712; 10/02/15).**



**Photo 489. View of Planted Pine-Mesic Pine Flatwoods as seen looking south from GPS location 8587 (Frame 7713; 10/02/15).**





**Photo 490. View of Wetland: Cypress-Mixed Hardwoods-Bays as seen looking north from GPS location 8682 (Frame 7714; 10/02/15).**



**Photo 491. View of Wetland: Mixed Shrubs & Vines as seen looking south from GPS location 8682 (Frame 7715; 10/02/15).**





**Photo 492. View of Wetland: Planted Pine-Marsh as seen looking northeast from GPS location 8685 (Frame 7716; 10/02/15).**



**Photo 493. View of dense *Panicum hemitomon* in groundcover at GPS location 8685 (Frame 7717; 10/02/15).**





**Photo 494. View of moss line on *Pinus elliotii* at GPS location 8685 (Frame 7718; 10/02/15).**



**Photo 495. View of Wetland: Planted Pine-Marsh as seen looking north from GPS location 8699 (Frame 7719; 10/02/15).**





**Photo 496. View of Wetland: Planted Pine-Marsh as seen looking southeast from GPS location 8699 (Frame 7721; 10/02/15).**



**Photo 497. View of Wetland: Planted Pine-Marsh as seen looking south from GPS location 8699 (Frame 7722 (10/02/15).**





**Photo 498. View of Wetland: Planted Pine-Marsh as seen looking north from GPS location 8704 (Frame 7723; 10/02/15).**



**Photo 499. View of Wetland: Planted Pine-Marsh as seen looking northeast from GPS location 8704 (Frame 7724; 10/02/15).**





**Photo 500. View of Wetland: Planted Pine-Marsh as seen looking southeast from GPS location 8704 (Frame 7725; 10/02/15).**



**Photo 501. View of boundary of Hydric: Planted Pine Flatwoods and Wetland: Planted Pine-Marsh as seen looking north from GPS 8707 (Frame 7726; 10/02/15).**





**Photo 502. View of Wetland: Planted Pine-Marsh as seen looking north from GPS location 8734 (Frame 7728; 10/02/15).**



**Photo 503. View of Wetland: Planted Pine-Marsh as seen looking south from GPS location 8734 (Frame 7729; 10/02/15).**





**Photo 504. View of Hydric: Planted Pine Flatwoods as seen looking west from GPS location 8744 (Frame 7730; 10/02/15).**



**Photo 505. View of Hydric: Planted Pine Flatwoods as seen looking northwest from GPS location 8749 (Frame 7731; 10/02/15).**





**Photo 506. View of Hydric: Planted Pine Flatwoods as seen looking northwest from GPS location 8753 (Frame 7732; 10/02/15).**



**Photo 507. View of Hydric: Planted Pine Flatwoods as seen looking southeast from GPS location 8753 (Frame 7733; 10/02/15).**





**Photo 508. View of typical Hydric: Planted Pine Flatwoods groundcover and surface water as seen at GPS location 8757 (Frame 7734; 10/02/15).**



**Photo 509. View of typical Hydric: Planted Pine Flatwoods groundcover and surface water as seen at GPS location 8757 (Frame 7735; 10/02/15).**





**Photo 510. View of typical Hydric: Planted Pine Flatwoods groundcover and surface water as seen at GPS location 8757 (Frame 7736; 10/02/15).**



**Photo 511. View to north of road through wetland shrubs as seen at GPS location 10120 (Frame 1415; 04/14/17).**





**Photo 512. View of Hydric Planted Pine-Flatwoods community as seen at GPS location 10127 (Frame 1417; 04/14/17).**



**Photo 513. View of Transitional Flatwoods community as seen at GPS location 10131 (Frame 1418; 04/14/17).**





**Photo 514. View of Transitional Planted Pine Flatwoods community as seen at GPS location 10136 (Frame 1419; 04/14/17).**



**Photo 515. View of Mesic Planted Pine Flatwoods community as seen at GPS location 10139 (04/14/17).**





**Photo 516. View of Hydric Pine Flatwoods community as seen at GPS location 10161 (Frame 1421; 04/14/17).**



**Photo 517. View of boundary of Mesic and Hydric Plant Pine Flatwoods communities as seen at GPS location 10164 (Frame 1422; 04/14/17).**





**Photo 518. View of Mesic Planted Pine Flatwoods community as seen at GPS location 10169 (Frame 1423; 04/14/17).**



**Photo 519. View of Mesic Planted Pine Flatwoods community as seen at GPS location 10169 (Frame 1424; 04/14/17).**





**Photo 520. Panoramic view of excavated ditch within the unlogged Cypress-Mixed Hardwood-Bay Swamp as seen looking south to southwest at GPS location 10183 (Frames 1425–1427; 04/14/17).**



**Photo 521. View of ditch located within the Cypress-Mixed Hardwood-Bay Swamp as seen looking north at GPS location 10183 (Frame 1428; 04/14/17).**





**Photo 522. View of culvert located in old ditch that intercepts deeper, more recent excavation at GPS location 10184 (Frame 1431; 04/14/17).**



**Photo 523. View of unlogged Cypress-Mixed Hardwood-Bay Swamp as seen at GPS location 10191 (Frame 1433; 04/14/17).**





**Photo 524. View of Cypress-Mixed Hardwood-Bay Swamp as seen looking east at GPS location 10196 (Frame 1434; 04/14/17).**



**Photo 525. View of Cypress-Blackgum Swamp as seen looking northwest from GPS location 10196 (Frame 1435; 04/14/17).**





**Photo 526. View of Hydric Hammock-Mixed Hardwood wetland as seen at GPS location 10204 (Frame 1436; 04/14/17).**



**Photo 527. View of Transitional Planted Loblolly Pine Flatwoods community as seen at GPS location 10207 (Frame 1437; 04/14/17).**





**Photo 528. View of Mesic Planted Pine Flatwoods community as seen at GPS location 10212 (Frame 1438; 04/14/17).**



**Photo 529. View of Mesic Planted Pine Flatwoods community as seen at GPS location 10220 (Frame 1440; 04/14/17).**





**Photo 530. View of Hydric Planted Pine Flatwoods community as seen at GPS location 10242 (Frame 1441; 04/14/17).**



**Photo 531. View of Bay-dominated area of Hydric Hammock habitat found at GPS location 10251 (Frame 1442; 04/14/17).**





**Photo 532. View of dense evergreen vegetation at boundary of pine-dominated wetland and Hydric Plant Pine Flatwoods community at GPS location 10251 (Frame 1443; 04/14/17).**



**Photo 533. View of dense evergreen vegetation at boundary of pine-dominated wetland and Hydric Plant Pine Flatwoods community at GPS location 10251 (Frame 1444; 04/14/17).**





**Photo 534. Panoramic view of boundary of dense shrub-covered, logged Bay wetland and adjacent Hydric Planted Pine Flatwoods community as seen at GPS location 10271 (Frames 1445-1447; 04/14/17).**



**Photo 535. View of red maple (*Acer rubrum* L) dominated understory in Hydric Planted Pine Flatwoods as seen at GPS location 10295 (Frame 1449; 04/14/17).**





**Photo 536. View of collapsed culvert and roadway at offsite drainage divide as seen looking west from GPS location 10304 (Frame 1451; 04/14/17).**



**Photo 537. View of ditch south of drainage divide as seen looking south from GPS location 10304 (Frame 1452; 04/14/17).**





**Photo 538. View of sweetgum-red maple (*Liquidambar styraciflua*-*Acer rubrum*) dominated Hydric Hammock as seen at GPS location 10312 (Frame 1453; 04/14/17).**



**Photo 539. View of sweetgum-red maple (*Liquidambar styraciflua*-*Acer rubrum*) dominated Hydric Hammock as seen at GPS location 10312 (Frame 1454; 04/14/17).**





**Photo 540. View of berm (left side [west]) and excavated ditch that flows north within the Cypress-Mixed Hardwood-Bay Swamp community as seen at GPS location 10322 (Frame 1456; 04/14/17).**



**Photo 541. View to northwest of Hydric Hammock community as seen from south end of ditch at GPS location 10322 (Frame 1457; 04/17/17).**





**Photo 542. View of oak-dominated Hydric Hammock as seen at GPS location 10327 (Frame 1458; 04/14/17).**

Photos 543 through 549 show dilapidated structures remaining in an historical disturbed cypress dome located at GPS location 10356. This dome was a study site for experimental sewage disposal in wetlands that was conducted by the Center for Wetlands at the University of Florida from 1973 to 1979. This wetland is referred to as the sewage dome in *Cypress Swamps* by K. C. Ewel and H. T. Odum (editors), University of Florida Presses (1984; see page 70). ERC staff visited this wetland in 1980. The wetland was one of three (3) cypress domes in the area used to study the effects of effluent from the Whitney Trailer Park on the wetland systems.





**Photo 543. Experimental tower.**



**Photo 544. Sewage line.**





**Photo 545. Boardwalk.**



**Photo 546. Lichen lines in wetland.**





**Photo 547. Moss lines in wetland.**



**Photo 548. Tower.**





**Photo 549. Work platform.**



**Photo 550. View of transitional Planted pine Flatwoods as seen at GPS location 10392 (Frame 1466; 04/14/17).**





**Photo 551. View of very disturbed historical cypress habitat with minimal pine and cypress canopy and very dense shrubs and briers as seen at GPS location 10396 (Frame 1467; 04/14/17).**



**Photo 552. View of very disturbed historical cypress habitat with minimal pine and cypress canopy and very dense shrubs and briers as seen at GPS location 10396 (Frame 1468; 04/14/17).**





**Photo 553. View of very disturbed historical cypress habitat with minimal pine and cypress canopy and very dense shrubs and briers as seen at GPS location 10396 (Frame 1469; 04/14/17).**



**Photo 554. View of forest road located in area of GPS location 7235 (Frame 1489; 04/18/17).**





**Photo 555. View of excavated ditch located at GPS location 10407 (Frame 592; 04/18/17).**



**Photo 556. View of excavated ditch located at GPS location 10407 (Frame 593; 04/18/17).**









**Photo 557. Views of logged Cypress-Mixed Hardwood-Bay Swamp community showing marsh creation within larger skidder tracts and dense shrub understory regeneration in areas where surface was not disturbed (GPS locations 10445–10447; 04/18/17).**





**Photo 558. View of Mixed Hardwood Swamp as seen at GPS location 10482 (Frame 603; 04/18/17).**



**Photo 559. View of Mixed Hardwood Swamp as seen at GPS location 10482 (Frame 604; 04/18/17).**





**Photo 560. View of Mixed Hardwood Swamp as seen at GPS location 10482 (Frame 605; 04/18/17).**



**Photo 561. View of swamp laurel oak (*Quercus laurifolia*) Hydric Hammock habitat as seen at GPS location 10484 (Frame 1484; 04/18/17).**





**Photo 562. View of Hydric Hammock community as seen at GPS location 10489 (Frames 1485-1486; 04/18/17).**



**Photo 563. View of ironwood (*Carpinus caroliniana*) dominated Hydric Hammock habitat as seen at GPS location 10490 (Frame 1487; 04/18/17).**





**Photo 564. View of Hydric Planted Pine and Bay-dominated Flatwoods as seen at GPS location 10614 (Frame 1556; 05/01/17).**



**Photo 565. Panoramic view of deep water area within central area of Cypress Wetland as seen at GPS location 10657 (Frames 1557–1558; 05/01/17).**





**Photo 566. View of Cypress-Mixed Hardwood-Bay Swamp as seen at GPS location 10655 (Frame 1559; 05/01/17).**



**Photo 567. View of Cypress-Mixed Hardwood-Bay Swamp as seen at GPS location 10655 (Frame 1560; 05/01/17).**





**Photo 568. View of Hydric Planted Pine Flatwood habitat as seen at GPS location 10674 (Frame 1561; 05/01/17).**



**Photo 569. View of logged wetland area showing regeneration of dense shrub cover at GPS location 10699 (Frame 1562; 05/01/17).**





**Photo 570. View of Hydric Planted Pine Flatwoods community at GPS location 10699 (Frame 1563; 05/01/17).**



**Photo 571. View of Hydric Planted Pine Flatwoods community at GPS location 10699 (Frame 1564; 05/01/17).**





**Photo 572. View of Mesic Plant Pine Flatwoods community as seen at GPS location 10737 (Frame 1566; 05/01/17).**



**Photo 573. View of Mesic Plant Pine Flatwoods community as seen at GPS location 10741 (Frame 1567; 05/01/17).**





**Photo 574. View of logged Cypress and Mixed Hardwood Wetland located at GPS location 10766 (Frame 1568; 05/01/17).**



**Photo 575. View of logged Cypress and Mixed Hardwood Wetland located at GPS location 10766 (Frame 1569; 05/01/17).**









## Natural Area Resource Assessment **Gainesville 121 Project Site**

Wallace, P. M., R. A. Garren, and J. C. Carter. 2017. Natural Area Resource Assessment of the Gainesville 121 Project Site. Prepared for Weyerhaeuser NR Company in support of a current application for Planned Development. Ecosystem Research Corporation, Gainesville, FL. 550 pp.