



**Photo 1. Berm located at GPS location 4 (Frame 7355; 08/14/15).**



**Photo 2. Power line ditch located at GPS location 4 (Frame 7356; 08/14/15).**





**Photo 3. Berm (ditch block) located at GPS location 3 (Frame 7357; 08/14/15).**



**Photo 4. Power line ditch located at GPS location 3 (Frame 7358; 08/14/15).**





**Photo 5. Power line easement as seen looking west from GPS locations 3 and 4 (Frame 7359; 08/14/15).**



**Photo 6. Culvert located on south side of GPS location 2 (Frame 7360; 08/14/15).**





**Photo 7. Culvert and ditch located on north side of GPS location 2 (Frame 7361; 08/14/15).**



**Photo 8. Culvert located on south side of GPS location 1 (Frame 7362; 08/14/15).**





**Photo 9. Culvert and ditch located on north side of GPS location 1 (Frame 7363; 08/14/15).**



**Photo 10. Berm (ditch block) located at GPS location 5 as seen looking south (Frame 7364; 08/14/15).**





**Photo 11. Power line ditch as seen looking east from GPS location 5 (Frame 7365; 08/14/15).**



**Photo 12. Berm as seen looking north from GPS location 6 (Frame 7366; 08/14/15).**





**Photo 13. Power line ditch as seen looking east from GPS location 6 (Frame 7367; 08/14/15).**



**Photo 14. Power line easement as seen looking east from GPS locations 5 and 6 (Frame 7368; 08/14/15).**





**Photo 15. Culvert as seen looking south from GPS location 7 (Frame 7369; 08/14/15).**



**Photo 16. Culvert and ditch as seen looking north from GPS location 7 (Frame 7370; 08/14/15).**





**Photo 17. Culvert headwall as seen looking north from GPS location 8 (Frame 7371; 08/14/15).**



**Photo 18. Culvert headwall at GPS location 8 (Frame 7372; 08/14/15).**





**Photo 19. Ditch as seen looking south from GPS location 8 (Frame 7373; 08/14/15).**



**Photo 20. Ditch as seen looking north from GPS location 8 (Frame 7374; 08/14/15).**





**Photo 21. Excavated canal within Wetland: Mixed Oak-Hardwoods-Successional community located south of GPS location 9 (Frames 1486-1487; 08/14/15).**



**Photo 22. Excavated canal within Wetland: Mixed Oak-Hardwoods-Successional community located north of GPS location 9 (Frames 1488-1489; 08/14/15).**





**Photo 23. View of three culverts as seen at GPS location 9 (Frame 1490; 08/14/15).**



**Photo 24. View of Planted Pine-Mesic Pine Flatwoods as seen looking southwest from GPS location 11 (Frames 1491-1492; 08/14/15).**





**Photo 25. View of Hydric: Mixed Oak-Hardwoods-Successional community as seen looking southwest from GPS location 16 (Frames 1493-1494; 08/14/15).**



**Photo 26. View of Surface Water: Excavated Creek in Wetland as seen looking east from GPS location 23 (Frames 1495-1496; 08/14/15).**





**Photo 27. View of Wetland: Mixed Oak-Hardwoods-Successional community as seen looking east from GPS location 28 (Frames 1497-1498; 08/14/15).**



**Photo 28. View of Wetland: Mixed Oak-Hardwoods-Successional community as seen looking southwest from GPS location 45 (Frames 1499-1500; 08/14/15).**





**Photo 29. View of lichen line seen in the Wetland: Mixed Oak-Hardwoods-Successional community at GPS location 45 (Frame 1501; 08/14/15).**





**Photo 30. View of Wetland: Mixed Hardwood Swamp as seen looking east from GPS location 47 (Frames 1502-1503; 08/14/15).**



**Photo 31. View of Surface Water: Excavated Creek in Wetland as seen looking east from GPS location 51 (Frames 1504-1505; 08/14/15).**





**Photo 32. View of Surface Water: Excavated Creek in Wetland as seen looking north from GPS location 51 (Frame 1506; 08/14/15).**



**Photo 33. View of Wetland: Mixed Shrubs & Vines community as seen looking northwest from GPS location 62 (Frames 1507-1508; 08/14/15).**





**Photo 34. View of Planted Pine-Mesic Pine Flatwoods as seen looking southwest from GPS location 106 (Frames 1509-1510; 08/14/15).**



**Photo 35. View of Planted Pine-Mesic Pine Flatwoods as seen looking south from GPS location 106 (Frames 1511-1512; 08/14/15).**





**Photo 36. View of Planted Pine-Mesic Pine Flatwoods as seen looking southeast from GPS location 130 (Frames 1513-1514; 08/17/15).**



**Photo 37. View of Surface Water: Excavated Creek in Wetland as seen looking north from GPS location 168 (Frames 1515-1516; 08/17/15).**





**Photo 38. View of Wetland: Planted Pine-Mixed Hardwoods as seen at GPS location 168 looking east toward GPS location 167 (Frames 1517-1518; 08/17/15).**



**Photo 39. View of Wetland: Planted Pine-Mixed Hardwoods community as seen looking northwest from GPS location 177 (Frames 1519-1520; 08/17/15).**





**Photo 40. View of Wetland: Planted Pine-Mixed Hardwoods community as seen looking east from GPS location 197 (Frames 1521-1522; 08/17/15).**



**Photo 41. View of Surface Water: Excavated Creek in Wetland as seen looking northwest from GPS location 198 (Frames 1523-1524; 08/17/15).**





**Photo 42. View of Surface Water: Excavated Creek in Wetland as seen looking west from GPS location 200 (Frames 1525-1526; 08/17/15).**



**Photo 43. View of Surface Water: Excavated Creek in Wetland as seen looking south from GPS location 200 (Frames 1527-1528; 08/17/15).**





**Photo 44. View of Mixed Hardwood Swamp as seen looking east from GPS location 201 (Frames 1529-1530; 08/17/15).**



**Photo 45. View of Mesic: Planted Pine-Mesic Pine Flatwoods as seen looking east from GPS location 220 (Frames 1531-1533; 08/17/15).**





**Photo 46. View of Surface Water: Excavated Creek in Wetland as seen looking north from GPS location 237 (Frames 1534-1535; 08/17/15).**



**Photo 47. View of Wetland: Mixed Shrubs & Vines, Undetermined Boundary, as seen looking east from GPS location 263 (Frames 1536-1537; 08/17/15).**





**Photo 48. View of Mesic: Planted Pine-Mesic Pine Flatwoods as seen looking south from GPS location 282 (Frames 1530-1532; 08/17/15).**



**Photo 49. View of Mesic: Mixed Shrubs & Vines community as seen looking southwest from GPS location 300 (Frames 1542-1543; 08/18/15).**





**Photo 50. View of gopher tortoise burrow (Inactive, Juvenile) located at GPS location 308 (Frame 1540; 08/18/15).**





**Photo 51. View of gopher tortoise burrow (Potentially Occupied) located at GPS location 323 (Frame 1541; 08/18/15).**





**Photo 52. View of Planted Pine-Mesic Pine Flatwoods as seen looking northwest from GPS location 327 (Frames 1544-1545; 08/18/15).**



**Photo 53. View of gopher tortoise burrow (Active) located at GPS location 336 (Frame 1546; 08/18/15).**





**Photo 54. View of gopher tortoise burrow (Active) located at GPS location 346 (Frame 1547; 08/18/15).**





**Photo 55. View of gopher tortoise burrow (Active) located at GPS location 351 (Frame 1548; 08/18/15).**





**Photo 56. View of gopher tortoise burrow (Active) located at GPS location 352 (Frame 1549; 08/18/15).**





**Photo 57. View of gopher tortoise burrow (Active, Juvenile) located at GPS location 353 (Frame 1550; 08/18/15).**





**Photo 58. View of Planted Pine-Mesic Pine Flatwoods as seen looking west-northwest from GPS location 364 (Frames 1551-1552; 08/18/15).**



**Photo 59. View of gopher tortoise burrow (Active, Juvenile) located at GPS location 367 (Frame 1553; 08/18/15).**





**Photo 60. View of Planted Pine-Mesic Pine Flatwoods as seen looking west from GPS location 372 (Frames 1554-1555; 08/18/15).**



**Photo 61. View of Hydric: Planted Pine Flatwoods as seen looking northeast from GPS location 377 (Frames 1556-1557; 08/18/15).**





**Photo 62. View of Wetland: Mixed Hardwoods-Seepage Slope community as seen looking east from GPS location 404 (Frames 1558-1559; 08/18/15).**



**Photo 63. View of Wetland: Mixed Hardwoods-Seepage Slope community as seen looking south from GPS location 404 (Frames 1560-1561; 08/18/15).**





**Photo 64. View of Planted Pine-Mesic Pine Flatwoods as seen looking east from GPS location 414 (Frames 1562-1563; 08/18/15).**



**Photo 65. View of Planted Pine-Mesic Pine Flatwoods as seen looking west from GPS location 414 (Frames 1564-1565; 08/18/15).**





**Photo 66. View of roadway and habitat as seen looking east from GPS location 9 (Frames 1566-1567; 08/18/15).**



**Photo 67. View of Wetland: Planted Pine-Marsh as seen looking northwest from GPS location 470 (Frames 1568-1569; 08/18/15).**





**Photo 68. View of Wetland: Mixed Hardwoods-Seepage Slope as seen looking southeast from GPS location 501 (Frames 1570-1571; 08/18/15).**



**Photo 69. View of Wetland: Hydric Hammock as seen looking south from GPS location 511 (Frames 1572-1573; 08/18/15).**





**Photo 70. View of Wetland: Hydric Hammock as seen looking south from GPS location 517 (Frames 1574-1575; 08/18/15).**



**Photo 71. View of Wetland: Hydric Hammock as seen looking west from GPS location 517 (Frames 1576-1677; 08/18/15).**





**Photo 72. View of Wetland: Mixed Hardwood Swamp as seen looking southwest from GPS location 522 (Frames 1578-1579; 08/18/15).**



**Photo 73. View of Surface Water: Excavated Creek in Wetland as seen looking west from GPS location 555 (Frame 1580; 08/18/15).**





**Photo 74. View of wetland flagging over stream as seen looking west from GPS location 561 (Frame 1581; 08/18/15).**





**Photo 75. View of Hydric: Planted Pine Flatwoods as seen looking north from GPS location 565 (Frames 1582-1583; 08/18/15).**



**Photo 76. View of Wetland: Planted Pine-Marsh as seen at GPS location 569 (Frame 1584-1585; 08/18/15).**





**Photo 77. View of Wetland: Mixed Hardwood Swamp as seen looking northeast from GPS location 582 (Frames 1586-1587; 08/18/15).**



**Photo 78. View of Surface Water: Excavated Creek in Wetland as seen looking south from GPS location 622 (Frames 1650-1651; 08/21/15).**





**Photo 79. View of Wetland: Mixed Hardwoods-Seepage Slope as seen looking west from GPS location 624 (Frames 1652-1653; 08/21/15).**



**Photo 80. View of Wetland: Mixed Oak-Hardwoods-Successional community as seen looking east from GPS location 625 (Frames 1659-1660; 08/21/15).**





**Photo 81. View of old cat-faced stump located at GPS location 646 (Frame 1656; 08/21/15).**





**Photo 82. View of old cat-faced stump located at GPS location 646 (Frame 7396; 08/21/15).**



**Photo 83. View of old cat-faced stump located at GPS location 646 (Frame 7397; 08/21/15).**





**Photo 84. View of old cat-faced stump located at GPS location 646 (Frame 7398; 08/21/15).**



**Photo 85. View of Wetland: Natural Flow-way as seen looking east from GPS location 653 (Frames 1657-1658; 08/21/15).**





**Photo 86. View of Surface Water: Excavated Creek in Wetland as seen looking east from GPS location 655 (Frames 1659-1660; 08/21/15).**



**Photo 87. View of Surface Water: Excavated Creek in Wetland as seen looking west from GPS location 655 (Frames 1661-1662; 08/21/15).**





**Photo 88. View of Wetland: Mixed Hardwood Swamp as seen looking northwest from GPS location 676 (Frames 1665-1666; 08/21/15).**



**Photo 89. View of Wetland: Natural Flow-way as seen looking north from GPS location 687 (Frames 1667-1668; 08/21/15).**





**Photo 90. View of old cat-faced pine as seen at GPS location 687 (Frame 1669; 08/21/15).**





**Photo 91. View of Wetland: Mixed Hardwood Swamp as seen looking north from GPS location 693 (Frames 1670-1671; 08/21/15).**

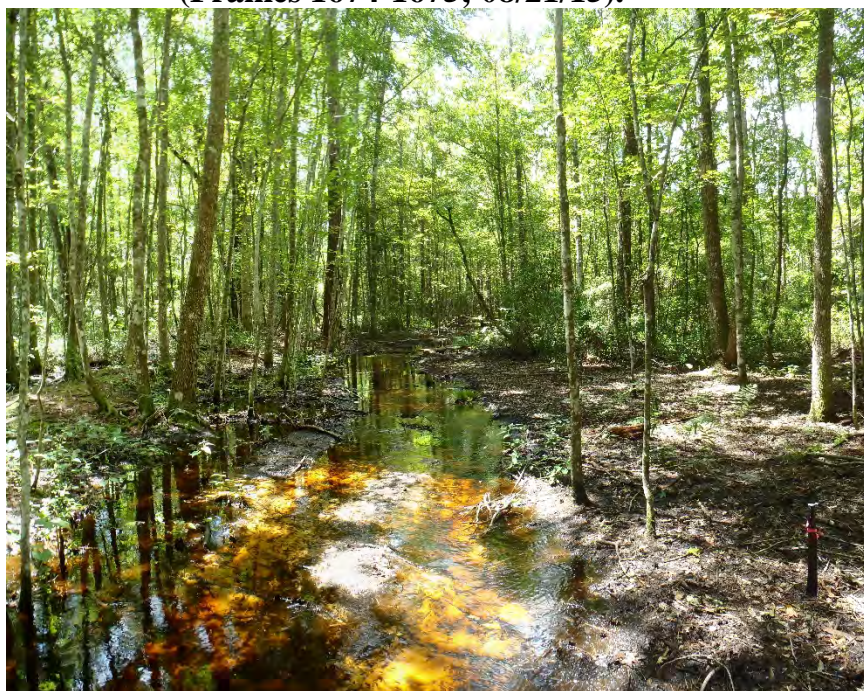


**Photo 92. View of Wetland: Mixed Hardwood Swamp as seen looking southeast from GPS location 693 (Frames 1672-1673; 08/21/15).**





**Photo 93. View of Wetland: Hydric Hammock as seen looking northeast from GPS location 702 (Frames 1674-1675; 08/21/15).**



**Photo 94. View of Wetland: Hydric Hammock as seen looking southwest from GPS location 702 (Frames 1676-1677; 08/21/15).**





**Photo 95. View of Surface Water: Excavated Creek in Wetland as seen looking northeast from GPS location 714 (Frames 1678-1679; 08/21/15).**



**Photo 96. View of Surface Water: Excavated Creek in Wetland as seen looking northwest from GPS location 714 (Frames 1680-1681; 08/21/15).**





**Photo 97. View of Surface Water: Excavated Creek in Wetland as seen looking southwest from GPS location 714 (Frames 1682-1683; 08/21/15).**



**Photo 98. View of Wetland: Planted Pine-Marsh as seen looking west from GPS location 754 (Frames 1684-1685; 08/21/15).**





**Photo 99. View of Wetland: Planted Pine-Marsh as seen looking north from GPS location 790 (Frames 1686-1687; 08/21/15).**



**Photo 100. View of Wetland: Planted Pine-Marsh as seen looking northeast from GPS location 829 (Frames 1688-1689; 08/21/15).**





**Photo 101. View of Hydric: Planted Pine Flatwoods as seen looking east from GPS location 845 (Frames 1690-1691; 08/21/15).**



**Photo 102. View of Mesic: Planted Pine-Mesic Pine Flatwoods as seen looking west from GPS location 880 (Frames 1692-1693; 08/21/15).**





**Photo 103. View of Surface Water: Excavated Creek in Wetland located on east side of the gas line right-of-way as seen looking south down gas line from GPS location 2013 (Frames 1695-1696; 08/25/15).**

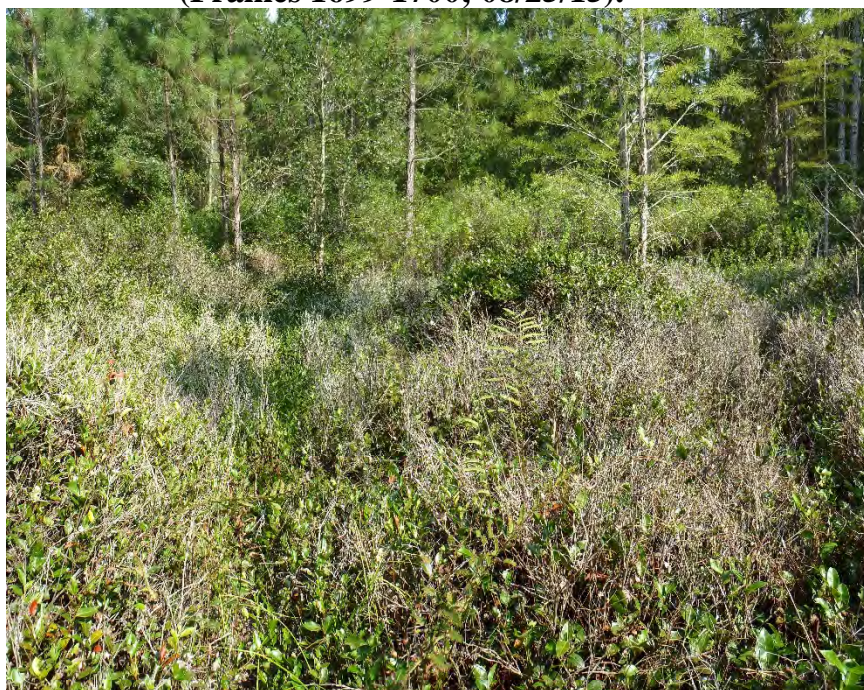


**Photo 104. View of Wetland: Mixed Hardwood Swamp as seen looking south from GPS location 2014 (Frames 1697-1698; 08/25/15).**





**Photo 105. View of Wetland: Mixed Hardwood Swamp as seen looking north from GPS location 2019 (Frames 1699-1700; 08/25/15).**

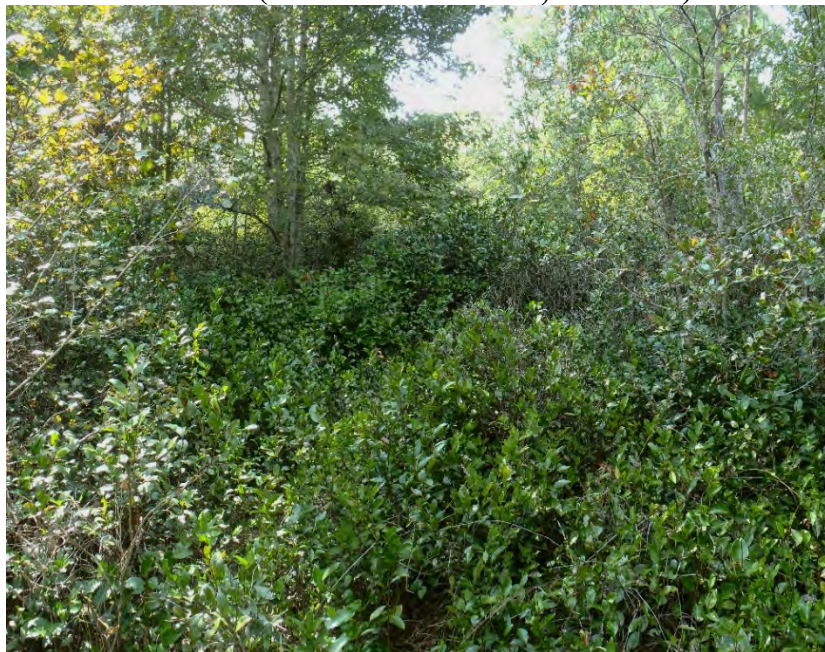


**Photo 106. View of Wetland: Mixed Hardwoods-Fetterbush as seen looking southeast from GPS location 2206 (Frames 1705-1706; 08/25/15).**





**Photo 107. View of Hydrologically Altered Marsh as seen looking northeast from GPS location 2207 (Frames 1703-1704; 08/25/15).**



**Photo 108. View of Wetland: Mixed Hardwood Swamp-Bays-Fetterbush as seen looking west from GPS location 2211 (Frames 1707-1708; 8/25/15).**





**Photo 109. View of Hydric: Planted Pine Flatwoods as seen looking southwest from GPS location 2218 (Frames 1709-1710; 08/25/15).**



**Photo 110. View of Planted Pine-Mesic Pine Flatwoods as seen looking west from GPS location 2228 (Frames 1711-1712; 08/25/15).**





**Photo 111. View of Hydric: Planted Pine Flatwoods as seen looking west from GPS location 2230 (Frames 1713-1714; 08/25/15).**



**Photo 112. View of Florida Gas right-of-way as seen looking south from GPS location 2241 (Frames 1715-1716; 08/25/15).**





**Photo 113. View of Wetlands: Mixed Hardwood Swamp-Bays-Fetterbush as seen looking south down gas line right-of-way from GPS location 2245 (Frames 1717-1718; 08/25/15).**



**Photo 114. View of Wetlands: Mixed Hardwood Swamp-Bays-Fetterbush as seen looking south from GPS location 2248 (Frames 1719-1720; 08/25/15).**





**Photo 115. View of Upland: Oldfield as seen looking south from GPS location 2249 (Frames 1721-1722; 08/25/15).**



**Photo 116. View of Planted Pine-Mesic Pine Flatwoods as seen looking west from GPS location 2273 (Frames 1723-1724; 08/25/15).**





**Photo 117. View of Physical Feature: Culvert as seen looking north from GPS location 2276 (Frames 1725-1726; 08/25/15).**

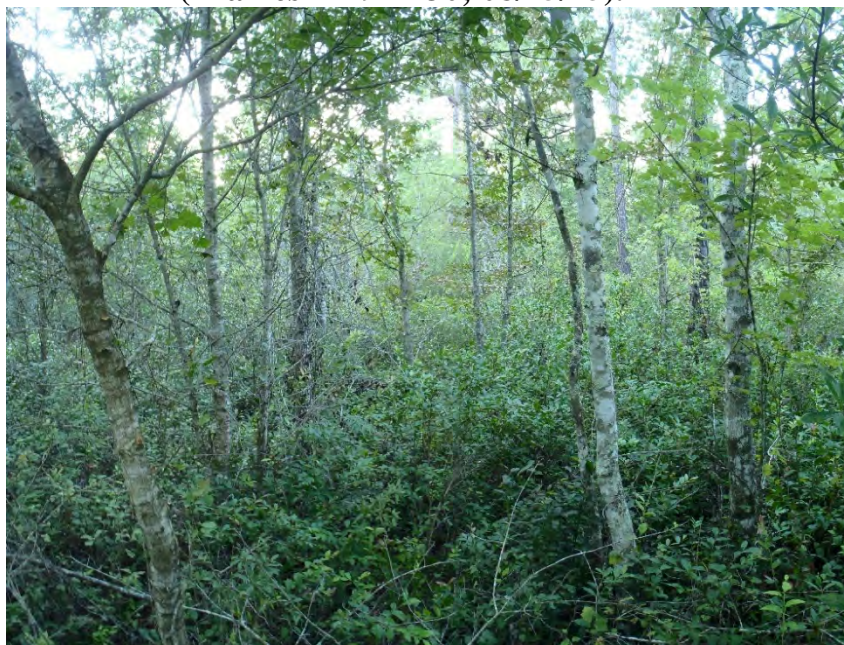


**Photo 118. View of Physical Feature: Culvert as seen looking south from GPS location 2276 (Frames 1727-1728; 08/25/15).**





**Photo 119. View of Mesic: Pine Flatwoods as seen looking northwest from GPS location 2283 (Frames 1729-1730; 08/25/15).**



**Photo 120. View of Wetlands: Mixed Hardwood Swamp-Bays-Fetterbush as seen looking northwest from GPS location 2294 (Frames 1731-1732; 08/25/15).**





**Photo 121. View of Wetlands: Mixed Hardwood Swamp-Bays-Fetterbush as seen looking northwest from GPS location 2298 (Frames 1733-1734; 08/25/15).**



**Photo 122. View of Wetlands: Mixed Hardwood Swamp-Bays-Fetterbush as seen looking southwest from GPS location 2305 (Frames 1735-1736; 08/25/15).**





**Photo 123. View of Mesic: Pine Flatwoods as seen looking southeast from GPS location 2310 (Frames 1737-1738; 08/25/15).**



**Photo 124. View of Wetland: Cypress-Mixed Hardwoods-Bays as seen looking east from GPS location 2323 (Frames 1739-1740; 08/25/15).**





**Photo 125. View of Planted Pine-Mesic Pine Flatwoods as seen looking east from GPS location 2328 (Frames 1741-1742; 08/25/15).**



**Photo 126. View of Physical Feature: Culvert as seen looking west from GPS location 2340 (Frames 1743-1744; 08/26/15).**





**Photo 127. View of Physical Feature: Culvert at GPS location 2340 (Frame 1745; 08/26/15).**





**Photo 128. View of Wetland: Cypress-Mixed Hardwoods-Bays as seen looking west from GPS location 2343 (Frames 1746-1747; 08/26/15).**



**Photo 129. View of Physical Feature: Culvert as seen looking west from GPS location 2344 (Frames 1748-1749; 08/26/15).**





**Photo 130. View of Physical Feature: Culvert at GPS location 2344 (Frame 1750; 08/26/15).**



**Photo 131. View of Wetland: Mixed Hardwood Swamp as seen looking west from GPS location 2347 (Frames 1751-1752; 08/26/15).**





**Photo 132. View of Planted Pine-Mesic Pine Flatwoods as seen looking northwest from GPS location 2355 (Frames 1753-1754; 08/26/15).**



**Photo 133. View of Hydric: Planted Pine Flatwoods as seen looking east from GPS location 2363 (Frames 1755-1756; 08/26/15).**





**Photo 134. View of *Lobelia cardinalis* within the Wetland: Cypress-Mixed Hardwoods-Bays community located at GPS location 2370 (Frame 1757; 08/26/15).**





**Photo 135. View of Wetland: Cypress-Mixed Hardwoods-Bays as seen looking west from GPS location 2370 (Frames 1761-1762; 08/26/15).**



**Photo 136. View of Mesic: Mixed Oak-Hardwoods-Successional as seen looking east from GPS location 1016 (Frames 1765-1766; 08/26/15).**





**Photo 137. View of Wetland Boundary: Mixed Shrubs & Vines as seen looking west from GPS location 1017 (Frames 1767-1768; 08/26/15).**



**Photo 138. View of Physical Feature: Culvert as seen looking south from GPS location 1031 (Frames 1769-1670; 08/26/15).**





**Photo 139. View of Physical Feature: Culvert as seen looking south from GPS location 1032 (Frames 1771-1772; 08/26/15).**



**Photo 140. View of Physical Feature: Culvert as seen looking south from GPS location 1033 (Frames 1773-1774; 08/26/15).**





**Photo 141. View of Physical Feature: Culvert as seen looking south from GPS location 1036 (Frames 1777-1778; 08/26/15).**



**Photo 142. View of Physical Feature: Culvert as seen looking south from GPS location 1037 (Frames 1779-1780; 08/26/15).**





**Photo 143. View of Physical Feature: Culvert as seen looking south from GPS location 1038 (Frames 1781-1782; 08/26/15).**



**Photo 144. View of Physical Feature: Culvert as seen looking south from GPS location 1039 (Frames 1783-1784; 08/26/15).**





**Photo 145. View of Physical Feature: Culvert as seen looking north from GPS location 1040 (Frames 1785-1786; 08/26/15).**



**Photo 146. View of Physical Feature: Culvert as seen looking south from GPS location 1040 (Frame 1787; 08/26/15).**





**Photo 147. View of Wetland: Mixed Hardwood Swamp as seen looking southeast from GPS location 1043 (Frames 1788-1789; 08/26/15).**



**Photo 148. View of Surface Water: Excavated Creek in Wetland as seen looking east from GPS location 1049 (Frames 1790-1791; 08/26/15).**





**Photo 149. View of Hydric: Planted Pine Flatwoods as seen looking south from GPS location 1072 (Frames 1792-1793; 08/26/15).**



**Photo 150. View of wetland marsh lying within GRU easement as seen looking east from GPS location 1072 (Frames 1794-1795; 08/26/15).**





**Photo 151. View of Planted Pine-Mesic Pine Flatwoods as seen looking east from GPS location 1081 located along wetland boundary (Frames 1796-1797; 08/26/15).**



**Photo 152. View of Hydric: Planted Pine Flatwoods as seen looking west from GPS location 1081 (Frames 1798-1799; 08/26/15).**





**Photo 153. View of Hydric: Planted Pine Flatwoods as seen looking east from GPS location 1087 (Frames 1800-1801; 08/26/15).**



**Photo 154. View of Hydric: Planted Pine Flatwoods as seen looking west from GPS location 1100 (Frames 1804-1805; 08/26/15).**





**Photo 155. View of Wetland: Mixed Hardwoods-Seepage Slope as seen looking southeast from GPS location 1102 (Frames 1802-1803; 08/26/15).**



**Photo 156. View of Physical Feature: Culvert located at GPS location 1117 (Frame 1806; 08/26/15).**





**Photo 157. View of Planted Pine-Mesic Pine Flatwoods as seen looking south from GPS location 1148 (Frames 1808-1809; 08/26/15).**



**Photo 158. View of Planted Pine-Mesic Pine Flatwoods as seen looking south from GPS location 1153 (Frames 1810-1811; 08/26/15).**





**Photo 159. View of *Sabatia brevifolia* located within the Planted Pine-Mesic Pine Flatwoods at GPS location 1153 (Frame 1812; 08/26/15).**





**Photo 160. View of culverts on north side of power line easement within the Planted Pine-Mesic Pine Flatwoods located at GPS location 9000 (Frame 1813; 08/27/15).**



**Photo 161. View of culverts on south side of power line easement within the Planted Pine-Mesic Pine Flatwoods located at GPS location 9000 (Frame 1814; 08/27/15).**





**Photo 162. View of Physical Feature: Culvert located on north side of power line easement at GPS location 1176 (Frame 1815; 08/27/15).**



**Photo 163. View of Physical Feature: Culvert located on south side of power line easement at GPS location 1176 (Frame 1816; 08/27/15).**





**Photo 164. View of Physical Feature: Culvert located on north side of power line easement at GPS location 1177 (Frame 1817; 08/27/15).**



**Photo 165. View of Physical Feature: Culvert located on south side of power line easement at GPS location 1177 (Frame 1818; 08/27/15).**





**Photo 166. View of Hydric: Planted Pine Flatwoods as seen looking northeast from GPS location 1199 (Frames 1819-1820; 08/27/15).**



**Photo 167. View of Hydric: Planted Pine Flatwoods with *Sarracenia minor* as seen looking west from GPS location 1201 (Frames 1821-1822; 08/27/15).**





**Photo 168. View of Hydric: Planted Pine Flatwoods as seen looking east from GPS location 1201 (Frames 1823-1824; 08/27/15).**



**Photo 169. View of Planted Pine-Mesic Pine Flatwoods as seen looking northeast from GPS location 1210 (Frames 1825-1826; 08/27/15).**





**Photo 170. View of gopher tortoise burrow (Potentially Occupied) located at GPS location 1212 (Frame 1827; 08/27/15).**



**Photo 171. View of Wetland Boundary: Mixed Shrubs & Vines as seen looking east from GPS location 1235 (Frame 1828-1829; 08/27/15).**





**Photo 172. View of Transitional: Planted Pine Flatwoods as seen looking southeast from GPS location 1249 (Frames 1830-1831; 08/27/15).**



**Photo 173. View of Wetland: Mixed Hardwoods-Fetterbush as seen looking northeast from GPS location 1254 (Frames 1832-1833; 08/27/15).**





**Photo 174. View of Physical Feature: Culvert located on north side of road at GPS location 1272 (Frame 1835; 08/27/15).**



**Photo 175. View of Surface Water as seen looking west from GPS location 1284 (Frames 1836-1837; 08/27/15).**





**Photo 176. View of Surface Water: Excavated Creek in Wetland as seen looking southwest from GPS location 1305 (Frames 1838-1839; 08/27/15).**

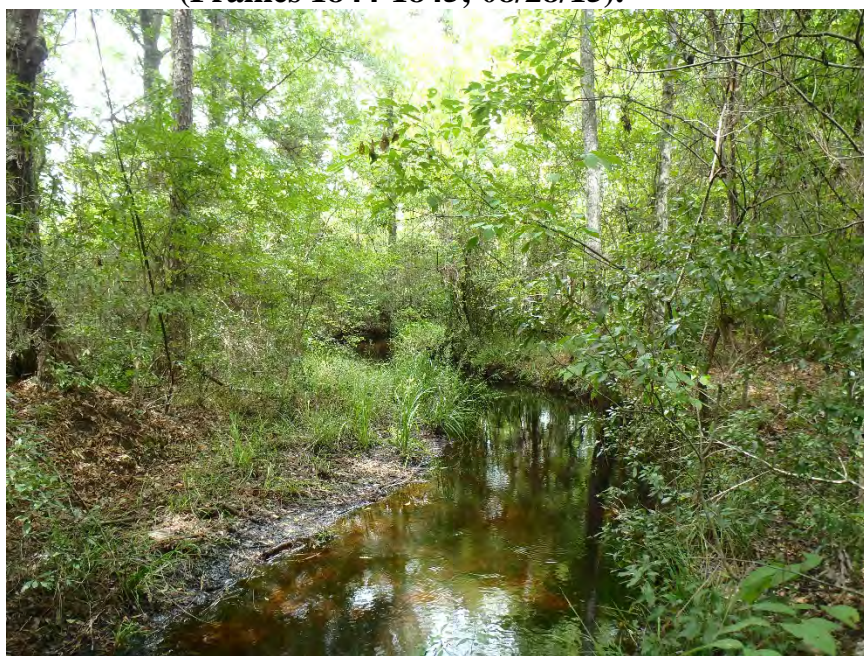


**Photo 177. View of Physical Feature: Culvert located on south side of road at GPS location 1308 (Frame 1840; 08/27/15).**





**Photo 178. View of Hydric: Planted Pine Flatwoods as seen looking south from GPS location 1319 (Frames 1844-1845; 08/28/15).**



**Photo 179. View of Surface Water: Excavated Creek in Wetland as seen looking north from GPS location 1343 (Frame 1846; 08/28/15).**





**Photo 180. View of Surface Water: Excavated Creek in Wetland as seen looking south from GPS location 1343 (Frame 1847; 08/28/15).**



**Photo 181. View of Surface Water: Excavated Creek in Wetland as seen looking north from GPS location 1343 (Frame 1852; 08/28/15).**





**Photo 182. View of Surface Water: Excavated Creek in Wetland as seen looking south from GPS location 1343 (Frame 1853; 08/28/15).**



**Photo 183. View of Wetland: Mixed Hardwood Swamp as seen looking south from GPS location 1348 (Frames 1848-1849; 08/28/15).**





**Photo 184. View of Wetland: Hydric Hammock as seen looking north from GPS location 1350 (Frames 1850-1851; 08/28/15).**



**Photo 185. View of Transitional: Planted Pine Flatwoods as seen looking west from GPS location 1414 (Frames 1854-1855; 08/28/15).**





**Photo 186. View of Mesic: Planted Pine-Mesic Pine Flatwoods as seen looking south from GPS location 1437 (Frames 1856-1857; 08/28/15).**



**Photo 187. View of Hydric: Planted Pine Flatwoods as seen looking southwest from GPS location 1450 (Frames 1858-1859; 08/28/15).**





**Photo 188. View of Planted Pine-Mesic Pine Flatwoods as seen looking north from GPS location 1467 (Frames 1860-1861; 08/28/15).**



**Photo 189. View of Surface Water: Excavated Creek in Wetland as seen looking west from GPS location 1473 (Frame 1862; 08/28/15).**





**Photo 190. View of Surface Water: Excavated Creek in Wetland as seen looking east from GPS location 1473 (Frame 1863; 08/28/15).**



**Photo 191. Rocky Creek: view to south of east side of culverts at CR 231 at GPS location 1516 (Frame 7406; 08/28/15).**





**Photo 192. Rocky Creek: view to south of box culvert on east side CR 231 at GPS location 1516 (Frame 7407; 08/28/15).**



**Photo 193. Rocky Creek: view to south of box culverts on west side of CR 231 at GPS location 1516 (Frame 7408; 08/28/15).**





**Photo 194. Rocky Creek: view to east (downstream) of CR 231 culverts located at GPS location 1517 (Frame 7410; 08/28/15).**



**Photo 195. Rocky Creek: view to south of culverts located at GPS location 1517 on east side of CR 231 at GPS location 1517 (Frame 7411; 08/28/15).**





**Photo 196. Rocky Creek: view to south of culvert at west side of CR 231 at GPS location 1517 (Frame 7412; 08/28/15).**



**Photo 197. View to east (upstream) of major branch of Rocky Creek at culvert located at GPS location 1518 (Frame 7414; 08/28/15).**





**Photo 198. View to south of box culverts on east side (upstream) of CR 231 in Rocky Creek at GPS location 1518 (Frame 7416; 08/28/15).**



**Photo 199. Rocky Creek: view to west (downstream) of major branch of Rocky Creek at culvert located at GPS location 1518 (Frame 7419; 08/28/15).**





**Photo 200. Rocky Creek: view to north along CR 231 of west side of box culverts located at GPS location 1518 (Frame 7420; 08/28/15).**



**Photo 201. View of Wetland: Planted Pine-Marsh as seen looking southeast from GPS location 1534 (Frames 1864-1865; 08/31/15).**





**Photo 202. View of Wetland: Planted Pine-Marsh as seen looking west from GPS location 1553 (Frames 1866-1867; 08/31/15).**



**Photo 203. View of Mesic: Planted Pine-Mesic Pine Flatwoods as seen looking west from GPS location 1568 (Frames 1868-1869; 08/31/15).**





**Photo 204. View of Wetland: Mixed Hardwood Swamp as seen looking southwest from GPS location 1578 (Frames 1870-1871; 08/31/15).**



**Photo 205. View of Wetland: Planted Pine-Mixed Hardwoods as seen looking east from GPS location 1586 (Frames 1872-1873; 08/31/15).**





**Photo 206. View of Wetland: Planted Pine-Mixed Hardwoods as seen looking west from GPS location 1586 (Frames 1874-1875; 08/31/15).**



**Photo 207. View of Mesic: Planted Pine-Mesic Pine Flatwoods as seen looking east from GPS location 1598 (Frames 1876-1877; 08/31/15).**





**Photo 208. View of Wetland: Planted Pine-Marsh as seen looking east from GPS location 1605 (Frames 1878-1879; 08/31/15).**



**Photo 209. View of Physical Feature: Culvert located on north side of road at GPS location 1623 (Frame 1880; 08/31/15).**





**Photo 210. View of Physical Feature: Culvert located on south side of road at GPS location 1570 (Frame 1881; 08/31/15).**





**Photo 211. View of Mesic: Mixed Oaks-Hardwoods-  
Rabbit-eye Blueberry (*Vaccinium virgatum*)  
Understory as seen looking east from GPS  
location 1634 (Frames 1882-1883; 08/31/15).**



**Photo 212. View of *Vaccinium virgatum* roots, stolon,  
and rhizomes as seen at GPS location 1634  
(Frame 1884; 08/31/15).**





**Photo 213. View of Wetlands: Mixed Hardwood Swamp-Bays-Fetterbush as seen looking south from GPS location 1657 (Frames 1886-1887; 08/31/15).**



**Photo 214. View of Mesic: Mixed Oaks-Hardwoods-Rabbit-eye Blueberry Understory as seen looking north from GPS location 1676. View is of inundated forestry road (Frames 1888-1889; 08/31/15).**





**Photo 215. View of Physical Feature: Culvert located on east side of road as seen at GPS location 1693 (Frame 1890; 08/31/15).**



**Photo 216. View of Physical Feature: Culvert located on west side of road as seen at GPS location 1694 (Frame 1891; 08/31/15).**





**Photo 217. View of Physical Feature: Culvert located on west side of road as seen at GPS location 1696 (Frame 1892; 08/31/15).**



**Photo 218. View of Physical Feature: Culvert located on east side of road as seen at GPS location 1697 (Frame 1893; 08/31/15).**





**Photo 219. View of Wetland: Mixed Hardwood Swamp as seen looking east from GPS location 5013 (Frames 1897-1898; 09/02/15).**



**Photo 220. View of Hydric: Planted Pine Flatwoods as seen looking west from GPS location 5029 (Frames 1899-1900; 09/02/15).**





**Photo 221. View of Wetland: Planted Pine-Mixed Hardwoods as seen looking east from GPS location 5038 (Frames 1901-1902; 09/02/15).**



**Photo 222. View of Physical Feature Boundary: Wetland Delineation Flagging as seen looking northeast from GPS location 5044 (Frames 1903-1904; 09/02/15).**





**Photo 223. View of Physical Feature Boundary:  
Wetland Delineation Flagging as seen  
looking southwest from GPS location 5044  
(Frames 1905-1906; 09/02/15).**



**Photo 224. View of Wetland: Mixed Hardwood  
Swamp as seen looking northeast from  
GPS location 5053 (Frames 1907-1908;  
09/02/15).**





**Photo 225. View of Surface Water: Excavated Creek in Wetland as seen looking south from GPS location 5076 (Frame 1909; 09/02/15).**





**Photo 226. View of Surface Water: Excavated Creek in Wetland as seen looking north from GPS location 5076 (Frame 1910; 09/02/15).**





**Photo 227. View of Mesic: Mixed Oak-Hardwoods-Successional as seen looking northwest from GPS location 5105 (Frames 1911-1912; 09/02/15).**



**Photo 228. View of Mesic: Mixed Oak-Hardwoods-Successional as seen looking east from GPS location 5124 (Frames 1913-1914; 09/02/15).**





**Photo 229. View of Wetland: Planted Pine-Mixed Hardwoods as seen looking southeast from GPS location 5138 (Frame 1915-1916; 09/02/15).**



**Photo 230. View of Hydric: Planted Pine Flatwoods as seen looking southeast from GPS location 5158 (Frames 1917-1918; 09/02/15).**





**Photo 231. View of Mesic: Pine Flatwoods as seen looking northeast from GPS location 5164 (Frames 1919-1920; 09/02/15).**



**Photo 232. View of Wetlands: Mixed Hardwood Swamp-Bays-Fetterbush as seen looking north from GPS location 5170 (Frames 1921-1922; 09/02/15).**





**Photo 233. View of Wetland: Natural Flow-way as seen looking northeast from GPS location 5176 (Frames 1923-1924; 09/02/15).**



**Photo 234. View of Planted Pine-Mesic Pine Flatwoods as seen looking northeast from GPS location 5189 (Frames 1925-1926; 09/02/15).**





**Photo 235. View of Physical Feature: Culvert located on east side of road as seen looking north from GPS location 5199 (Frame 1927; 09/02/15).**

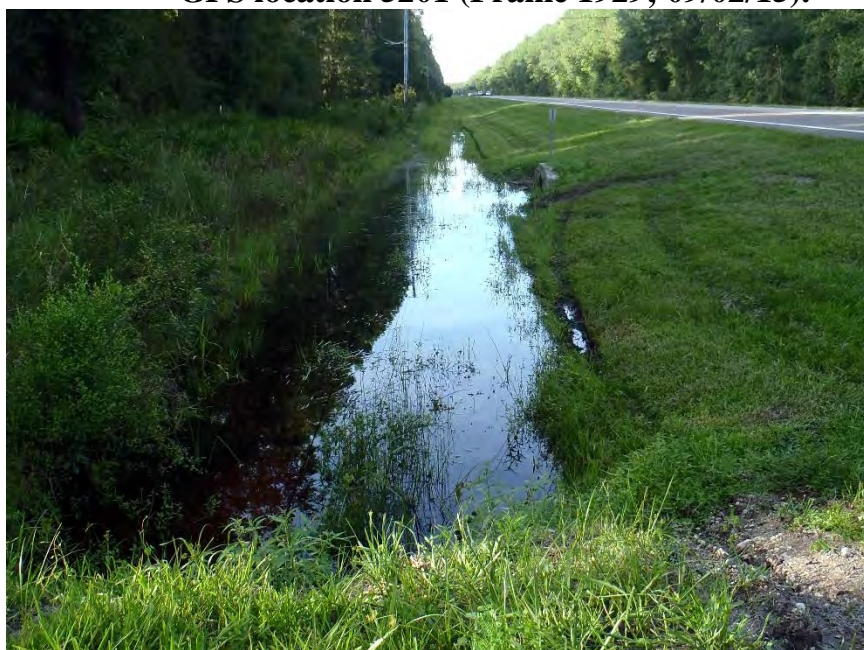


**Photo 236. View of Physical Feature: Culvert located on east side of road as seen looking north from GPS location 5200 (Frame 1928; 09/02/15).**





**Photo 237. View of Physical Feature: Culvert located on west side of road as seen looking north from GPS location 5201 (Frame 1929; 09/02/15).**



**Photo 238. View of Physical Feature: Culvert located on west side of road as seen looking north from GPS location 5202 (Frame 1930; 09/02/15).**





**Photo 239. View of Physical Feature: Culvert located on east side of road as seen looking north from GPS location 5203 (Frame 1931; 09/02/15).**



**Photo 240. View of Mesic: Planted Pine-Mesic Pine Flatwoods as seen looking east from GPS location 5210 (Frames 1932-1933; 09/02/15).**





**Photo 241. View of Wetland: Mixed Hardwood Swamp as seen looking west from GPS location 5239 (Frames 1934-1935; 09/03/15).**



**Photo 242. View of Wetland: Mixed Hardwood Swamp as seen looking east from GPS location 5256 (Frames 1936-1937; 09/03/15).**





**Photo 243. View of Wetland: Planted Pine-Mixed Hardwoods as seen looking southwest from GPS location 5259 (Frames 1938-1939; 09/03/15).**



**Photo 244. View of Planted Pine-Mesic Pine Flatwoods as seen looking east from GPS location 5286 (Frames 1940-1941; 09/03/15).**





**Photo 245. View of Planted Pine-Mesic Pine Flatwoods as seen looking north from GPS location 5297 (Frames 1942-1943; 09/03/15).**



**Photo 246. View of Wetland: Mixed Shrubs & Vines as seen looking east from GPS location 5301 (Frames 1944-1945; 9/03/15).**





**Photo 247. View of Planted Pine-Mesic Pine Flatwoods as seen looking southwest from GPS location 5319 (Frames 1946-1947; 09/03/15).**



**Photo 248. View of Hydric: Mixed Oak-Hardwoods-Successional as seen looking east from GPS location 5324 (Frames 1948-1949; 09/03/15).**





**Photo 249. View of Surface Water: Excavated Ditch within Upland as seen looking north from GPS location 5332 (Frames 1950-1951; 09/03/15).**



**Photo 250. View of Surface Water: Excavated Ditch within Upland as seen looking east from GPS location 5332 (Frame 1952; 09/03/15).**





**Photo 251. View of Surface Water: Excavated Ditch within Upland as seen looking west from GPS location 5332 (Frame 1953; 09/03/15).**





**Photo 252. View of Wetland: Mixed Shrubs & Vines as seen looking east from GPS location 5342 (Frames 1954-1955; 09/03/15).**



**Photo 253. View of Mesic: Mixed Shrubs & Vines as seen looking north from GPS location 5345 (Frames 1956-1957; 09/03/15).**





**Photo 254. View of Wetland: Mixed Hardwood Swamp as seen looking northeast from GPS location 5364. Wetland was historically excavated (Frames 1958-1959; 09/03/15).**



**Photo 255. View of Hydric: Planted Pine Flatwoods as seen looking southwest from GPS location 5364 (Frames 1960-1961; 09/03/15).**





**Photo 256. View of Hydric: Planted Pine Flatwoods as seen looking north from GPS location 5397 (Frames 1962-1963; 09/03/15).**



**Photo 257. View of Wetland: Mixed Hardwoods-Fetterbush as seen looking north from GPS location 5405 (Frames 1964-1965; 09/03/15).**





**Photo 258. View of Planted Pine-Mesic Pine Flatwoods as seen looking east from GPS location 5436 (Frames 1966-1967; 09/03/15).**



**Photo 259. View of Mesic: Planted Pine-Mesic Pine Flatwoods as seen looking north from GPS location 5498 (Frames 1969-1970; 09/04/15).**





**Photo 260. View of Wetlands: Mixed Hardwood Swamp-Bays-Fetterbush as seen looking west from GPS location 5518 (Frames 1971-1972; 09/04/15).**



**Photo 261. View of Wetland: Planted Pine-Marsh as seen looking west from GPS location 5545 (Frames 1973-1974; 09/04/15).**





**Photo 262. View of Mesic: Planted Pine-Mesic Pine Flatwoods as seen looking northwest from GPS location 5560 (Frames 1975-1976; 09/04/15).**



**Photo 263. View of Wetland: Planted Pine-Marsh as seen looking west from GPS location 5571 (Frames 1971-1978; 09/04/15).**





**Photo 264. View of Wetlands: Mixed Hardwood Swamp-Bays-Fetterbush as seen looking southwest from GPS location 5580 (Frames 1979-1980; 09/04/15).**



**Photo 265. View of Wetland: Natural Flow-way as seen looking east from GPS location 5602 (Frames 1981-1983; 09/04/15).**





**Photo 266. View of Wetland: Planted Pine-Marsh as seen looking north from GPS location 5615 (Frames 1984-1985; 09/04/15).**



**Photo 267. View of Wetland: Planted Pine-Marsh as seen looking north from GPS location 5633 (Frames 1986-1987; 09/04/15).**





**Photo 268. View of Physical Feature Boundary: Wetland Delineation Flagging within Hydric: Planted Pine Flatwoods as seen looking southeast from GPS location 5655 (Frames 1988-1989; 09/04/15).**



**Photo 269. View of Physical Feature Boundary: Wetland Delineation Flagging within Hydric: Planted Pine Flatwoods as seen looking northwest from GPS location 5655 (Frames 1990-1991; 09/04/15).**





**Photo 270. View of Wetlands: Mixed Hardwood Swamp-Bays-Fetterbush as seen looking southwest from GPS location 5679 (Frames 1992-1993; 09/04/15).**



**Photo 271. View of Wetlands: Mixed Hardwood Swamp-Bays-Fetterbush as seen looking northeast from GPS location 5706 (Frames 1994-1995; 09/04/15).**





**Photo 272. View of Hydric: Planted Pine Flatwoods as seen looking southeast from GPS location 5712 (Frames 1996-1997; 09/04/15).**



**Photo 273. View of Wetland: Natural Flow-way as seen looking west from GPS location 5743 (Frame 1998; 09/04/15).**





**Photo 274. View of Wetland: Natural Flow-way as seen looking east from GPS location 5743 (Frame 1999; 09/04/15).**



**Photo 275. View of Hydric: Planted Pine Flatwoods as seen looking north from GPS location 5763 (Frames 2000-2001; 09/04/15).**





**Photo 276. View of Mesic: Planted Pine-Mesic Pine Flatwoods as seen looking southwest from GPS location 5773 (Frames 2002-2003; 09/04/15).**



**Photo 277. View of Wetland: Planted Pine-Marsh as seen looking west from GPS location 5791 (Frames 2004-2005; 09/04/15).**





**Photo 278. View of Wetland: Planted Pine-Marsh as seen looking west from GPS location 5794 (Frames 2006-2007; 09/04/15).**



**Photo 279. View of Wetlands: Mixed Hardwood Swamp-Bays-Fetterbush as seen looking west from GPS location 5814 (Frames 2008-2009; 09/04/15).**





**Photo 280. View of Wetlands: Mixed Hardwood Swamp-Bays-Fetterbush as seen looking northwest from GPS location 5814 (Frames 2010-2011; 09/04/15).**



**Photo 281. View of Hydric: Planted Pine Flatwoods as seen looking north from GPS location 5835 (Frames 2012-2013; 09/04/15).**